

# Vision *Angus*



*23rd Annual Sale*  
**MARCH 1, 2021**

2:00 PM CST | NORTH PLATTE, NE | LINCOLN COUNTY FAIRGROUNDS  
**SELLING 58 BULLS & 20 HEIFERS**

*See the Quality. Experience the Value.*





## Vision Angus

36996 County Road 53 | Amherst, CO 80721

Home: 970.854.4322

Cells: 970.520.9006 or 9012

Email: [visionangus@pctelcom.coop](mailto:visionangus@pctelcom.coop)

Website: [www.visionangus.com](http://www.visionangus.com)

## Your personal invitation

FROM THE VIESELMAYER FAMILY OF VISION ANGUS

AUSTIN, TINA, BRENT & ALEX VIESELMAYER (AS PICTURED)

Excitement was the word that described every day this past year. I think most of us were just excited to see the sun come up in the morning and get one day further through 2020.

Excitement keeps a lot of us going in agriculture. We are excited for a growing season, a new calf crop, and hopefully a new operating loan. Many of us market our products largely in one day or a few days. Feeder cattle sell in one or two days, grains we sell in rallies or when it hits the elevator and fed cattle go in one to several truck loads which amounts to a big chunk of money. The Vision Angus family is no exception. This bull sale day excitement causes premature aging more and more each year.

When it comes to selling cattle or beef, we tend to have excitement for someone to share in the fruits of our labors. We want those calves to look good and command a good price. Down deep we also want them to do well for the buyer and maybe they will come back next year. In the livestock industry, we have a stronger bond than other segments in agriculture. There is just something about livestock and the trials and tribulations we go through that bonds us. It's a good thing, we are glad our children were raised in it and have that bond with other livestock folks.

We are definitely excited to bring you this set of bulls and heifers we are selling Monday, March 1st. They are the result of our years of labor, thoughts, and planning. These cattle are also the result of your input. That may be the most important influence of the cattle we are selling. They were designed for your success. So consequently, our excitement is from the opportunity of these seedstock to have a good profitable impact on your operation.

We have older and wiser children thus we are going to step up our game and offer services to our customers. Please look at those on the adjacent page. It is time we all create a new Vision for our cowherds and move up our game of beef production. Thank you for considering our sale offering. We look forward to visiting with each of you.

Sincerely,

*Brent & Tina Vieselmeier*

Vision Angus

**This sale will be broadcast live on the internet.**

# DVAuction

**Broadcasting Real-Time Auctions**

**Real time bidding & proxy bidding available.**

**VIDEOS OF ALL LOTS WILL BE POSTED ONLINE**  
REGISTER 24 HOURS PRIOR TO SALE TIME TO BID ONLINE

**WWW.DVAUCTION.COM**

FOR GENERAL QUESTIONS PLEASE CONTACT OUR OFFICE:

**402.316.5460**

**SUPPORT@DVAUCTION.COM**



# CREATE A **Vision** FOR YOUR COW HERD



**Raise Quality Cattle – You can count on Vision Angus to be your seedstock supplier of choice with a ‘Quality’ cow herd based on balanced-trait selection.**

Growthy, thick ended, fancy calves still command top dollar at the sale barn and on video. Your reputation is as important as how the calves look. Capture the premium available from having the right reputation, quality and information. Don’t just have “Commodity Cattle”. At Vision Angus, we know those calves need to have that eye appeal, growth and thickness. We offer bulls that will provide these phenotypic traits and help you “get noticed”. We also know that maternal traits and cow longevity have the largest impact on your profitability. EPD’s cannot measure every trait.



**Develop A Herd Health Plan – You can count on Vision Angus to help you develop a plan with our access to experts and knowledge of the products.**

Use your veterinarian but just don’t go to the clinic the day before you work calves and get the vaccine they tell you to get. There are new vaccines available and there are systems to create immunization compliments. Review the vaccine protocols of the video and sale barn programs available to you as sellers. The most important thing is to develop a plan and take advantage of the value in your feeder calves by having them properly vaccinated. The data derived from over 25 million head of cattle sold on Superior Livestock is astounding. Calves weaned and on a vaccination program are commanding higher prices.



**Provide The Right Nutrition – You can count on Vision Angus to check and balance your rations with over 30 years of ruminant nutrition training and experience**

Take advantage of University information on nutrition and management. Subscribe to <https://beef.unl.edu/beefwatch>. Nebraska beef producers have an amazing and talented extension and research system at University of Nebraska. The science of proper nutrition can help you take advantage of the ‘Quality’ genetics you have selected for your herd.



**Take Advantage Of Technology – You can count on Vision Angus to provide the guidance and tools to help you utilize these genomic programs.**

Most of us are also farmers. We use technology in agronomy extensively – seed traits, chemistries and biologicals to name a few. We have to count on the science and the data to tell us that the technology will benefit us. We need to start utilizing the genomic science available to us in beef cattle. Quantify your herd genetically with respect to maternal, growth and carcass traits. Take advantage of the programs available through American Angus Association to make decisions when selecting replacement heifers and marketing feeder cattle. We have been genomic testing our herd since 2013 (eight years) to help us make decisions and help you select the right seedstock.



**Market Your Calves With Information – You can count on Vision Angus to help you capitalize on every opportunity to market your cattle with more information with our many industry contacts.**

Take advantage of the programs available such as Angus Link, Top Dollar Angus, NHTC, vaccine programs and genomic testing to name a few. There are a wide variety of programs and opportunities. Many of these will help you acquire data and information on your feeders to help you improve your genetics, management and marketing.

*Experience the Value.*





# 23RD ANNUAL SALE MONDAY, MARCH 1, 2021

2:00 PM CST | NORTH PLATTE, NE | LINCOLN COUNTY FAIRGROUNDS

## Vision Angus

36996 County Road 53 | Amherst, CO 80721

Home: 970.854.4322 | Cells: 970.520.9006 or 9012 | Email: [visionangus@pctelcom.coop](mailto:visionangus@pctelcom.coop) | Website: [www.visionangus.com](http://www.visionangus.com)



*Join us for complimentary lunch on sale day!*

12:00 - 2:00 PM | PROVIDED BY HAPPY JACKS BARBEQUE | ALLYN ROBINSON | HOLYOKE, CO

### Sale Day Location

Lincoln County Fairgrounds | 5015 Rodeo Rd. | North Platte, NE 69101  
The fairgrounds are located three miles west of Highway 30 & 83 junction in North Platte on Highway 30.

### Sale Day & Cellular Phones

Lincoln County Fairgrounds.....	308.532.1204
Tina.....	970.520.9012
Brent.....	970.520.9006
Austin.....	970.520.9060

### Auctioneer

Matt Lowery.....	308.750.6119
------------------	--------------

### Sale Day Staff

Randy Rasby, Livestock Plus, Inc.....	308.539.6195
Bobby Strecker, Special Assignment .....	540.462.7912
Nate Smith, General Manager, Top Dollar Angus .....	620.546.4839
Ryan Large, Sales Representative, DVAuction .....	308.340.9859
Levi Landers, American Angus Association .....	308.730.1396
Alan Sears, Western Ag Reporter .....	970.369.7521
Jake Wagner, Nutrition Specialist, Suther Feeds, Inc. ....	720.291.5002

### DVAuction

If you are unable to join us on sale day, the auction will be broadcast on DVAuction. Watch and bid online by registering at [www.DVAuction.com](http://www.DVAuction.com) prior to sale day to obtain buyer approval. A high speed internet connection is required for viewing and bidding. For questions regarding preregistration, bidding and/or the broadcast, please contact DVAuction at 402.316.5460 Or [support@dvauction.com](mailto:support@dvauction.com)

### Photos/Videos

All lot photos and videos were taken by Brent Vieselmeyer and edited by Kaylee Tracy, Tracy Cattle Co., Wellfleet, NE. View the videos at [www.DVAuction.com](http://www.DVAuction.com) or access the link from our website at [www.visionangus.com](http://www.visionangus.com).

### Sale Ring

All lots will sell through the Sale Ring for the buyers' convenience. DVAuction will also display the individual lot video as the cattle are selling.

### Bulls Are Properly Developed For Your Benefit!

Bull nutrition and development has been conducted with the assistance from the professionals at Suther Feeds, Inc. Our nutrition and herd health have been designed to ensure the longevity of the bulls. The disposition of the bulls reflects the way they have been developed.





### Fertility Exam And Herd Health

Breeding soundness evaluations and heifer pelvic measurements were performed by Dr. Jeffrey Tharp, Holyoke Veterinary Service at Holyoke, CO 970-854-3800. Bulls are guaranteed breeders and sell with an individual fertility exam certificate. They have all been semen checked prior to the sale. All lots have been vaccinated for IBR, PI3, BVD, 7-way, BRSV and Haemophilus and have been poured and injected with Decctomax. All bulls have been administered Vitamin E and wart vaccine. Heifers have been vaccinated with Bovi-Shield Gold FP5 VL5. All lots tested negative for PI BVD and are AM, NH, CA, DD and M1 free by test or pedigree.

### Performance, Ultrasound And Fertility Data

EPDs printed in this catalog are as of February 5, 2021. EPD adjustments based upon submission of ultrasound scans and scrotal measurements will be reflected on an updated Supplement Sheet. A Supplement Sheet will provide updated EPDs, scrotal and heifer pelvic area. If you would like information prior to the sale, please give us a call or go to [www.visionangus.com](http://www.visionangus.com) or [www.facebook.com/visionangus](http://www.facebook.com/visionangus) or Brent Vieselmeyer for updates. All lots with the HD50K logo have been parent verified and sell with genomically enhanced EPDs.

### Unconditional Sight-Unseen Purchase Guarantee

Buyers unable to attend the sale may call and give their bids to Brent, Tina, Austin or any of the sale day staff. We guarantee complete honesty and integrity in how your bids will be handled. We also guarantee complete satisfaction for bulls or heifers purchased in this manner. You don't like the bull or heifer upon possession – you don't own him/her! It's That Simple!

### Unconditional First Breeding Season Guarantee

Bulls are guaranteed for 90 days from the first turnout against breeding injury. Credit for the amount of purchase price minus \$1,750 will be applied toward the purchase of another bull in next year's sale if a replacement bull is not available. Buyer should notify Vision Angus as soon as possible should injury occur and prior to the injured bull being sold for salvage. We ask that all claims for credit be made known prior to September 1, 2021. This is not a mortality insurance policy nor does it cover mismanagement or neglect. Our heifers also sell with a first season breeding guarantee.

### Repeat Buyer Discount

We appreciate the loyalty of our repeat buyers and offer the following discounts on your purchases: The discount increases 1% for each consecutive year of purchase with a maximum of 5% discount. 2nd Consecutive Year of Purchase: 2% Discount | 3rd Consecutive Year of Purchase: 3% Discount | 4th Consecutive Year of Purchase: 4% Discount | 5th or more Consecutive Years of Purchase: 5% Discount.

### Volume Discount

Purchase 3 or more bulls and enjoy a 5% discount on purchases!

### Trucking Discount

Receive \$100 off each bull taken home sale day!

### Free Delivery

Free delivery on all bull purchases in Nebraska and surrounding states. Delivery to a central location will apply to all other states. We would prefer that all heifers are taken home sale day or Tuesday, March 2nd.

### Free Wintering & Feed

We'll winter your bull(s) free until delivered. Visit with Brent, Tina or Austin after the sale if you have special requests regarding your bull delivery.



### Top Dollar Angus Seedstock Partner

We're excited to be a Seedstock Partner for Top Dollar Angus to assist you in adding value to your calf crop! Our Top Dollar Angus qualified sires are identified with the logo. Their progeny will qualify as high-end genetic feeder cattle giving you the opportunity to capture market premiums that

ranged from \$30 to \$70 per head above the average market. Top Dollar Angus contacts more than 200 feedyards and order buyers to help drive demand and bring a higher return on your investment in the Top Dollar Angus qualified genetics.



### Targeting the Brand™

The Targeting the Brand™ logo is designed to highlight registered Angus bulls and heifers with greater genetic potential to produce calves meeting the most challenging specifications of the Certified Angus Beef® brand. Bulls and heifers must meet genetic requirements of +0.65 Marbling EPD and

+55 \$ Grid to qualify for use of the Targeting the Brand™ logo.

### Inspection Of The Cattle

Cattle may be viewed at the ranch located 1 mile north of Amherst, CO on County Road 53 OR at the Lincoln County Fairgrounds, North Platte, NE beginning Saturday afternoon February 27th.

### Terms And Conditions & Announcements

Bulls and heifers sell under the standard terms and conditions of the American Angus Association. Announcements made sale day take precedence over printed material in this catalog.

### Retained Interest

Vision Angus will retain 1/3 semen revenue sharing interest in all of the bulls in this sale. The buyer has full possession and salvage value of the bull at the end of his useful life. All announcements made from the auction block sale day take precedence over printed information in the catalog.

### All EPDs Are As Of Friday, February 5, 2021

A supplement sheet with the most current EPDs and information will be available prior to sale day.





# AMERICAN ANGUS ASSOCIATION SELECTION TOOLS

We're committed to "Driving the science of better breeding" by providing you with the American Angus Association selection tools but we're doing so with more reliability and predictability through genomically enhanced EPDs.

## Calving Ease Direct (CED)

is expressed as a difference in percentage of unassisted births, with a higher value indicating greater calving ease in first-calf heifers. It predicts the average difference in ease with which a sire's calves will be born when he is bred to first-calf heifers.

## Birth Weight EPD (BW)

expressed in pounds, is a predictor of a sire's ability to transmit birth weight to his progeny compared to that of other sires.

## Weaning Weight EPD (WW)

expressed in pounds, is a predictor of a sire's ability to transmit weaning growth to his progeny compared to that of other sires. For example, you can expect progeny from a sire with a 60 WW EPD to weigh 20 lbs heavier on average at weaning than progeny from a sire with a 40 WW EPD.

## Yearling Weight EPD (YW)

expressed in pounds, is a predictor of a sire's ability to transmit yearling growth to his progeny compared to that of other sires.

## Scrotal Circumference EPD (SC)

expressed in centimeters, is a predictor of the difference in transmitting ability for scrotal size compared to that of other sires.

## Docility (DOC)

expressed as a difference in yearling cattle temperament, with a higher value indicating more favorable docility. It predicts the average difference of progeny from a sire in comparison with another sire's calves. In herds where temperament problems are not an issue, this expected difference would not be realized.

## Heifer Pregnancy (HP)

is a selection tool to increase the probability or chance of a sire's daughters becoming pregnant as first-calf heifers during a normal breeding season. A higher EPD is the more favorable direction and the EPD is reported in percentage units.

## Maternal Milk EPD (Milk)

is a predictor of a sire's genetic merit for milk and mothering ability as expressed in his daughters as compared to daughters of other sires. In other words, it is that part of a calf's weaning weight attributed to milk and mothering ability.

## Carcass Weight EPD (CW)

expressed in pounds, is a predictor of the difference in hot carcass weight of a sire's progeny compared to progeny of other sires.

## Marbling EPD (Marb)

expressed as a fraction of the difference in USDA marbling score of a sire's progeny compared to progeny of other sires.

## Ribeye Area EPD (RE)

expressed in square inches, is a predictor of the difference in ribeye area of a sire's progeny compared to progeny of other sires.

## Maternal Weaned Calf Value (\$M)

an index, expressed in dollars per head, predicts profitability differences from conception to weaning with the underlying breeding objective assuming that individuals retain their own replacement females within herd and sell the rest of the cull female and all male progeny as feeder calves. The model assumes commercial producers will replace 25% of their breeding females in the first generation and 20% of their breeding females in each subsequent generation. Traits included are as follows: calving ease direct, calving ease maternal, weaning weight, milk, heifer pregnancy, docility, mature cow weight, claw set and foot angle.

## Weaned Calf Value (\$W)

an index value expressed in dollars per head, is the expected average difference in future progeny performance for preweaning merit. \$W includes both revenue and cost adjustments associated with differences in birth weight, weaning direct growth, maternal milk and mature cow size.

## Feedlot Value (\$F)

an index value expressed in dollars per head, is the expected average difference in future progeny performance for postweaning merit compared to progeny of other sires.

## Grid Value (\$G)

an index value expressed in dollars per head, is the expected average difference in future progeny performance for carcass grid merit compared to progeny of other sires.

## Beef Value (\$B)

an index value expressed in dollars per head, is the expected average difference in future progeny performance for postweaning and carcass value compared to progeny of other sires.

## Combined Value (\$C)

an index, expressed in dollars per head, which includes all traits that make up both Maternal Weaned Calf Value (\$M) and Beef Value (\$B) with the objective that commercial producers will replace 20% of their breeding females per year with replacement heifers retained within their own herd. The remaining cull heifer and steer progeny are then assumed to be sent to the feedlot where the producers retain ownership of those cattle and sell them on a quality-based carcass merit grid. Expected progeny differences (EPDs) directly influencing a combined index: calving ease direct (CED) and maternal (CEM), weaning weight (WW), yearling weight (YW), maternal milk (Milk), heifer pregnancy (HP), docility (DOC), mature cow weight (MW), foot angle (Angle), claw set (Claw), dry matter intake (DMI), marbling (Marb), carcass weight (CW), ribeye area (RE) and fat thickness (Fat).



All lots with the above designation offer you  
**TWO IMPORTANT ADVANTAGES:**

#1

They have been parent verified to ensure pedigree accuracy. You can place 100% confidence that the genetics you're purchasing are accurately represented.

#2

Genomic test results have already been factored into their individual EPDs providing you with higher accuracy EPDs that are the equivalent of that individual already having produced and recorded 8-33 calves depending on the trait measured. For commercial and seedstock producers that's valuable insight for more accurate selection, easier identification of genetic outliers and more reliability and predictability for genetic progress.

The following table provides you the progeny equivalent for some of the traits measured through genomic testing resulting in higher accuracy EPDs.

Trait	Progeny Equivalent	Trait	Progeny Equivalent
Calving Ease Direct (CED)	28	Milk	33
Birth Weight (BW)	21	Calving Ease Maternal (CEM)	18
Weaning Weight (WW)	26	Carcass Weight (CW)	9
Yearling Weight (YW)	21	Carcass Marbling (MARB)	9
Scrotal Circumference (SC)	13	Carcass Ribeye (REA)	12

## AMERICAN BREED AVERAGE FOR NON-PARENT BULLS:

CED	BW	WW	YW	Milk	SC	DOC	HP	CW	Marb	RE	\$M	\$W	\$F	\$G	\$B	\$C
6	1.2	57	100	25	.78	17	11.2	42	.56	.57	58	56	81	46	130	225

## AMERICAN BREED AVERAGE FOR NON-PARENT COWS:

CED	BW	WW	YW	Milk	SC	DOC	HP	CW	Marb	RE	\$M	\$W	\$F	\$G	\$B	\$C
6	1.3	56	99	25	.75	17	11.0	43	.61	.59	59	58	81	47	131	226

## ANGUS BREED AVERAGE FOR CURRENT SIRES:

CED	BW	WW	YW	Milk	SC	DOC	HP	CW	Marb	RE	\$M	\$W	\$F	\$G	\$B	\$C
6	1.2	56	99	14	.78	16	10.7	40	.51	.53	54	56	82	44	127	219





## BALANCE IS THE KEY TO SUCCESS

*M*ost of us are developing our own replacement females and selling feeder cattle after we feed them our home raised forages.

We are asking the Angus bulls we buy to "do it all". With proper genetic selection, they can do it all, from calving-ease predictability to sale day pounds to carcass merit to maternal function.

Beware of marketing schemes that want you to select bulls that are extreme in their EPD's, from a rare "limited semen" sire or have extreme phenotype. Breeding for balance and predictability is the most difficult task that seedstock breeders can achieve yet they are the most economically important to commercial cattlemen.

Keep your herd in balance with Vision Angus genetics! Tipping the scale in one direction will sacrifice traits in the other direction. Our approach to breeding cattle will always be to balance selection traits important to our customers without chasing extremes or fads. Our success and our customers' success hinges on the balance of real-world production traits.





**Poss Maverick**

DOB: 2/5/17 | TATTOO: 764 | REG. 18962396

In our search for an attractive, high performance sire with added thickness and body dimension, Maverick surfaced to the top of our short list without sacrificing moderate birth, scrotal circumference, milk and marbling potential. Maverick progeny have exceeded our expectations. These Maverick sons are stout, big bodied, thick-ended and athletic while his daughters are feminine and easy keepin' with an early brood cow look to them. Individual data, genomics and ultrasound scans confirm, these Maverick sons have the bred-in ability to add value to every segment of the industry. Maverick ranks in the Top 25% WW, 25% YW, 15% SC, 15% Milk, 30% Doc, 15% \$W, 10% \$F, 1% \$G, 1% \$B and 2% \$C.

Basin Payweight 006S #  
**Basin Payweight 1682 #**  
 21AR O Lass 7017

Poss Hoover Dam 2509  
**Poss Pride 5163**  
 Poss Pride 9526

Vermilion Payweight J847 #  
 Basin Lucy 3829  
 HARB Pendleton 765 J H #  
 21AR O Lass F24A

Hoover Dam #  
 Poss Erica 793  
 G A R Predestined #  
 Baldrige Pride R600

**REFERENCE SIRE**

CED	BW	WW	YW	MILK	SC	DOC	HP	CW	MARB	RE	\$M	\$W	\$F	\$G	\$B	\$C
5	.9	66	117	32	1.48	21	9.5	57	1.52	.58	49	74	106	91	197	305

*Lot 1***LOTS1-2**

Basin Payweight 1682 #  
**Poss Maverick**  
 Poss Pride 5163  
 Koupal Advance 28 #  
**Vision Evergreen 610**  
 Vision Evergreen 407

Basin Payweight 006S #  
 21AR O Lass 7017  
 Poss Hoover Dam 2509  
 Poss Pride 9526  
 Koupal Juneau 797 #  
 Koupal Ebonette 734  
 S A V Bismarck 5682 #  
 Vision Evergreen 202

**LOT 1 - Vision Maverick 0033**

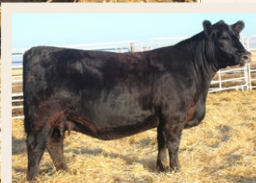
DOB: 1/20/20 | TATTOO: 0033 | REG. 19858298

CED	BW	WW	YW	MILK	CW	MARB	REA	\$M	\$W	\$F	\$G	\$B	\$C
9	1.0	73	128	23	49	0.99	0.59	57	74	91	67	158	262
BW	ADJ. WW	ADJ. YW	FAT	ADJ. IMF	ADJ. REA								
90	853	1,607	0.44	3.8	13.1								

**LOT 2 - Vision Maverick 0023**

DOB: 1/15/20 | TATTOO: 0023 | REG. 19858294

CED	BW	WW	YW	MILK	CW	MARB	REA	\$M	\$W	\$F	\$G	\$B	\$C
-1	3.3	79	138	28	55	0.83	0.78	36	75	100	63	163	247
BW	ADJ. WW	ADJ. YW	FAT	ADJ. IMF	ADJ. REA								
92	810	1,546	0.61	4.6	14.9								

*Lot 2*

**VISION EVERGREEN 610**  
 DONOR DAM OF LOTS1-2

You'll never regret adding bulls of this caliber to your breeding program. They're an investment that will pay dividends for years to come. You decide which one is your favorite and best suited to the needs of your cow herd and program. You can be assured that their dam – Vision Evergreen 610 – is the kind of cow power and genetics you want behind your next herd sire! For two consecutive years her sons lead off our annual sale. She is our most valued female that captivates the attention of all ranch visitors. Her dam and grandam are equally impressive to all that have seen them and highly productive making our short list of Vision Angus favorites. That is truly a testament to the maternal strength and cow power of our Evergreen cow family – the backbone of our program.

Lot 1 is definitely in a league of his own. He's so powerful, thick-ended, big bodied and yet when you step back his design is second to none with exceptional length and phenotype that many will admire! His EPDs rank in the Top 10% WW, 10% YW, 25% SC, 10% Marb, 15% \$W, 25% \$F, 10% \$G, 15% \$B and 15% \$C.

Lot 2 is a true performance bull with worlds of substance, three-dimensional mass, fleshing ability and natural thickness. His EPDs rank in the Top 4% WW, 5% YW, 15% SC, 20% CW, 20% Marb, 20% RE, 15% \$W, 15% \$G, 10% \$B and 30% \$C.



### LOT 3 - Vision Maverick 0009

DOB: 1/11/20 | TATTOO: 0009 | REG. 19858415

Basin Payweight 1682 #

Poss Maverick

Poss Pride 5163

Connealy Consensus 7229 #

SandPoint Pride 1359

SandPoint Pride 4196

Basin Payweight 006S #

21AR O Lass 7017

Poss Hoover Dam 2509

Poss Pride 9526

Connealy Consensus #

Blue Lilly of Conanga 16

B/R New Design 036 #

Baldrige Pride L826

CED	BW	WW	YW	MILK	CW	MARB	REA	\$M	\$W	\$F	\$G	\$B	\$C
2	2.1	80	136	32	63	1.38	0.45	61	89	98	86	184	300

BW	ADJ. WW	ADJ. YW	FAT	ADJ. IMF	ADJ. REA
79	791	1,479	0.44	7.11	14



A performance and carcass-improving standout since birth that will deliver genetic rewards at every stage of production. He's an ELITE individual that knocked everything out of the park recording individual ratios of birth 94, weaning 115, yearling 112 and a remarkable IMF 204. His Consensus 7229 dam reinforces his strong carcass value with progeny ratios of IMF 2@156 and RE 2@101 while his maternal sister records progeny ratios of IMF 2@133 and RE 2@103. And yet - he's definitely a balanced trait bull - growthy, attractive, muscular, sound structured and infused with end-product value and maternal function. He's a serious contender for cattlemen that retain ownership or finish their cattle to harvest with EPDs in the Top 3% WW, 5% YW, 10% Milk, 25% Doc, 10% CW, 2% Marb, 15% Fat, 2% \$W, 15% \$F, 1% \$G, 2% \$B and 2% \$C.

## Lot 4

### LOT 4 - Vision Maverick 0035

DOB: 1/24/20 | TATTOO: 0035 | REG. 19858400

Basin Payweight 1682 #

Poss Maverick

Poss Pride 5163

S A V 004 Density 4336 #

Vision Evergreen 202

ALC Evergreen C29R #

Basin Payweight 006S #

21AR O Lass 7017

Poss Hoover Dam 2509

Poss Pride 9526

S A V 8180 Traveler 004 #

S A V May 7238

K C F Bennett Coalition SCC #

Roth Miss Traveler 2095

CED	BW	WW	YW	MILK	CW	MARB	REA	\$M	\$W	\$F	\$G	\$B	\$C
-4	5.1	71	121	21	57	0.94	0.57	56	56	105	64	169	275

BW	ADJ. WW	ADJ. YW	FAT	ADJ. IMF	ADJ. REA
96	736	1,422	0.4	4.81	15.2



Expect more growth, gain-ability and end-product value in this heavy structured, high performance Maverick son from the same powerful Evergreen cow family that produced Lots 1 & 2. He'll deliver the extra pounds you may be looking for in a set of calves that will have the ability to gain and grade. You'll appreciate his individual ratios of 107 weaning, 107 yearling, 138 IMF and 108 ribeye and EPDs ranking in the Top 15% WW, 20% YW, 5% Claw, 1% Angle, 15% CW, 15% Marb, 10% \$F, 15% \$G, 10% \$B and 10% \$C. His Density dam earned a progeny record of WR 6@100, IMF 3@119, RE 3@102 and Fat 3@88 while his Pathfinder grandam - our foundation Evergreen - boasted an impressive record of WR 7@103, YR 6@102, IMF 18@103, RE 18@102 and Fat 18@109.

VISION EVERGREEN 202  
DAM OF LOT 4



### LOT 5 - Vision Maverick 0017

DOB: 1/13/20 | TATTOO: 0017 | REG. 19858337

Basin Payweight 1682 #

Poss Maverick

Poss Pride 5163

Barstow Cash #

Vision Forever Lady 458

Top Line Lady 9114

Basin Payweight 006S #

21AR O Lass 7017

Poss Hoover Dam 2509

Poss Pride 9526

Sitz Dash 10277 #

Barstow Queen W16

S A V Bismarck 5682 #

OBAR Gambles Lady 1056

CED	BW	WW	YW	MILK	CW	MARB	REA	\$M	\$W	\$F	\$G	\$B	\$C
3	2.1	84	157	30	83	0.81	0.77	51	85	140	60	200	310

BW	ADJ. WW	ADJ. YW	FAT	ADJ. IMF	ADJ. REA
94	730	1,397	0.3	2.38	12.9



Attention cattle feeders - Everything came together here to make this Maverick son a highly-valued addition to any program. Lot 5 will sire value-added feeder cattle with an impressive look, gain-ability and improved carcass genetics! He's genetically engineered to produce pounds. His actual performance and genomics were highly correlated resulting in breed leading EPDs ranking in the Top 2% WW, 1% YW, 15% SC, 20% Milk, 1% CW, 25% Marb, 20% RE, 3% \$W, 1% \$F, 20% \$G, 1% \$B and 1% \$C. He's backed by the high performance Lady family with his Barstow Cash dam making a great one every year recording a WR 4@108, YR 3@108, RE 3@104 while his grandam boasts an impressive WR 5@108, YR 5@106 and RE 9@106.

### VISION EDELLA 665

MATERNAL GRANDAM OF LOT 6



### LOT 6 - Vision Maverick 0043

DOB: 1/27/20 | TATTOO: 0043 | REG. 19858265

Basin Payweight 1682 #

Poss Maverick

Poss Pride 5163

S A V Platinum 0010 #

Vision Edella 671

Vision Edella 665 #

Basin Payweight 006S #

21AR O Lass 7017

Poss Hoover Dam 2509

Poss Pride 9526

S A V Pioneer 7301 #

S A V Greystone Jannet 5345 #

Boyd On Target 1083 #

Vision Edella 337

CED	BW	WW	YW	MILK	CW	MARB	REA	\$M	\$W	\$F	\$G	\$B	\$C
-2	3.2	66	112	30	45	0.86	0.30	55	71	86	54	140	237

BW	ADJ. WW	ADJ. YW	FAT	ADJ. IMF	ADJ. REA
85	640	1,219	0.54	4.79	11.3



You can count on this Maverick son to make the right kind of females as well as feeder cattle that will perform in the yard and on the rail. He's backed by a Pathfinder grandam that produced Vision Unanimous 1418 and earned an impressive progeny record of BR 6@97, WR 6@102, YR 5@103, IMF 8@107 and Fat 8@104. As you can see by her mature picture - she's been a model for cow power, longevity and maternal function. His EPDs rank in the Top 25% WW, 30% YW, 20% Milk, 20% Marb and 20% \$W.



**LD Capitalist 316**

DOB: 1/26/13 | TATTOO: 316 | REG. 17666102

LD Capitalist 316 – Proven, Predictable, Profitable and Prominent! Capitalist is siring cattle that are economically valuable, phenotypically attractive, and thick made. He uniquely combines predictable calving-ease with performance and power in a soft, deep ribbed and structurally sound package. Capitalist daughters in production are super easy fleshing with beautiful udders and have earned an average progeny weaning ratio of 103. These Capitalist sons will inject muscle, substance and shape with balanced EPDs and the look we all like. Capitalist ranks in the Top 15% CED, 20% BW, 20% WW, 30% YW, 10% CEM, 30% Milk, 30% Claw, 25% Angle, 15% CW, 10% \$W, 15% \$F, 20% \$B and 20% \$C.

S A V Final Answer 0035 #  
**Connealy Capitalist 028 #**  
 Prides Pita of Conanga 8821  
 C A Future Direction 5321 #  
**LD Dixie Erica 2053**  
 LD Dixie Erica Oar 0853

Sitz Traveler 8180 #  
 S A V Emulous 8145  
 C R A Bextor 872-5205 608 #  
 Prides Trav of Conanga 6499  
 G A R Precision 1680 #  
 C A Miss Power Fix 308  
 LD Royce Onaroll 810  
 Dixie Erica of R R 8553

**REFERENCE SIRE**

CED	BW	WW	YW	MILK	SC	DOC	HP	CW	MARB	REA	\$M	\$W	\$F	\$G	\$B	\$C
11	-0.5	68	115	28	0.47	12	9.6	58	0.62	0.61	61	78	105	47	152	258

*Lot 7***LOT 7 - Vision Capitalist 0030**

DOB: 1/18/20 | TATTOO: 0030 | REG. 19858201

Connealy Capitalist 028 #  
**LD Capitalist 316**  
 LD Dixie Erica 2053  
 Vision Unanimous 1418 #  
**Vision Lady 756**  
 Top Line Lady 9114

S A V Final Answer 0035 #  
 Prides Pita of Conanga 8821  
 C A Future Direction 5321 #  
 LD Dixie Erica Oar 0853  
 Visiontopline Royal Stockman  
 Vision Edella 665 #  
 S A V Bismarck 5682 #  
 OBAR Gambles Lady 1056

CED	BW	WW	YW	MILK	CW	MARB	REA	\$M	\$W	\$F	\$G	\$B	\$C
-3	4.0	84	142	23	62	0.38	0.56	51	78	101	37	139	231

BW	ADJ. WW	ADJ. YW	FAT	ADJ. IMF	ADJ. REA
86	820	1,521	0.54	2.9	14.7



'Captivating!' Unmistakable herd bull presence in this Capitalist son that will take your program and cow herd to new heights! He'll easily find his way on to the short list for cattlemen that demand more quality, eye appeal, muscle and maternal function in their cattle. He's one of the most complete individuals we've had the opportunity to develop and offer up for your appraisal. He's a big footed, athletic, high-performance, thick made individual that's impressively designed from any angle you study him! Backed by our original Lady – Top Line Lady 9114 – a performance powerhouse recording an impeccable progeny record of weaning 4@112, yearling 4@110 and ribeye 8@105.

*Lot 8***LOT 8 - Vision Capitalist 0004**

DOB: 1/7/20 | TATTOO: 0004 | REG. 19858219

Connealy Capitalist 028 #  
**LD Capitalist 316**  
 LD Dixie Erica 2053  
 Vision Unanimous 1418 #  
**Vision Honey Bear 536**  
 WAF Honey Bear 251 #

S A V Final Answer 0035 #  
 Prides Pita of Conanga 8821  
 C A Future Direction 5321 #  
 LD Dixie Erica Oar 0853  
 Visiontopline Royal Stockman  
 Vision Edella 665 #  
 WAF Grid Topper 7110  
 Waf Lass 042

CED	BW	WW	YW	MILK	CW	MARB	REA	\$M	\$W	\$F	\$G	\$B	\$C
7	2.0	77	131	21	70	0.69	0.47	60	71	117	49	166	275

BW	ADJ. WW	ADJ. YW	FAT	ADJ. IMF	ADJ. REA
90	825	1,558	0.61	2.94	13.5



Herd bull material that will serve all purposes – attractive, growthy, thick-ended feeder cattle or a tremendous set of fancy, high maternal, broody replacement females! He can do both because for generations we've been breeding cattle with a balanced-trait selection process. You can buy with confidence as this Capitalist son and the cows behind him won't disappoint. We love our 'Bear' females – they're moderate, massive, easy keepin' and fertile with great mothering ability. You can expect nothing less from his daughters! Outstanding individual performance ratio'ing a 120 for weaning and 118 for yearling with EPDs in the Top 5% WW, 10% YW, 25% CEM, 10% Claw, 2% Angle, 3% CW, 20% \$W, 2% \$F, 10% \$B and 10% \$C.



# Lot 9



## LOT 9 - Vision Capitalist 0005

DOB: 1/8/20 | TATTOO: 0005 | REG. 19858172

Connealy Capitalist 028 #  
**LD Capitalist 316**  
 LD Dixie Erica 2053  
 Moore 902-Focus 008  
**Vision Pet Polite 878**  
 SandPoint Pet Polite 1391

S A V Final Answer 0035 #  
 Prides Pita of Conanga 8821  
 C A Future Direction 5321 #  
 LD Dixie Erica Oar 0853  
 Moore 602-Mytty I Focus 708B  
 Moore Style 708 #  
 G A R Ultimate #  
 Sandpoint Pet Polite 7835

CED	BW	WW	YW	MILK	CW	MARB	REA	\$M	\$W	\$F	\$G	\$B	\$C
10	-0.4	68	120	26	66	0.35	0.58	69	75	114	38	152	266
BW	ADJ. WW	ADJ. YW	FAT	ADJ. IMF	ADJ. REA								
66	826	1,469	0.47	3.19	14.8								



It's hard to find Angus bulls that offer this much real-world performance and an impressive EPD profile that still give you this much look, quality, sound structure, good feet and maternal function. His impressive performance figures compliment his design and structure making him a total package herd sire candidate. He's earned phenomenal individual ratios as his dam's first calf with birth 88, weaning 112, yearling 110, ribeye 105 and fat 105. With EPDs in the Top 20% CED, 20% BW, 20% WW, 20% YW, 25% SC, 15% CEM, 15% Claw, 3% Angle, 5% CW, 25% \$M, 15% \$W, 3% \$F, 20% \$B and 15% \$C - he'll be on the short list for many!

# Lot 10



## LOT 10 - Vision Capitalist 0063

DOB: 2/17/20 | TATTOO: 0063 | REG. 19858198

Connealy Capitalist 028 #  
**LD Capitalist 316**  
 LD Dixie Erica 2053  
 Vision Cash 3414  
**Vision Bachel Beauty 673**  
 Deppe Bachel Beauty 398

S A V Final Answer 0035 #  
 Prides Pita of Conanga 8821  
 C A Future Direction 5321 #  
 LD Dixie Erica Oar 0853  
 Barstow Cash #  
 Vision Miss Emulous 111  
 BC Eagle Eye 110-7 #  
 Deppe Lut Bachel Beauty 902

CED	BW	WW	YW	MILK	CW	MARB	REA	\$M	\$W	\$F	\$G	\$B	\$C
13	-1.3	68	119	24	46	0.33	0.92	65	77	85	41	127	230
BW	ADJ. WW	ADJ. YW	FAT	ADJ. IMF	ADJ. REA								
78	681	1,297	0.43	3.16	14.8								



Here's another rock-solid Capitalist son with an impressive EPD tabulation in the Top 10% CED, 10% BW, 20% WW, 20% YW, 15% CEM, 20% Claw, 10% RE and 10% \$W. Take advantage of his ability to give you peace of mind during calving and progeny with the added weight and thickness at weaning. The bottom side of his pedigree brings a fresher genetic selection for many of our customers.

# Lot 11



## LOT 11 - Vision Capitalist 9018

DOB: 1/13/19 | TATTOO: 9018 | REG. 19581712

Connealy Capitalist 028 #  
**LD Capitalist 316**  
 LD Dixie Erica 2053  
 Vision Unanimous 1418 #  
**Vision Primrose 734**  
 MCATL Primrose 1021-7861

S A V Final Answer 0035 #  
 Prides Pita of Conanga 8821  
 C A Future Direction 5321 #  
 LD Dixie Erica Oar 0853  
 Visiontopline Royal Stockman  
 Vision Edella 665 #  
 M A Broadside 1334-822 #  
 SAV Primrose 7861

CED	BW	WW	YW	MILK	CW	MARB	REA	\$M	\$W	\$F	\$G	\$B	\$C
7	0.8	62	113	28	45	0.82	0.47	64	70	92	57	149	257
BW	ADJ. WW	ADJ. YW	FAT	ADJ. IMF	ADJ. REA								
73	704	1,118	0.18	4.47	12								



He's genetically designed to bring you the three-dimensional mass and maternal strength balanced with improved carcass merit. We like it when a plan comes together. This two-year old Capitalist son has matured extremely well and has the extra age and durability to give you more breeding season coverage. He's our highest marbling Capitalist son with EPDs in the Top 30% YW, 30% Milk, 25% Marb, 20% \$W, 25% \$F, 25% \$G, 25% \$B and 20% \$C.



**Vision Emperial 6003**

DOB: 1/6/16 | TATTOO: 6003 | REG. 18653296

Our \$15,000 top selling bull in 2017 selected by Scott Morris, Sunset Angus Farms, Balko, OK and one of the more exciting young sires we've developed and used AI to date. Progeny have recorded impressive ratios of 100 BW, 102 WW, 102 YW, 104 SC, 103 RE and 114 Fat further substantiating his curve-bending EPD profile that ranks in the Top 3% WW, 10% YW, 20% SC, 25% CEM, 5% CW, 10% \$W and 15% \$F. Emperial delivers the stoutness, rib shape and docility we want. His calves come easy with lots of vigor and soon become stout and fancy. The final proof are his daughters that look to follow the type of his dam with massive center body, feminine head and neck with near perfect udders.

SAV Pioneer 7301 #  
**SAV Platinum 0010 #**  
 SAV Greystone Jannet 5345 #  
 Vision Unanimous 1418 #  
**Vision Karama 430 #**  
 Vision Karama 860

SAV Final Answer 0035 #  
 SAV Blackbird 5297  
 SAV 8180 Traveler 004 #  
 SAV Jannet 7059  
 Visiontopline Royal Stockman  
 Vision Edella 665 #  
 SydGen On The Mark  
 Vision Karama 534

**REFERENCE SIRE**

CED	BW	WW	YW	MILK	SC	DOC	HP	CW	MARB	RE	\$M	\$W	\$F	\$G	\$B	\$C
5	1.0	81	137	23	1.32	15	9.8	65	0.28	0.27	51	81	104	25	130	220

**Lot 12****LOT 12 - Vision Emperial 0016**

DOB: 1/13/20 | TATTOO: 0016 | REG. 19853858

SAV Pioneer 7301 #  
**Vision Emperial 6003**  
 Vision Karama 430 #

TopLine Vision Fly Over 1395  
**Vision Honey Bear 450**  
 WAF Honey Bear 251 #

SAV Greystone Jannet 5345 #  
 Vision Unanimous 1418 #  
 Vision Karama 860  
 Silveiras Style 9303  
 Top Line Ellie 0635  
 WAF Grid Topper 7110  
 Waf Lass 042

CED	BW	WW	YW	MILK	CW	MARB	REA	\$M	\$W	\$F	\$G	\$B	\$C
3	2.6	65	117	27	43	0.41	0.50	43	64	83	38	121	200

BW	ADJ. WW	ADJ. YW	FAT	ADJ. IMF	ADJ. REA
88	788	1,495	0.61	4.45	15.2



A stout, attractive and really complete Emperial son with the genetic predisposition to produce an exciting set of feeder cattle and replacement females. You don't want extremes in your cowherd and this bull doesn't have them. He combines everything good into one really impressive package – moderate birth, outstanding performance, fleshing ability, super disposition and carcass merit. He's backed by one of our most productive, fertile and carcass improving females that boasts an impeccable progeny record of birth 5@100, weaning 5@103, yearling 5@102, IMF 2@116, ribeye 2@107 and fat 2@106 with a 359-day calving interval. You should expect nothing less from his daughters. The 'Honey Bear' cows are moderate in size, fertile, hard working and earn their keep!

**Lot 13****LOT 13 - Vision Emperial 0021**

DOB: 1/15/20 | TATTOO: 0021 | REG. 19853861

SAV Pioneer 7301 #  
**Vision Emperial 6003**  
 Vision Karama 430 #

SAV Resource 1441 #  
**Vision Victoria 520 #**  
 Flag Victoria 90761

SAV Greystone Jannet 5345 #  
 Vision Unanimous 1418 #  
 Vision Karama 860  
 Rito 707 of Ideal 3407 7075  
 SAV Blackcap May 4136  
 Vision Grid Maker 5014  
 SCR Victoria 4505

CED	BW	WW	YW	MILK	CW	MARB	REA	\$M	\$W	\$F	\$G	\$B	\$C
1	2.7	69	125	17	55	0.24	0.24	34	51	95	25	121	191

BW	ADJ. WW	ADJ. YW	FAT	ADJ. IMF	ADJ. REA
85	806	1,518	0.57	3.19	12.8



One of the most three-dimensional bulls in our offering with more total body mass, substance and fleshing ability. In fact, you can pick this powerhouse of a bull out from the feed alley! He's a standout that captures your attention from every angle. He's backed by one of our most productive and carcass improving females. His Pathfinder Resource dam boasts an impeccable progeny record with weaning 4@106, yearling 4@104, IMF 4@109 and ribeye 4@108 with a calving interval of 368 days.



*Lot 14*

**LOT 14 - Vision Emperial 0008**

DOB: 1/10/20 | TATTOO: 0008 | REG. 19853855

S A V Platinum 0010 #  
**Vision Emperial 6003**  
 Vision Karama 430 #  
 Moore 902-Focus 008  
**Vision Burgess 646**  
 ALC Burgess R16S #

S A V Pioneer 7301 #  
 S A V Greystone Jannet 5345 #  
 Vision Unanimous 1418 #  
 Vision Karama 860  
 Moore 602-Mitty I Focus 708B  
 Moore Style 708 #  
 Leachman Right Time #  
 ALC Burgess L33K

CED	BW	WW	YW	MILK	CW	MARB	REA	\$M	\$W	\$F	\$G	\$B	\$C
10	0.4	77	130	26	59	0.18	0.39	54	82	93	24	116	207
BW	ADJ. WW	ADJ. YW	FAT	ADJ. IMF	ADJ. REA								
71	833	1,529	0.68	2.31	15.6								



Definite calving-ease specialist with an impressive birth to yearling spread and a pedigree built on maternal function, longevity and convenience traits! Impressive individual performance ratios of birth 86, weaning 121, yearling 116 and IMF 111 backed with EPDs that rank in the Top 20% CED, 5% WW, 10% YW, 25% CEM, 15% CW, 5% \$W and 25% \$F. Stems from one of our best cow families with a dam that records progeny records of birth 3@96, weaning 3@112, yearling 2@119 and ribeye 1@111 while his Pathfinder grandam boasts an impressive progeny record of weaning 13@104, yearling 11@101, IMF 8@111, ribeye 8@100 and fat 8@111 and has calved with her 14th AI calf with a calving interval less than 365 days. Fertility, longevity and sustainability in a cow family doesn't get much better than that!

**MOORE 902-FOCUS 008**

Moore 902-Focus 008 was our top selling selection of the 2014 Moore Angus Bull Sale in Artesian, SD where he overwhelmed us with his impressive phenotype, flawless structure, athleticism and individual performance. He served as a reliable calving-ease herd sire with curve-bending EPDs and outcross genetics. His daughters are becoming his greatest contribution having a positive impact on our breeding program. In this sale offering, 14 daughters produced 8 bulls and 6 heifers worthy of your appraisal in Lots 9, 14, 23, 25, 27, 38, 47, 54, 60, 61, 64, 71, 72 and 75. Progeny have recorded average ratios of 99 birth, 100 weaning, 102 yearling, 100 scrotal, 103 IMF, 114 Fat and a 103 nursing ratio on 34 daughters. He ranks in the Top 15% WW, 15% YW, 10% Milk, 3% Claw, 35% Angle, 20% CW, 10% \$W and 20% \$F.


*Lot 15*

**LOT 15 - Vision Moore Focus 9064**

DOB: 3/16/19 | TATTOO: 9064 | REG. 19737509

Moore 602-Mitty I Focus 708B  
**Moore 902-Focus 008**  
 Moore Style 708 #  
 G A R Predestined #  
**Vision Black Oak 804**  
 Vision Black Oak 1023

Moore Mitty In Focus 422  
 Moore Sitz Tradition 38  
 PV Moore Style H49  
 Moore Sitz Tradition 38  
 B/R New Design 036 #  
 G A R Ext 4206 #  
 S A F Focus of E R #  
 Vision Black Oak 9009

CED	BW	WW	YW	MILK	CW	MARB	REA	\$M	\$W	\$F	\$G	\$B	\$C
5	1.6	42	82	31	23	0.60	0.32	49	45	62	45	107	188
BW	ADJ. WW	ADJ. YW	FAT	ADJ. IMF	ADJ. REA								
86	640	1,122	0.27	4.31	13.1								

Unique opportunity to acquire the last direct son of Moore 902-Focus 008 to sell. He offers moderate birth with added age and maturity of a coming two-year old with extra length and extension in a very attractive, athletic and high maternal package with a Top 15% Milk and 25% \$EN EPDs. His dam is the epitome of fertility, longevity and sustainability recording 9 progeny with an average 99 birth ratio, 100 weaning ratio, 100 yearling ratio and 103 ribeye ratio. His daughters would be a valued addition to your herd.



## Vision Overdrive 7001

DOB: 1/1/17 | TATTOO: 7001 | REG. 18950407

The \$20,000 top selling bull of our 2018 sale selected by Frank Cattle & Genetics, Chuck & Jerry Ardissona, Don Dugan and Mike Kehlar. With his second calf crop evaluated, we believe Overdrive has the potential to rival Unanimous as a 'Quality' breeding bull. Overdrive represents 7 generations of predictable and proven calving-ease genetics without sacrificing performance, natural thickness, volume and structural integrity! His calves consistently come early and easy with exceptional vigor and an impressive look. The quality runs deep in these Overdrive sons. You'll have to travel many miles to find a sire group that is this consistent in providing reliable calving-ease genetics in an attractive package infused with strong maternal value and convenience traits important to your cow herd. Overdrive's first daughters in production are exceeding our expectations with their calving-ease, mothering ability, superb udder quality and fleshing ability proving him to also be a cow-maker sire.

AAR Ten X 7008 SA #  
SAV Ten Speed 3022  
SAV Madame Pride 1134 #  
SITZ Logic Y46 #  
Vision Proud Lassie 531 #  
Vision Proud Lassie 911 #

Mytty In Focus #  
AAR Lady Kelton 5551 #  
SAV Bismarck 5682 #  
SAV Madame Pride 9100  
Sitz Dimension 8607 #  
Sitz Forever Lady 6121 #  
SAV Final Answer 0035 #  
Vision Proud Lassie 726

## REFERENCE SIRE



CED	BW	WW	YW	MILK	SC	DOC	HP	CW	MARB	RE	\$M	\$W	\$F	\$G	\$B	\$C
16	-2.4	61	121	29	1.23	19	16.2	39	0.45	0.61	68	73	80	43	122	226

## Lot 16



O H L ANGEL 2172  
GRANDAM OF LOT 16

## LOT 16 - Vision Overdrive 0048

DOB: 2/5/20 | TATTOO: 0048 | REG. 19853868

SAV Ten Speed 3022  
Vision Overdrive 7001  
Vision Proud Lassie 531 #  
Vision Unanimous 1418 #  
Vision Angel 716  
O H L Angel 217-2

AAR Ten X 7008 SA #  
SAV Madame Pride 1134 #  
SITZ Logic Y46 #  
Vision Proud Lassie 911 #  
Visiontopline Royal Stockman  
Vision Edella 665 #  
Plainview Lutton E102  
O H L Angel 7171

CED	BW	WW	YW	MILK	CW	MARB	REA	\$M	\$W	\$F	\$G	\$B	\$C
8	2.2	72	128	18	45	1.04	0.27	61	64	79	64	143	246

BW	ADJ. WW	ADJ. YW	FAT	ADJ. IMF	ADJ. REA
81	829	1,504	0.45	4.01	13.3



An impressive individual to lead off this sire group and a front pasture kind of herd bull!

He's a head turner that can deliver those fancy, market-topping feeder cattle or a high quality set of replacement heifers. He's captivating in the pen and on paper posting individual ratios of 100 birth, 121 weaning, 114 yearling and 115 IMF with EPDs in the Top 10% WW, 10% YW, 1% CEM, 35% Claw, 10% Angle, 10% Marb, 30% \$W, 15% \$G, 30% \$B and 30% \$C. His dam is one of our most impressive young females earning an elite spot in our donor program for 2021 recording BR 2@97, WR 2@115, YR 2@113, IMF 2@113, RE 2@102 and Fat 2@139. His grandam, our foundation Angel, blended impeccable phenotype and class with massive performance and superb udder quality.

## Lot 17



## LOT 17 - Vision Overdrive 0044

DOB: 1/28/20 | TATTOO: 0044 | REG. 19853866

SAV Ten Speed 3022  
Vision Overdrive 7001  
Vision Proud Lassie 531 #  
Connealy Confidence 0100 #  
Vision Pride 393  
SandPoint Pride 1359

AAR Ten X 7008 SA #  
SAV Madame Pride 1134 #  
SITZ Logic Y46 #  
Vision Proud Lassie 911 #  
Connealy Tobin  
Becka Gala of Conanga 8281  
Connealy Consensus 7229 #  
SandPoint Pride 4196

CED	BW	WW	YW	MILK	CW	MARB	REA	\$M	\$W	\$F	\$G	\$B	\$C
16	-2.0	48	93	29	30	0.29	0.93	84	58	70	42	112	229

BW	ADJ. WW	ADJ. YW	FAT	ADJ. IMF	ADJ. REA
78	705	1,302	0.38	2.14	14.9



Genetically designed for the most predictable calving-ease genetics one can find without sacrificing thickness, body and the attractive phenotype you've come to expect from our program. A light 78 lb birth weight, double digit CED and negative BW EPDs combined with that smooth made, heifer bull look only leaves Mother Nature left to chance. Here's the bonus - there's tremendous maternal value to be captured by keeping his heifers back as replacements. His dam is a maternal sister to Lot 3 recording impressive progeny ratios of birth 2@ 99, weaning 2@ 107, yearling 2@100, IMF 2@133, ribeye 2@103 and fat 2@89. He ranks in the Top 1% CED, 4% BW, 5% HP, 2% CEM, 25% Milk, 10% Doc, 25% Claw, 1% Angle, 20% PAP, 10% RE, 15% Fat and 3% \$M.



*Lot 18*

**LOT 18 - Vision Overdrive 0003**

DOB: 1/5/20 | TATTOO: 0003 | REG. 19853852

S A V Ten Speed 3022  
**Vision Overdrive 7001**  
 Vision Proud Lassie 531 #  
 Mill Brae Comrade 6184  
**Mill Brae 6184 Delia 8305**  
 Mill Brae SW Delia 6263

A A R Ten X 7008 S A #  
 S A V Madame Pride 1134 #  
 SITZ Logic Y46 #  
 Vision Proud Lassie 911 #  
 Connealy Comrade 1385 #  
 Mill Brae Obj Blackcap 9244 #  
 Sitz Wisdom 481T #  
 Mill Brae Pro Delia 1104

CED	BW	WW	YW	MILK	CW	MARB	REA	\$M	\$W	\$F	\$G	\$B	\$C
12	-1.3	51	103	38	36	0.27	0.84	71	69	79	37	116	221
BW	ADJ. WW	ADJ. YW	FAT	ADJ. IMF	ADJ. REA								
71	736	1,277	0.32	3.18	13								



Predictable calving-ease and high maternal genetics! The double digit CED and negative BW EPDs combine with this bull's youthful head, smooth shape and build to provide you a heifer bull with predictability. The added bonus – he is attractive, sound made and docile as a kitten with a super EPD tabulation ranking in the Top 10% CED, 10% BW, 20% HP, 5% CEM, 2% Milk, 20% Doc, 2% PAP, 15% RE, 20% \$M and 20% \$W. The maternal function and udder quality of his two-year old dam is impressive making his heifers the keepin' kind.

*Lot 19*

**LOT 19 - Vision Overdrive 0031**

DOB: 1/19/20 | TATTOO: 0031 | REG. 19853863

S A V Ten Speed 3022  
**Vision Overdrive 7001**  
 Vision Proud Lassie 531 #  
 Ellingson Chaps 4095  
**Vision Proud Lassie 802**  
 Vision Proud Lassie 635

A A R Ten X 7008 S A #  
 S A V Madame Pride 1134 #  
 SITZ Logic Y46 #  
 Vision Proud Lassie 911 #  
 S A V Resource 1441 #  
 E A Blackcap 0360 #  
 Vision Unanimous 1418 #  
 Vision Proud Lassie 726

CED	BW	WW	YW	MILK	CW	MARB	REA	\$M	\$W	\$F	\$G	\$B	\$C
10	-0.7	62	123	24	40	0.61	0.49	78	66	81	47	129	245
BW	ADJ. WW	ADJ. YW	FAT	ADJ. IMF	ADJ. REA								
70	819	1,430	0.59	4.79	15								



Not something you see every day – Predictable calving-ease combined with exceptional performance that's backed by data integrity and genomics. He's definitely a Vision bull – growthy, attractive, muscular, deep bodied, easy fleshing and easy going! He recorded phenomenal individual ratios of 93 birth, 111 weaning, 108 yearling, 134 IMF, 106 ribeye and 135 fat with an impressive EPD profile in the Top 20% CED, 15% BW, 15% YW, 25% CEM, 15% Doc, 10% \$M, 30% \$W and 30% \$C.

*Lot 20*

**LOT 20 - Vision Overdrive 0012**

DOB: 1/12/20 | TATTOO: 0012 | REG. 19853857

S A V Ten Speed 3022  
**Vision Overdrive 7001**  
 Vision Proud Lassie 531 #  
 Vision Imperial 6003  
**Vision Victoria 836**  
 Vision Victoria 408

A A R Ten X 7008 S A #  
 S A V Madame Pride 1134 #  
 SITZ Logic Y46 #  
 Vision Proud Lassie 911 #  
 S A V Platinum 0010 #  
 Vision Karama 430 #  
 TopLine Vision Fly Over 1395  
 Vision Victoria 208

CED	BW	WW	YW	MILK	CW	MARB	REA	\$M	\$W	\$F	\$G	\$B	\$C
10	-0.1	61	110	31	46	0.61	0.39	74	75	83	44	127	239
BW	ADJ. WW	ADJ. YW	FAT	ADJ. IMF	ADJ. REA								
67	758	1,358	0.42	3.07	14								



Without a doubt, Overdrive delivers predictability at calving time with shorter gestation length and lighter birth weights. You can expect this Overdrive son to do the same. You can also expect superior fertility, maternal function and longevity. His Imperial dam is an impressive young female with a great udder! He ranks in the Top 20% CED, 25% BW, 15% SC, 25% HP, 15% CEM, 15% Milk, 15% PAP, 15% \$M and 15% \$W.



*Lot 21***LOT 21 - Vision Overdrive 0039**

DOB: 1/25/20 | TATTOO: 0039 | REG. 19921421

S A V Ten Speed 3022  
**Vision Overdrive 7001**  
 Vision Proud Lassie 531 #  
 Vision Advance 6009  
**Vision Blanche 837**  
 Vision Blanche 606

A A R Ten X 7008 SA #  
 S A V Madame Pride 1134 #  
 SITZ Logic Y46 #  
 Vision Proud Lassie 911 #  
 Koupal Advance 28 #  
 Vision Georgina 448 #  
 S A V International 2020 #  
 Vision Blanche 864 #

CED	BW	WW	YW	MILK	CW	MARB	REA	\$M	\$W	\$F	\$G	\$B	\$C
13	-0.4	46	93	36	22	0.64	0.49	53	62	60	48	108	193
BW	ADJ. WW	ADJ. YW	FAT	ADJ. IMF	ADJ. REA								
78	737	1,348	0.61	3.47	14.6								



Added center body dimension, fleshing ability and thickness in a reliable calving-ease package. Use Lot 21 with confidence on your heifers or young cows. He uniquely combines a Milk EPD in the Top 3% with a \$EN in the Top 30%. Be sure to take a look at his grandam's Imperial daughter featured as Lot 63.

**LOT 22 - Vision Overdrive 0071**

DOB: 3/7/20 | TATTOO: 0071 | REG. 19853876

S A V Ten Speed 3022  
**Vision Overdrive 7001**  
 Vision Proud Lassie 531 #  
 Sitz Investment 660Z #  
**T K Princess D706**  
 T K Princess B401

A A R Ten X 7008 SA #  
 S A V Madame Pride 1134 #  
 SITZ Logic Y46 #  
 Vision Proud Lassie 911 #  
 Connealy Final Product #  
 Sitz Ellunas Elite 656T #  
 S A V DeWalt 1034  
 T K Princess X834

CED	BW	WW	YW	MILK	CW	MARB	REA	\$M	\$W	\$F	\$G	\$B	\$C
10	-1.8	50	102	29	22	0.09	0.24	68	61	62	18	81	173
BW	ADJ. WW	ADJ. YW	FAT	ADJ. IMF	ADJ. REA								
75	625	Too Young	0.52	2.82	13.2								



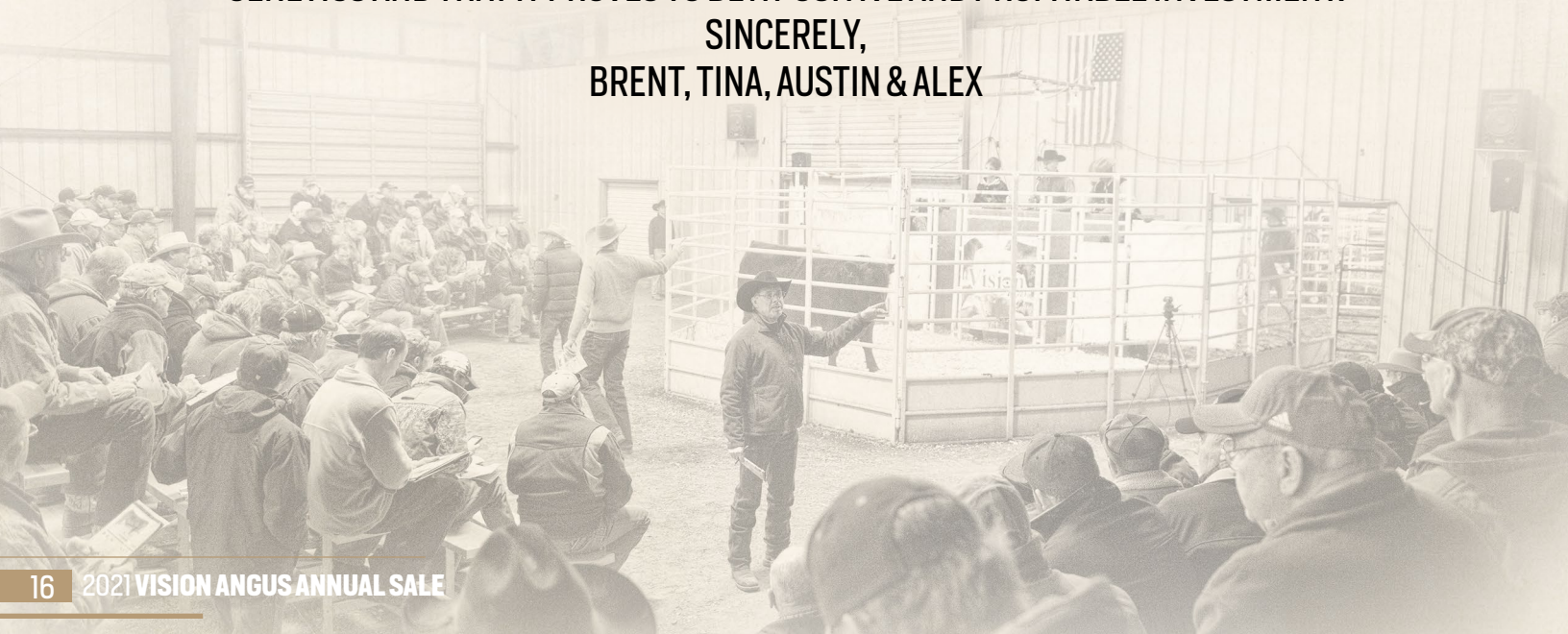
Fits the bill of a reliable heifer bull – genetically and phenotypically. Take note of his light 75 lb BW, double digit CED and negative BW EPDs combined with the economically relevant traits important to your cow herd. He ranks in the Top 20% CED, 4% BW, 30% SC, 25% HP, 15% CEM, 25% Milk, 4% \$EN and 25% \$M.

# Vision Angus

## Our Personal Commitment...

...IS TO ENSURE THAT YOU ARE SATISFIED WITH YOUR PURCHASE OF VISION ANGUS GENETICS AND THAT IT PROVES TO BE A POSITIVE AND PROFITABLE INVESTMENT.

SINCERELY,  
 BRENT, TINA, AUSTIN & ALEX





## Sitz Accomplishment 720F

DOB: 1/24/18 | TATTOO: 720F | REG. 19078208

In our efforts to continue to breed for balanced-trait genetics, Accomplishment made our short list of sires after topping the 2019 Sitz Sale at \$80,000. We were impressed with his unique combination of eye appeal, calving-ease and carcass merit with more muscle and body dimension. Even though he's a big bodied, powerfully constructed bull that excels for thickness, we've been very pleased with calf shape and weights at birth. He's a true breeding bull offering reliable calving-ease genetics with more three-dimensional mass and thickness. You'll appreciate our first offering of these Accomplishment sons! Accomplishment is a balanced-trait sire with EPDs in the Top 15% CED, 20% BW, 10% WW, 15% YW, 10% SC, 10% HP, 1% CEM, 25% Doc, 10% CW, 10% Marb, 15% \$M, 25% \$W, 15% \$F, 20% \$G, 15% \$B and 10% \$C.

Poss Lasting Impact 3118

**Poss Achievement**

Poss Erica 327

S A V Resource 1441 #

**Sitz Barbaramere Nell 166D**

Sitz Barbaramere Nell 14Y

Poss Easy Impact 0119

Poss Blackbird 005

KM Broken Bow 002 #

Poss Erica 1203

Rito 707 of Ideal 3407 7075

S A V Blackcap May 4136

Connealy Right Answer 746 #

Sitz Barbaramere Nell 143W

CED	BW	WW	YW	MILK	SC	DOC	HP
12	0.3	74	128	18	1.62	22	15.6

CW	MARB	RE	\$M	\$W	\$F	\$G	\$B	\$C
61	0.95	0.49	72	69	102	60	162	282

## REFERENCE SIRE



## Lot 23



## LOT 23 - Vision Accomplishment 0060

DOB: 2/13/20 | TATTOO: 0060 | REG. 19857917

Poss Achievement

**Sitz Accomplishment 720F**

Sitz Barbaramere Nell 166D

Moore 902-Focus 008

**Vision Barbara 675**

Laflins Barbara 2102

Poss Lasting Impact 3118

Poss Erica 327

S A V Resource 1441 #

Sitz Barbaramere Nell 14Y

Moore 602-Mytti I Focus 708B

Moore Style 708 #

S A V Final Answer 0035 #

Laflins Barbara 0117

CED	BW	WW	YW	MILK	CW	MARB	REA	\$M	\$W	\$F	\$G	\$B	\$C
4	1.1	64	115	33	52	0.79	0.43	61	76	91	51	143	246

BW	ADJ. WW	ADJ. YW	FAT	ADJ. IMF	ADJ. REA
88	782	1,489	0.49	5.11	15.8



He's accomplished some great things already as his dam's first calf earning impressive individual ratios of 114 weaning, 113 yearling, 112 ribeye and 146 IMF. But we expect his greatest accomplishment will be making the right kind of females that'll earn their keep and the right kind of feeder cattle that will bring the cattle buyer back for years to come. He's the total package in the pen and on paper with EPDs in the Top 30% WW, 25% YW, 25% CEM, 10% Milk, 25% Claw, 4% Angle, 25% CW, 25% Marb, 10% \$W, 25% \$F, 30% \$B and 30% \$C.

## Lot 24



## LOT 24 - Vision Accomplishment 0049

DOB: 2/5/20 | TATTOO: 0049 | REG. 19857918

Poss Achievement

**Sitz Accomplishment 720F**

Sitz Barbaramere Nell 166D

SITZ Logic Y46 #

**Vision Proud Lassie 531 #**

Vision Proud Lassie 911 #

Poss Lasting Impact 3118

Poss Erica 327

S A V Resource 1441 #

Sitz Barbaramere Nell 14Y

Sitz Dimension 8607 #

Sitz Forever Lady 6121 #

S A V Final Answer 0035 #

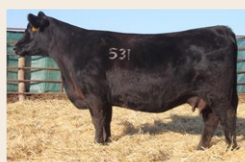
Vision Proud Lassie 726

CED	BW	WW	YW	MILK	CW	MARB	REA	\$M	\$W	\$F	\$G	\$B	\$C
12	-2.4	55	95	30	35	0.46	0.10	55	71	69	33	102	187

BW	ADJ. WW	ADJ. YW	FAT	ADJ. IMF	ADJ. REA
73	734	1,396	0.73	3.19	13.8



Generations of predictable calving-ease and maternal value represented here. He leaves little room to chance with a double digit CED, negative BW EPD, 73 lb BW, 87 birth ratio and an exceptional cow family that consistently delivers shorter gestation, lower birth genetics. Females out of this maternal brother to Vision Overdrive 7001 will be some of the easiest keepin', most fertile and highly productive females you'll ever own. His Pathfinder dam is one of our very best females recording impressive progeny ratios of birth 4@85, weaning 4@108, yearling 4@107, IMF 3@100, ribeye 3@105 and fat 3@125. And he didn't sacrifice performance recording a 107 weaning ratio and 106 yearling ratio. His EPDs rank in the Top 10% CED, 3% BW, 2% SC, 5% CEM, 20% Milk, 20% PAP and 20% \$W.



**VISION PROUD LASSIE 531**  
 DAM OF LOT 24 AND VISION OVERDRIVE 7001

## LOT 25 - Vision Accomplishment 0050

DOB: 2/5/20 | TATTOO: 0050 | REG. 19857919

Poss Achievement

**Sitz Accomplishment 720F**

Sitz Barbaramere Nell 166D

Moore 902-Focus 008

**Vision Blackcap 548**

Vision Blackcap 609

Poss Lasting Impact 3118

Poss Erica 327

S A V Resource 1441 #

Sitz Barbaramere Nell 14Y

Moore 602-Mytti I Focus 708B

Moore Style 708 #

Boyd On Target 1083 #

Vision HF Blackcap 0015 #

CED	BW	WW	YW	MILK	CW	MARB	REA	\$M	\$W	\$F	\$G	\$B	\$C
10	0.4	55	89	27	29	0.72	0.41	47	62	54	49	103	181

BW	ADJ. WW	ADJ. YW	FAT	ADJ. IMF	ADJ. REA
75	676	1,298	0.42	5.65	13.5



You can be assured that this Accomplishment son will be easy to work with, easy calving and sire feeder calves that are stout and fancy with the bred-in ability to grade. He represents three generations of high marbling genetics with an individual 162 IMF ratio and a dam and grandam with progeny IMF ratios of 3@129 and 6@104, respectively. His EPDs are in the Top 20% CED, 30% BW, 5% PAP and 30% Marb.



**Woodhill Blueprint**

DOB: 2/10/17 | TATTOO: E60 | REG. 18876777

Blueprint is one of the more unique bulls featured at Select Sires that offers reliable calving-ease genetics in an attractive package with the proper balance of traits for end-product merit. He was bred in one of the most respected herds in the country – Woodhill Farms and from the legendary Woodhill Evergreen cow family. Blueprint's pedigree is the result of years of stacking genetics for functional cattle that perform in every segment of the business. These Blueprint sons are moderate birth cattle with exceptional performance, body dimension and added carcass value. Blueprint's EPDs rank in the Top 30% CED, 30% BW, 30% Doc, 30% Marb, 5% RE, 20% \$G, 25% \$B and 25% \$C.

Connealy Confidence 0100 #  
**Connealy Confidence Plus**  
 Elbanna of Conanga 1209  
 Tehama Sierra Cut Z118  
**Woodhill Evergreen Z291-B233**  
 Woodhill Evergreen U6-Z291

Connealy Tobin  
 Becka Gala of Conanga 8281  
 Connealy Consensus #  
 Elbasta of Conanga 9703  
 D R Sierra Cut 7404 #  
 Tehama Echo X315 #  
 SydGen C C & 7 #  
 Woodhill Evergreen S28-U6

**REFERENCE SIRE**

CED	BW	WW	YW	MILK	SC	DOC	HP	CW	MARB	RE	\$M	\$W	\$F	\$G	\$B	\$C
9	0.3	58	112	26	0.90	21	10.0	41	0.67	0.97	57	60	89	59	148	249

**Lot 26****LOT 26 - Vision Blueprint 0036**

DOB: 1/25/20 | TATTOO: 0036 | REG. 19856319

Connealy Confidence Plus  
**Woodhill Blueprint**  
 Woodhill Evergreen Z291-B233  
 S A V 004 Density 4336 #  
**Vision Evergreen 308**  
 ALC Evergreen C29R #

Connealy Confidence 0100 #  
 Elbanna of Conanga 1209  
 Tehama Sierra Cut Z118  
 Woodhill Evergreen U6-Z291  
 S A V 8180 Traveler 004 #  
 S A V May 7238  
 K C F Bennett Coalition SCC #  
 Roth Miss Traveler 2095

CED	BW	WW	YW	MILK	CW	MARB	REA	\$M	\$W	\$F	\$G	\$B	\$C
2	3.4	85	145	26	65	0.34	0.77	54	81	101	38	139	234

BW	ADJ. WW	ADJ. YW	FAT	ADJ. IMF	ADJ. REA
94	792	1,523	0.54	2.8	15.2



Bred to exhibit more shape, muscle and total body dimension – and it shows from every angle! He's a robust, masculine herd bull that's heavy structured with a powerful hip and rear leg with added depth of body and thickness. He boasts impressive individual ratios of weaning 115, yearling 115, ribeye 108 and fat 120 with EPDs in the Top 2% WW, 2% YW, 15% SC, 10% CW, 20% RE, 5% \$W and 15% \$F. You can put a lot of faith in this Blueprint son that stems from the same productive cow family as Lots 1, 2 and 4. He'll deliver the added growth, performance and thickness we've come to expect from our Evergreen family.

**Lot 27****LOT 27 - Vision Blueprint 0040**

DOB: 1/25/20 | TATTOO: 0040 | REG. 19856115

Connealy Confidence Plus  
**Woodhill Blueprint**  
 Woodhill Evergreen Z291-B233  
 Moore 902-Focus 008  
**Vision Silver 863**  
 Vision Silver 051

Connealy Confidence 0100 #  
 Elbanna of Conanga 1209  
 Tehama Sierra Cut Z118  
 Woodhill Evergreen U6-Z291  
 Moore 902-Mytty 1 Focus 708B  
 Moore Style 708 #  
 S A V 004 Predominant 4438 #  
 Vision Silver 763 #

CED	BW	WW	YW	MILK	CW	MARB	REA	\$M	\$W	\$F	\$G	\$B	\$C
7	2.3	86	149	20	68	0.32	0.93	61	77	110	40	150	256

BW	ADJ. WW	ADJ. YW	FAT	ADJ. IMF	ADJ. REA
87	804	1,478	0.52	3.83	15.7



Exceptional growth and performance in this good-footed Blueprint son that boasts individual ratios of weaning 109, yearling 111, IMF 107, ribeye 111 and fat 121 as his dam's first calf. Our Silver cow family is a road map to success for delivering extra performance and size without sacrificing carcass value and convenience traits relevant to your cow herd. His grandam records an impressive record of WR 6@105, YR 5@106, RE 3@104 and Fat 3@115 and the dam behind her earned a progeny record of BR 8@99, WR 8@101, YR 8@103, RE 6@104 and Fat 6@106. His EPDs rank in the Top 1% WW, 2% YW, 20% SC, 25% CEM, 20% Doc, 10% Claw, 10% Angle, 4% CW, 10% RE, 10% \$W, 4% \$F, 20% \$B and 20% \$C.



# Lot 28



## LOT 28 - Vision Blueprint 0038

DOB: 1/25/20 | TATTOO: 0038 | REG. 19856110

Connealy Confidence Plus  
Woodhill Blueprint  
Woodhill Evergreen Z291-B233  
Baldridge Bronc  
Vision Silver 808  
Vision Silver 609

Connealy Confidence 0100 #  
Elbanna of Conanga 1209  
Tehama Sierra Cut Z118  
Woodhill Evergreen U6-Z291  
EF Commando 1366 #  
Baldridge Isabel Y69  
Vision Unanimous 1418 #  
Vision Silver 051

CED	BW	WW	YW	MILK	CW	MARB	REA	\$M	\$W	\$F	\$G	\$B	\$C
0	2.4	73	131	18	43	0.76	0.67	51	63	82	61	143	236
BW	ADJ. WW	ADJ. YW	FAT	ADJ. IMF	ADJ. REA								
84	805	1,475	0.42	3.86	14.3								



With four generations of outstanding performance bred into him, you can expect Lot 28 to deliver more payweight! He comes from the same Silver cow family backing Lot 27 and a two-year old Bronc daughter that is doing an impressive job in our younger females. He earned individual ratios of 110 weaning, 111 yearling, 108 IMF, 101 ribeye and 98 fat and EPDs in the Top 10% WW, 10% YW, 30% Marb, 20% \$G and 30% \$B. Invest with confidence as his return on your investment will be significant!

# Lot 29



## LOT 29 - Vision Blueprint 0013

DOB: 1/12/20 | TATTOO: 0013 | REG. 19856111

Connealy Confidence Plus  
Woodhill Blueprint  
Woodhill Evergreen Z291-B233  
SA V Platinum 0010 #  
Vision Karama 819  
Vision Karama 430 #

Connealy Confidence 0100 #  
Elbanna of Conanga 1209  
Tehama Sierra Cut Z118  
Woodhill Evergreen U6-Z291  
SA V Pioneer 7301 #  
SA V Greystone Jannet 5345 #  
Vision Unanimous 1418 #  
Vision Karama 860

CED	BW	WW	YW	MILK	CW	MARB	REA	\$M	\$W	\$F	\$G	\$B	\$C
10	-0.2	67	115	20	36	0.60	0.68	68	70	72	50	122	226
BW	ADJ. WW	ADJ. YW	FAT	ADJ. IMF	ADJ. REA								
70	693	1,248	0.38	3.18	13.5								



Here's the attractive, calving-ease Blueprint son with worlds of class and phenotype to burn! He's a reliable, high maternal heifer bull sporting a 70 lb birth weight. His dam is an impressive full sister to Vision Emperial 6003 - the sire of the high-performance bulls featured as Lots 12-14. He offers a balanced EPD profile ranking in the Top 20% CED, 20% BW, 20% WW, 25% YW, 25% Doc, 25% \$M and 20% \$W.



Austin is a senior at Kansas State University and was a member of the 2020 National Champion Senior College Livestock Judging Team. His team won every multi species contest last fall and Austin was in the top ten individuals at every fall contest but one. Following graduation in May, Austin will be the Colorado Account Manager for Hubbard Feeds.



**Mill Brae Five Star 5045**

DOB: 1/20/15 | TATTOO: 5045 | REG. 18265275

Mill Brae Five Star produces good looking cattle with moderate birth, excellent growth, enhanced carcass value, maternal function, docility and newborn vigor. We purchased Five Star from Mill Brae Ranch – one of the most respected Angus operations in the country for their real-world cattle sense, stringent culling practices and maternal cow herd. Five Star was the high selling bull due to his impressive phenotype, performance, stoutness, docility, maternal lineage, structural and foot integrity! His individual genomics and progeny have earned him EPDs in the Top 25% WW, 10% YW, 4% SC, 10% Doc, 15% Claw, 15% CW, 20% Marb, 4% RE, 5% \$F, 10% \$G, 3% \$B and 10% \$C. Five Star sons have surpassed our expectations balancing moderate birth with impressive phenotype, high performance, improved foot quality and enhanced carcass merit.

Connealy Onward #  
Sitz Wisdom 481T #  
Sitz Elluna Elite 94P  
SydGen C C & 7 #  
Mill Brae CC&7 Joanie 2122  
Mill Brae 1407 Joanie 5139

Connealy Lead On #  
Altune of Conanga 6104  
Sitz New Design 349M #  
Sitz Elluna Elite 163M  
S A F Connection #  
SydGen Forever Lady 4087  
Bon View New Design 1407 #  
Mill Brae Joanie Bando 0189

**REFERENCE SIRE**

CED	BW	WW	YW	MILK	SC	DOC	HP	CW	MARB	RE	\$M	\$W	\$F	\$G	\$B	\$C
6	1.7	66	131	27	1.87	27	11.8	59	0.77	1.00	50	63	114	67	180	283

**Lot 30****LOT 30 - Vision Five Star 0028**

DOB: 1/18/20 | TATTOO: 0028 | REG. 19853862

Sitz Wisdom 481T #  
Mill Brae Five Star 5045  
Mill Brae CC&7 Joanie 2122  
S A V Resource 1441 #  
Vision Black Oak 512  
Vision Black Oak 711 #

Connealy Onward #  
Sitz Elluna Elite 94P  
SydGen C C & 7 #  
Mill Brae 1407 Joanie 5139  
Rito 707 of Ideal 3407 7075  
S A V Blackcap May 4136  
Mytty In Focus #  
Vision Black Oak 320

CED	BW	WW	YW	MILK	CW	MARB	REA	\$M	\$W	\$F	\$G	\$B	\$C
10	2.2	75	141	23	59	0.75	0.86	60	69	103	62	165	274

BW	ADJ. WW	ADJ. YW	FAT	ADJ. IMF	ADJ. REA
85	725	1,381	0.42	3.52	15.3



Balanced for real-world beef production, this Five Star son can positively impact every segment of the beef industry. He reads extremely well on paper recording individual ratios of weaning 106, yearling 105, IMF 101, ribeye 109 and fat 91 earning EPDs in the Top 20% CED, 10% WW, 3% YW, 1% SC, 10% HP, 1% Doc, 15% CW, 30% Marb, 15% RE, 20% \$W, 10% \$F, 15% \$G, 10% \$B and 10% \$C. You'll appreciate him even more in the pen – he's moderate and thick with a massive center body! His dam is a big barreled, easy keeping Resource daughter back to a Pathfinder that earned an impressive record with WR 10@102, YR 8@107, IMF 8@103, RE 8@108 and Fat 8@104.

**Lot 31****LOT 31 - Vision Five Star 0019**

DOB: 1/14/20 | TATTOO: 0019 | REG. 19853860

Sitz Wisdom 481T #  
Mill Brae Five Star 5045  
Mill Brae CC&7 Joanie 2122  
Koupal Advance 28 #  
Vision Erica Evalina 667  
AVF Erica Evalina 0773

Connealy Onward #  
Sitz Elluna Elite 94P  
SydGen C C & 7 #  
Mill Brae 1407 Joanie 5139  
Koupal Juneau 797 #  
Koupal Ebonette 734  
S A V Priority 7283 #  
Avf Erica Evalina 4560

CED	BW	WW	YW	MILK	CW	MARB	REA	\$M	\$W	\$F	\$G	\$B	\$C
6	2.5	78	140	31	64	0.37	0.57	62	83	102	38	140	244

BW	ADJ. WW	ADJ. YW	FAT	ADJ. IMF	ADJ. REA
92	752	1,418	0.57	2.39	15.5



Here's one impressive individual that'll have a lot of friends Monday, March 1st! He's loaded with performance and will deliver extra payweight at weaning, in the feedlot and on the rail. Backed by one of our favorite, high-performance Advance daughters that boasts a progeny record of WR 2@110, YR 2@110, RE 2@109 and Fat 2@146. He recorded individual performance ratios of weaning 110, yearling 107, ribeye 110 and fat 123. His daughters would make an impressive set of replacement females. His EPDs rank in the Top 4% WW, 4% YW, 1% SC, 15% Milk, 25% Claw, 30% Angle, 10% CW, 4% \$W, 10% \$F and 30% \$C.



# Lot 32



## LOT 32 - Vision Five Star 0018

DOB: 1/13/20 | TATTOO: 0018 | REG. 19853859

Sitz Wisdom 481T #

**Mill Brae Five Star 5045**

Mill Brae CC&amp;7 Joanie 2122

S A V 004 Predominant 4438 #

**Vision Evergreen 023**

ALC Evergreen C29R #

Connealy Onward #

Sitz Elluna Elite 94P

SydGen C C &amp; 7 #

Mill Brae 1407 Joanie 5139

S A V 8180 Traveler 004 #

S A V Emblynette 1182

K C F Bennett Coalition SCC #

Roth Miss Traveler 2095

CED	BW	WW	YW	MILK	CW	MARB	REA	\$M	\$W	\$F	\$G	\$B	\$C
-1	3.7	61	119	37	53	0.50	0.58	49	66	98	44	142	233
BW	ADJ. WW	ADJ. YW	FAT	ADJ. IMF	ADJ. REA								
88	813	1,517	0.47	3.24	15.4								



The heavy hitter in these Five Star sons boasting impressive individual ratios of weaning 119, yearling 115, ribeye 109 and fat 102 and produced by none other than one of our high-performance Evergreen females. He offers the extra performance and power to maximize your return on investment! His EPDs rank in the Top 20% YW, 2% Milk, 30% Doc, 25% CW, 30% \$W, 15% \$F and 30% \$B.

## LOT 33 - Vision Five Star 0006

DOB: 1/10/20 | TATTOO: 0006 | REG. 19853853

Sitz Wisdom 481T #

**Mill Brae Five Star 5045**

Mill Brae CC&amp;7 Joanie 2122

Buford AVF All Purpose 4700

**AVF Sara 7363**

AVF Sara 1027

Connealy Onward #

Sitz Elluna Elite 94P

SydGen C C &amp; 7 #

Mill Brae 1407 Joanie 5139

S A V Bismarck 5682 #

AVF Sara 9354 #

Schurrtop MC 2500 #

AVF Sara 4301

CED	BW	WW	YW	MILK	CW	MARB	REA	\$M	\$W	\$F	\$G	\$B	\$C
5	1.3	54	104	36	45	0.59	0.84	48	64	85	56	142	232
BW	ADJ. WW	ADJ. YW	FAT	ADJ. IMF	ADJ. REA								
80	789	1,477	0.45	4.23	14.2								



A lower-birth Five Star son that hit the ground running posting individual ratios of birth 95, weaning 115, yearling 112, IMF 121, ribeye 101 and fat 95. You can count on Five Star genetics to deliver when you need the extra pounds without sacrificing moderate birth, structural integrity, milk and fleshing ability in your cow herd. Need to freshen your genetic pool – he's one to consider.

## LOT 34 - Vision Five Star 0037

DOB: 1/25/20 | TATTOO: 0037 | REG. 19853864

Sitz Wisdom 481T #

**Mill Brae Five Star 5045**

Mill Brae CC&amp;7 Joanie 2122

S A V 004 Density 4336 #

**Vision Evergreen 203**

ALC Evergreen C29R #

Connealy Onward #

Sitz Elluna Elite 94P

SydGen C C &amp; 7 #

Mill Brae 1407 Joanie 5139

S A V 8180 Traveler 004 #

S A V May 7238

K C F Bennett Coalition SCC #

Roth Miss Traveler 2095

CED	BW	WW	YW	MILK	CW	MARB	REA	\$M	\$W	\$F	\$G	\$B	\$C
-2	3.6	68	116	20	51	0.50	0.94	53	57	92	52	144	240
BW	ADJ. WW	ADJ. YW	FAT	ADJ. IMF	ADJ. REA								
82	689	1,319	0.36	2.79	15.2								



An Evergreen female strikes again delivering a Five Star son with the extra pounds, performance and mass to add profitability to your program. His Density dam always impresses ranch visitors and gets her job done consistently recording a 367-day calving interval. Don't hesitate to retain his females – they'll do a great job! His EPDs rank in the Top 20% WW, 25% YW, 30% SC, 20% HP, 10% Claw, 30% Angle, 30% CW, 10% RE, 25% \$F and 30% \$B.

## LOT 35 - Vision Five Star 0007

DOB: 1/10/20 | TATTOO: 0007 | REG. 19853854

Sitz Wisdom 481T #

**Mill Brae Five Star 5045**

Mill Brae CC&amp;7 Joanie 2122

S A V Priority 7283 #

**AVF Erica Evalina 0773**

Avf Erica Evalina 4560

Connealy Onward #

Sitz Elluna Elite 94P

SydGen C C &amp; 7 #

Mill Brae 1407 Joanie 5139

S A V Final Answer 0035 #

S A V Blackcap May 5530 #

S A V Bismarck 5682 #

AVF Erica Evalina 6364

CED	BW	WW	YW	MILK	CW	MARB	REA	\$M	\$W	\$F	\$G	\$B	\$C
13	-0.7	44	72	31	26	0.36	0.75	62	58	62	42	105	198
BW	ADJ. WW	ADJ. YW	FAT	ADJ. IMF	ADJ. REA								
63	633	1,206	0.34	2.22	14.4								



A reliable heifer bull with the maternal function and genetic predisposition to make an outstanding group of replacement females. His double digit CED, negative BW EPD and light 75 lb birth weight make him an obvious choice to run on heifers. His EPDs rank in the Top 10% CED, 15% BW, 15% SC, 25% CEM, 15% Milk, 25% \$EN, 15% PAP and 25% RE.

Alex is a freshman at Concordia University in Seward, Nebraska majoring in Agricultural Science. Alex is a very active member of the Concordia Speech Team participating in virtual contests weekly. We are impressed with the innovative approach to agricultural education led by his advisor/professor Dr. Dennis Brink, formally professor at UNL Animal Science.





Lot 36



## LOT 36 - Vision Five Star 9053

DOB: 2/19/19 | TATTOO: 9053 | REG. 19581953

Sitz Wisdom 481T #

Mill Brae Five Star 5045

Mill Brae CC&amp;7 Joanie 2122

Visiontopline Royal Stockman

Vision Lady 432

Top Line Lady 9114

Connealy Onward #

Sitz Elluna Elite 94P

SydGen C C &amp; 7 #

Mill Brae 1407 Joanie 5139

Gambles Royal Flush

LaGrand Pride 7140

S A V Bismarck 5682 #

OBAR Gambles Lady 1056

CED	BW	WW	YW	MILK	CW	MARB	REA	\$M	\$W	\$F	\$G	\$B	\$C
4	4.8	62	118	24	52	0.62	0.85	52	44	104	58	162	262
BW	ADJ. WW	ADJ. YW	FAT	ADJ. IMF	ADJ. REA								
100	686	1,164	0.13	3.31	12.3								



Here's a Five Star son from our Lady family that is age advantaged with the extra size and maturity of a two-year old to provide more coverage and durability during the breeding season. Due to his marginal recipient dam, Lot 36 was specifically withheld from last year's sale and given the opportunity to continue to develop and express his genetic potential. You can be assured he'll deliver the added performance, dimension and phenotype that we've come to expect from our Lady cow family. His EPDs rank in the Top 20% YW, 25% CW, 15% RE, 10% \$F, 25% \$G, 10% \$B and 15% \$C.

VISION LADY 950  
FULL SISTER TO LOT 36

## BUBS Southern Charm AA31

DOB: 10/31/13 | TATTOO: AA31 | REG. 17853196

BUBS Southern Charm was always a favorite of visitors to ORigen due to his powerful stature, attractive design and fleshing ability. He descends from a long line of females with quality udder structure, high fertility, good feet and fleshing ability. Southern Charm ranks in the Top 25% WW, 3% SC, 10% Claw, 20% Angle, 15% Marb, 15% RE, 15% \$M, 25% \$W, 10% \$G, 30% \$B and 20% \$C. You'll appreciate these Southern Charm sons for their robust appearance, added performance and end-product merit.

BT Crossover 758N #  
**Silveiras Conversion 8064**  
 EXG Saras Dream S609 R3  
 Connealy Stimulus 8419 #  
**Hickory Hill Erica 009**  
 Hickory Hill Erica TA32

C A Future Direction 5321 #  
 BT Royal Pride 237G  
 BR Midland #  
 Exar Saras Dream 9809  
 H A Power Alliance 1025 #  
 Black Creeea of Conanga 5332  
 Morgans Direction 111 9901 #  
 Hickory Hill Erica RA58

## REFERENCE SIRE



CED	BW	WW	YW	MILK	SC	DOC	HP	CW	MARB	RE	\$M	\$W	\$F	\$G	\$B	\$C
4	3.2	67	112	26	1.95	9	8.5	40	0.88	0.84	70	68	78	66	144	257

Lot 37



## LOT 37 - Vision Southern Charm 0024

DOB: 1/16/20 | TATTOO: 0024 | REG. 19858427

Silveiras Conversion 8064

BUBS Southern Charm AA31

Hickory Hill Erica 009

Vision Unanimous 1418 #

Vision Evergreen 503 #

Vision Evergreen 202

BT Crossover 758N #

EXG Saras Dream S609 R3

Connealy Stimulus 8419 #

Hickory Hill Erica TA32

Visiontopline Royal Stockman

Vision Edella 665 #

S A V 004 Density 4336 #

ALC Evergreen C29R #

CED	BW	WW	YW	MILK	CW	MARB	REA	\$M	\$W	\$F	\$G	\$B	\$C
-4	5.8	71	120	26	46	0.88	0.66	65	62	79	62	141	248
BW	ADJ. WW	ADJ. YW	FAT	ADJ. IMF	ADJ. REA								
96	762	1,458	0.54	4.18	14								



A high performance, large scrotal Southern Charm son that's good footed, stout and three-dimensional. Impressive individual stats ratio'ing 111 weaning, 110 yearling and 120 IMF. Backed by a Pathfinder Evergreen that records WR 4@107 and YR 3@106 with a 365-day calving interval. His progeny will bank roll additional premiums with EPDs in the Top 15% WW, 20% YW, 20% Marb, 15% G and 30% \$C.



## LOT 38 - Vision Southern Charm 0025

DOB: 1/17/20 | TATTOO: 0025 | REG. 19858429

Silveiras Conversion 8064  
**BUBS Southern Charm AA31**  
 Hickory Hill Erica 009  
 Moore 902-Focus 008  
**Vision Missie 542**  
 Waf Missie 304

BT Crossover 758N #  
 EXG Saras Dream S609 R3  
 Connealy Stimulus 8419 #  
 Hickory Hill Erica TA32  
 Moore 602-Mytty I Focus 708B  
 Moore Style 708 #  
 B C Lookout 7024 #  
 WAF Missie 736

CED	BW	WW	YW	MILK	CW	MARB	REA	\$M	\$W	\$F	\$G	\$B	\$C
-2	2.8	60	103	25	42	0.53	0.51	53	58	75	45	120	209
BW	ADJ. WW	ADJ. YW	FAT	ADJ. IMF	ADJ. REA								
92	745	1,425	0.41	4.12	13.8								



A heavy-weight performer with the ability to keep mature cow size in check. You'll appreciate his extra body dimension, extension and marbling genetics that helped him ratio 109 weaning, 108 yearling and 118 IMF. He's one that can deliver the extra pounds and grade-ability without increasing frame size.

## LOT 39 - Vision Southern Charm 0047

DOB: 1/29/20 | TATTOO: 0047 | REG. 19858453

Silveiras Conversion 8064  
**BUBS Southern Charm AA31**  
 Hickory Hill Erica 009  
 Connealy Consensus 7229 #  
**Vision Karama 318**  
 Vision Karama 025

BT Crossover 758N #  
 EXG Saras Dream S609 R3  
 Connealy Stimulus 8419 #  
 Hickory Hill Erica TA32  
 Connealy Consensus #  
 Blue Lilly of Conanga 16  
 Double AA Old Post Bandolier  
 Vision Karama 534

CED	BW	WW	YW	MILK	CW	MARB	REA	\$M	\$W	\$F	\$G	\$B	\$C
2	2.7	54	90	31	32	0.83	0.55	69	63	71	62	133	242
BW	ADJ. WW	ADJ. YW	FAT	ADJ. IMF	ADJ. REA								
87	676	1,310	0.38	4.06	14.7								



A solid individual with the performance, maternal and carcass genetics to keep moving your herd forward. Backed by a real good Consensus dam, his daughters will have the ability to thrive in lower input production systems. His EPDs rank in the Top 15% Milk, 15% \$EN, 20% Marb, 25% \$M and 15% \$G.

## LOT 40 - Vision Conversation 0068

DOB: 3/1/20 | TATTOO: 0068 | REG. 19853873

SAC Conversation  
**Vision Conversation 7074**  
 Vision Karama 569  
 S A V Pedigree 4834  
**Vision Georgina 851**  
 Vision Georgina 249 #

Silveiras Conversion 8064  
 Laffins Farrah 0252 #  
 S A V Angus Valley 1867 #  
 Vision Karama 318  
 S A V Pioneer 7301 #  
 S A V Blackcap May 4136  
 S A V 707 Rito 9969 #  
 Vision Georgina 955

CED	BW	WW	YW	MILK	CW	MARB	REA	\$M	\$W	\$F	\$G	\$B	\$C
7	0.4	46	95	23	40	0.45	0.80	56	41	88	45	133	229
BW	ADJ. WW	ADJ. YW	FAT	ADJ. IMF	ADJ. REA								
75	640	Too Young	0.31	2.71	14.6								

A true calving-ease bull in an athletic, moderate and very attractive package. His sire - Vision Conversation 7074 - was one of the easiest calving bulls we've used natural service on our replacement heifers. He stamped his progeny with a very attractive look, extra top shape, square hip and sound structure. Be sure to check out the two Conversation heifers featured as Lots 68 and 69. Lot 40's EPDs rank in the Top 30% BW and 20% RE - a unique combination!

## LOT 41 - Vision Chaps 9081

DOB: 9/14/19 | TATTOO: 9081 | REG. 19857930

S A V Resource 1441 #  
**Ellingson Chaps 4095**  
 E A Blackcap 0360 #  
 Plattemere Weigh Up K360 #  
**Deer Valley Rita 3816**  
 Deer Valley Rita 0346

Rito 707 of Ideal 3407 7075  
 S A V Blackcap May 4136  
 M A S Wide Butt 6032  
 E A Blackcap 718  
 Sitz Upward 307R #  
 Barbara of Plattemere 337 #  
 S A V Bismarck 5682 #  
 G A R Objective 2345

CED	BW	WW	YW	MILK	CW	MARB	REA	\$M	\$W	\$F	\$G	\$B	\$C
11	1.1	53	102	26	33	0.13	0.83	54	55	74	34	108	194
BW	ADJ. WW	ADJ. YW	FAT	ADJ. IMF	ADJ. REA								
72	607	1,082	N/A	N/A	N/A								



Under low-input fall herd management, this 18 month-old calving-ease Chaps son offers a balanced EPD profile with outcross genetics for most of our customers. His dam is a full sister in blood to Select Sires bull Old Hickory. You can use him with confidence on your heifers with a light 72 lb birth weight and +11 CED ranking in the Top 15% for calving-ease. You can also appreciate his PAP and RE EPDs that fall in the Top 15%.

## LOT 42 - Vision Identified 0010

DOB: 1/11/20 | TATTOO: 0010 | REG. 19853856

Koupals B&B Identity #  
**Mill Brae Identified 4031**  
 Mill Brae Pro Blackcap 1092  
 S A V Pattern 6926  
**Vision Silver 841**  
 Vision Silver 112

Sitz Upward 307R #  
 B&B Erica 605 #  
 GAR-EGL Protege #  
 Mill Brae FL Blackcap 5002  
 S A V Platinum 0010 #  
 S A V Abigale 8547  
 Gambles Royal Flush  
 Vision Silver 825

CED	BW	WW	YW	MILK	CW	MARB	REA	\$M	\$W	\$F	\$G	\$B	\$C
10	-0.6	71	132	23	63	0.91	0.91	44	71	108	65	174	270
BW	ADJ. WW	ADJ. YW	FAT	ADJ. IMF	ADJ. REA								
67	855	1,524	0.55	4.69	15.4								



This carcass-improving Identified son with an impressive birth to yearling spread needs to be on your short list! Be sure to find him - you won't be disappointed. He's a performance machine with predictable calving-ease earning impressive ratios of 89 birth, 116 weaning, 115 yearling, 131 IMF, 109 ribeye and 123 fat. He offers up one of the strongest EPD profiles in the offering ranking in the Top 20% CED, 15% BW, 15% WW, 10% YW, 30% SC, 25% CEM, 10% CW, 15% Marb, 10% RE, 20% \$W, 5% \$F, 15% \$G, 5% \$B and 15% \$C.

## LOT 43 - Vision Identified 0002

DOB: 1/4/20 | TATTOO: 0002 | REG. 19853850

Koupals B&B Identity #  
**Mill Brae Identified 4031**  
 Mill Brae Pro Blackcap 1092  
 S A V Ten Speed 3022  
**Vision Evergreen 843**  
 Vision Evergreen 506

Sitz Upward 307R #  
 B&B Erica 605 #  
 GAR-EGL Protege #  
 Mill Brae FL Blackcap 5002  
 A A R Ten X 7008 SA #  
 S A V Madame Pride 1134 #  
 Vision Unanimous 1418 #  
 Vision Evergreen 202

CED	BW	WW	YW	MILK	CW	MARB	REA	\$M	\$W	\$F	\$G	\$B	\$C
5	0.6	59	103	17	31	0.95	0.70	60	55	75	68	143	245
BW	ADJ. WW	ADJ. YW	FAT	ADJ. IMF	ADJ. REA								
68	707	1,221	0.31	3.52	12.6								



A later maturing Identified son bred for end-product merit and an ideal choice for lower-input production systems with EPDs in the Top 10% HP, 30% \$EN, 15% Marb, 30% RE, 10% \$G, 30% \$B and 30% \$C.



**Musgrave 316 Stunner**

DOB: 2/19/16 | TATTOO: 1676 | REG. 18467508

Musgrave 316 Stunner was the lead off and high selling bull of Musgrave's 2017 sale. And for good reason – Stunner is phenotypically outstanding! He's proven to be a real calving-ease bull that will sire progeny with exceptional phenotype, structural soundness, added thickness and dimension in a lower birth package. Stunner progeny should carry plenty of demand. Stunner's EPDs rank in the Top 25% BW, 20% WW, 25% YW, 15% SC, 25% CEM, 10% CW, 25% Marb, 10% \$B and 10% \$C.

Connealy Capitalist 028 #

**LD Capitalist 316**

LD Dixie Erica 2053

MCATL Pure Product 903-55 #

**MCATL Blackbird 831-1378 #**

MCATL Blackbird 1378-573

SAV Final Answer 0035 #

Prides Pita of Conanga 8821

CA Future Direction 5321 #

LD Dixie Erica Oar 0853

Connealy Final Product #

MA Esta 55-252

Connealy Reflection #

MA Blackbird 573

**REFERENCE SIRE**

CED	BW	WW	YW	MILK	SC	DOC	HP	CW	MARB	RE	\$M	\$W	\$F	\$G	\$B	\$C
7	0.1	68	116	22	1.38	15	13.0	62	0.75	0.46	54	68	118	50	168	272

*Lot 44***LOT 44 - Vision Stunner 9080**

DOB: 9/13/19 | TATTOO: 9080 | REG. 19789744

LD Capitalist 316

**Musgrave 316 Stunner**

MCATL Blackbird 831-1378 #

Colburn Primo 5153

**Vision Lady 777**

Vision Lady 432

Connealy Capitalist 028 #

LD Dixie Erica 2053

MCATL Pure Product 903-55 #

MCATL Blackbird 1378-573

Dameron First Class

Silveiras Saras Dream 1339

Visiontopline Royal Stockman

Top Line Lady 9114

CED	BW	WW	YW	MILK	CW	MARB	REA	\$M	\$W	\$F	\$G	\$B	\$C
3	2.4	78	134	23	70	0.48	0.66	53	72	125	44	169	272

BW	ADJ. WW	ADJ. YW	FAT	ADJ. IMF	ADJ. REA
76	772	1,276	N/A	N/A	N/A



Want the super fancy look of quality in your next set of calves? Without a doubt, Lot 44 will deliver! A product of our Lady cow family known for producing stunning progeny with added thickness and dimension. Under low-input fall herd management, Lot 44 records impressive stats as his dam's first calf with a light 76 lb birth weight, 772 lb Adj. WW and 1,276 lb Adj. YW. As an 18 month-old fall bull, Lot 44 can give you more breeding season coverage. His grandam is our favorite Lady blending impeccable phenotype and class with massive performance. She posted impressive progeny records of WR 5@108, YR 5@106 and RE 9@106.



**VISION LADY 432**  
Grandam of Lots 44, 45, 48 & 49

Sarah Hedrick, Austin's girlfriend, is a senior at Iowa State University majoring in Food Science. She has become a big part of our family, cattle and farming operations. The first time Sarah showed a heifer was at the Nebraska State Fair where she led Alex's heifer to Reserve Champion Angus Female.





## LOT 45 - Vision Stunner 0059

DOB: 2/14/20 | TATTOO: 0059 | REG. 19856369

LD Capitalist 316  
Musgrave 316 Stunner  
MCATL Blackbird 831-1378 #  
Colburn Primo 5153  
Vision Lady 751  
Vision Lady 432

Connealy Capitalist 028 #  
LD Dixie Erica 2053  
MCATL Pure Product 903-55 #  
MCATL Blackbird 1378-573  
Dameron First Class  
Silveiras Saras Dream 1339  
Visiontopline Royal Stockman  
Top Line Lady 9114

CED	BW	WW	YW	MILK	CW	MARB	REA	\$M	\$W	\$F	\$G	\$B	\$C
11	1.5	64	98	19	35	0.51	0.43	72	64	78	40	118	225

BW	ADJ. WW	ADJ. YW	FAT	ADJ. IMF	ADJ. REA
78	600	1,125	0.36	2.45	13.5



A moderate-framed, gentle natured, heifer bull loaded with style and design. He's a full brother in blood to Lot 44 that can deliver a calf crop with the extra look and design you're looking for. His EPDs rank in the Top 15% CED, 30% WW, 30% HP, 30% Doc, 20% \$M and 30% \$W.

## Lot 46



## LOT 46 - Vision Stunner 0053

DOB: 2/8/20 | TATTOO: 0053 | REG. 19856399

LD Capitalist 316  
Musgrave 316 Stunner  
MCATL Blackbird 831-1378 #  
S A V Bismarck 5682 #  
Top Line Lady 9114  
OBAR Gambles Lady 1056

Connealy Capitalist 028 #  
LD Dixie Erica 2053  
MCATL Pure Product 903-55 #  
MCATL Blackbird 1378-573  
G A R Grid Maker #  
S A V Abigale 0451  
B C Marathon 7022 #  
Gambles Miss Famous 621

CED	BW	WW	YW	MILK	CW	MARB	REA	\$M	\$W	\$F	\$G	\$B	\$C
3	3.9	56	98	34	49	0.77	0.63	60	60	97	56	153	258

BW	ADJ. WW	ADJ. YW	FAT	ADJ. IMF	ADJ. REA
94	630	1,230	0.36	2.87	16



On paper he claims the largest RE scan in the offering and balances that with EPDs in the Top 25% Marb, 20% SC, 5% Milk, 15% \$F, 25% \$G, 20% \$B and 20% \$C. He's backed by our original Lady - Top Line Lady 9114 - a performance powerhouse recording WR 4@112, YR 4@110 and RE 8@105. He's a maternal brother to our popular Vision Lady 432 known for transmitting impressive performance and phenotype. This Stunner son will deliver a good lookin' set of calves with added thickness and shape.

## Lot 47



## LOT 47 - Vision Stunner 0046

DOB: 1/29/20 | TATTOO: 0046 | REG. 19856308

LD Capitalist 316  
Musgrave 316 Stunner  
MCATL Blackbird 831-1378 #  
Moore 902-Focus 008  
Vision Black Oak 871  
Vision Black Oak 512

Connealy Capitalist 028 #  
LD Dixie Erica 2053  
MCATL Pure Product 903-55 #  
MCATL Blackbird 1378-573  
Moore 602-Mytty I Focus 708B  
Moore Style 708 #  
S A V Resource 1441 #  
Vision Black Oak 711 #

CED	BW	WW	YW	MILK	CW	MARB	REA	\$M	\$W	\$F	\$G	\$B	\$C
14	-2.1	65	115	26	47	0.38	0.43	52	71	92	35	127	217

BW	ADJ. WW	ADJ. YW	FAT	ADJ. IMF	ADJ. REA
63	645	1,168	0.53	3.1	12.5



A calving-ease specialist with stunning phenotype and a stellar EPD profile ranking in the Top 4% CED, 3% BW, 25% WW, 25% YW, 5% SC, 15% CEM, 30% Doc, 20% \$W and 25% \$F. His grandam produced the impressive Five Star son featured as Lot 30 and boasts a progeny record of BR 3@97, IMF 3@101, RE 3@109 and Fat 3@91 with the Pathfinder dam behind her recording a WR 10@102, YR 8@107, IMF 8@103, RE 8@108 and Fat 8@104.

## Lot 48



## LOT 48 - Vision Bismarck 0011

DOB: 1/12/20 | TATTOO: 0011 | REG. 19857817

G A R Grid Maker #  
S A V Bismarck 5682 #  
S A V Abigale 0451  
Colburn Primo 5153  
Vision Lady 860  
Vision Lady 432

G D A R Traveler 044 #  
G A R Precision 2536  
Schoenes Fix It 826 #  
S A V Abigale 6062  
Dameron First Class  
Silveiras Saras Dream 1339  
Visiontopline Royal Stockman  
Top Line Lady 9114

CED	BW	WW	YW	MILK	CW	MARB	REA	\$M	\$W	\$F	\$G	\$B	\$C
7	1.1	66	100	16	42	-0.11	0.80	48	62	86	21	108	188

BW	ADJ. WW	ADJ. YW	FAT	ADJ. IMF	ADJ. REA
71	756	1,359	0.38	2.97	14.9



Sometimes a plan doesn't always come together - we used sexed heifer semen when we mated Bismarck to his dam. The mating still worked - Lot 48 is a good one! There's nothing extreme - just what you've come to expect in Vision bulls bred for a balance of traits. Phenotypically he's stout, attractively designed, big bodied and sound. He'll deliver a good lookin' set of calves and can be used with confidence on heifers!



## Lot 49



## LOT 49 - Vision Power Chip 0020

DOB: 1/14/20 | TATTOO: 0020 | REG. 19856094

EXAR Blue Chip 1877B  
**5T Power Chip 4790**  
 5T Miss Wix 8002  
 Colburn Primo 5153  
**Vision Lady 753**  
 Vision Lady 432

Dameron First Class  
 Greens Princess 1012  
 B C Matrix 4132 #  
 Circle Oak Miss Wix 4014  
 Dameron First Class  
 Silveiras Saras Dream 1339  
 Visiontopline Royal Stockman  
 Top Line Lady 9114

CED	BW	WW	YW	MILK	CW	MARB	REA	\$M	\$W	\$F	\$G	\$B	\$C
-2	3.9	70	111	22	43	0.61	0.53	27	58	82	49	131	197
BW	ADJ. WW	ADJ. YW	FAT	ADJ. IMF	ADJ. REA								
84	701	1,325	0.38	3.39	14.2								



He's attractive, sound made, gentle natured and backed by our Lady family. His sire, 5T Power Chip 4790 is known for producing cattle with great phenotype, extra natural dimension, athleticism and a super disposition with EPDs in the Top 25% CED, 30% WW, 20% HP, 20% Marb and 25% \$G. Lot 49 will deliver a fancy set of feeder cattle or replacement heifers. His WW EPD is among the Top 15% and he performed well on a young female.



**5T POWER CHIP 4790**  
 Sire of Lot 49

## Lot 50



## LOT 50 - Vision Fortress 0022

DOB: 1/15/20 | TATTOO: 0022 | REG. 19856092

Connealy Consensus #  
**KCF Bennett Fortress**  
 Thomas Patricia 9705  
 Visiontopline Royal Stockman  
**Vision Victoria 413**  
 Flag Victoria 90761

KMK Alliance 6595 187 #  
 Blinda of Conanga 004  
 S S Objective 1510 0126 #  
 Thomas Patricia 71138  
 Gambles Royal Flush  
 LaGrand Pride 7140  
 Vision Grid Maker 5014  
 SCR Victoria 4505

CED	BW	WW	YW	MILK	CW	MARB	REA	\$M	\$W	\$F	\$G	\$B	\$C
12	0.2	49	86	9	9	0.74	0.49	40	36	43	56	100	170
BW	ADJ. WW	ADJ. YW	FAT	ADJ. IMF	ADJ. REA								
86	710	1,355	0.38	4.08	14.5								



Our Fortress sons were a popular sire group last year for their moderate birth, extra performance and carcass value – unfortunately we only ended up with one for this offering. He's attractive, built right and backed by one of our more productive, carcass-improving females that boasts a progeny record of WR 4@101, YR 3@105, IMF 3@107, RE 3@109 and Fat 3@96. His EPDs rank in the Top 10% CED, 30% BW, 3% \$EN, 30% Marb and 25% \$G.



**KCF BENNETT FORTRESS**  
 Sire of Lot 50

## Lot 51



## LOT 51 - Vision First Round 0067

DOB: 2/26/20 | TATTOO: 0067 | REG. 19853872

VA First Round  
**Vision First Round 2545**  
 Bear MtnTM Forever Lady 8097  
 Koupal Advance 28 #  
**Vision Evergreen 610**  
 Vision Evergreen 407

Dameron First Class  
 R&C Keystone Lady 106K-810U  
 Bear Mtn Owyhee 5012  
 Bear Mtn Forever Lady 4086  
 Koupal Juneau 797 #  
 Koupal Ebonette 734  
 S A V Bismarck 5682 #  
 Vision Evergreen 202

CED	BW	WW	YW	MILK	CW	MARB	REA	\$M	\$W	\$F	\$G	\$B	\$C
5	2.5	71	118	27	58	0.29	0.91	50	74	102	42	144	237
BW	ADJ. WW	ADJ. YW	FAT	ADJ. IMF	ADJ. REA								
84	780	Too Young	0.35	2.04	15.3								



One of the younger bulls in our offering that's loaded with genetic potential – imagine this bull with two more months of growth and maturity knowing he's backed by one of our favorite cows – Vision Evergreen 610 – the dam of Lots 1 & 2. Take notice here with EPDs in the Top 15% WW, 20% YW, 30% PAP, 15% CW, 10% RE, 15% \$W, 10% \$F and 30% \$B. Ranch visitors always asked about his natural service sire, who saw limited use due to Brent's great AI conception rate. Vision First Round 2545 was an impressive individual – stout, big and sound footed with tremendous volume and dimension.



# Lot 52



## LOT 52 - Vision Advance 8092

DOB: 12/10/18 | TATTOO: 8092 | REG. 19737508

 Koupal Advance 28 #  
**Vision Advance 6009**  
 Vision Georgina 448 #

 Vision Cash 3414  
**Vision Ruths Rona 672**  
 SandPoint Ruths Rona 0749

 Koupal Juneau 797 #  
 Koupal Ebonette 734  
 Vision Brushpopper 2426  
 Vision Georgina 249 #  
 Barstow Cash #  
 Vision Miss Emulous 111  
 Garret's Nationwide 8001 #  
 Sandpoint Ruths Rona 6314

CED	BW	WW	YW	MILK	CW	MARB	REA	\$M	\$W	\$F	\$G	\$B	\$C
7	1.9	52	90	22	30	0.27	0.87	54	47	74	42	115	203
BW	ADJ. WW	ADJ. YW	FAT	ADJ. IMF	ADJ. REA								
82	716	1,124	0.09	3.46	12.4								

The final age advantaged bull in our offering that has matured into an impressive individual. You'll appreciate his attractive design, tremendous length of spine, extra top shape and natural dimension. He'll deliver an outstanding calf crop with the extra look, stretch and natural thickness to make buyer's sit up and take notice. His sire, Vision Advance 6009, served as one of our natural service sires for a number of years and his maternal grandsire was our \$19,000 sale topper in 2014.

## LOT 53 - Vision Advance 0075

DOB: 3/14/20 | TATTOO: 0075 | REG. 19853878

 Koupal Advance 28 #  
**Vision Advance 6009**  
 Vision Georgina 448 #  
 Vision Unanimous 1418 #  
**Vision Evergreen 624**  
 Vision Evergreen 202

 Koupal Juneau 797 #  
 Koupal Ebonette 734  
 Vision Brushpopper 2426  
 Vision Georgina 249 #  
 Visiontopline Royal Stockman  
 Vision Edella 665 #  
 S A V 004 Density 4336 #  
 ALC Evergreen C29R #

CED	BW	WW	YW	MILK	CW	MARB	REA	\$M	\$W	\$F	\$G	\$B	\$C
3	3.0	64	121	30	46	0.41	0.53	67	67	90	41	132	238
BW	ADJ. WW	ADJ. YW	FAT	ADJ. IMF	ADJ. REA								
92	619	Too Young	0.42	3.91	12.7								



A balanced-trait Advance son with tremendous maternal and marbling value. Backed by our Evergreen cow family reinforces his maternal strength making his daughters the keepin' kind. Lot 53 offers up four generations of high-marbling genetics with an individual 112 IMF ratio; dam 2@120 IMF, grandam 3@119 IMF and Pathfinder great grandam 18@103 IMF. His EPDs rank in the Top 30% WW, 20% YW, 30% HP, 20% Milk, 30% Claw, 10% Angle, 30% \$M, 25% \$W and 30% \$F.

## LOT 54 - Vision Advance 0080

DOB: 3/27/20 | TATTOO: 0080 | REG. 19853871

 Koupal Advance 28 #  
**Vision Advance 6009**  
 Vision Georgina 448 #  
 Moore 902-Focus 008  
**Vision Evergreen 645**  
 Vision Evergreen 308

 Koupal Juneau 797 #  
 Koupal Ebonette 734  
 Vision Brushpopper 2426  
 Vision Georgina 249 #  
 Moore 602-Mytty I Focus 708B  
 Moore Style 708 #  
 S A V 004 Density 4336 #  
 ALC Evergreen C29R #

CED	BW	WW	YW	MILK	CW	MARB	REA	\$M	\$W	\$F	\$G	\$B	\$C
7	1.4	53	105	37	46	0.38	0.69	76	68	91	43	134	250
BW	ADJ. WW	ADJ. YW	FAT	ADJ. IMF	ADJ. REA								
83	633	Too Young	0.33	Act 2.68	Act 13.1								



He's the youngest in the offering but quite possibly one of the better maternal breeding bulls in the making! Backed by three highly productive Evergreen dams with impressive progeny records – His Dam: WR 3@103, YR 2@105, IMF 2@106, RE 2@107 and Fat 2@121; Grandam: WR 5@104, YR 5@108 and Pathfinder Great Grandam: WR 7@103, YR 6@102, IMF 18@103, RE 18@102 and Fat 18@109. His EPDs rank in the Top 15% HP, 2% Milk, 15% Claw, 25% Angle, 30% RE, 10% \$M, 25% \$W, 25% \$F and 25% \$C. A lot of numbers, but they say generations of great cows.

## LOT 55 - Vision Advance 0070

DOB: 3/5/20 | TATTOO: 0070 | REG. 19853875

 Koupal Advance 28 #  
**Vision Advance 6009**  
 Vision Georgina 448 #  
 S A V Final Answer 0035 #  
**Vision Karama 230**  
 Vision Karama 860

 Koupal Juneau 797 #  
 Koupal Ebonette 734  
 Vision Brushpopper 2426  
 Vision Georgina 249 #  
 Sitz Traveler 8180 #  
 S A V Emulous 8145  
 SydGen On The Mark  
 Vision Karama 534

CED	BW	WW	YW	MILK	CW	MARB	REA	\$M	\$W	\$F	\$G	\$B	\$C
7	2.0	44	74	35	19	0.42	0.56	56	58	58	41	99	184
BW	ADJ. WW	ADJ. YW	FAT	ADJ. IMF	ADJ. REA								
94	607	Too Young	0.23	2.45	14.2								



Strong maternal genetics represented here with the bred-in ability to produce heavier-milking and more efficient replacement heifers – a rare combination. His genomically-enhanced EPDs rank in the Top 4% Milk and 15% \$EN. His nine-year old Final Answer dam offers more milk but is also a big-bodied, massive female that holds her flesh and condition year round with limited inputs.





**KCC1 Exclusive 116E**

DOB: 3/13/17 | TATTOO: 116E | REG. 3306064

Exclusive was the \$120,000 1/2 interest, high selling Simmental bull of 2018 produced by Kearns Cattle Co., Rushville, Nebraska. He's been admired by cattlemen nationwide for his big foot, heavy structure, flexibility, center dimension, natural shape and expression. Exclusive progeny are consistent in regards to a practical mature size, improved foot quality, skeletal integrity, extra three-dimensional mass and their ability to forage and gain efficiently.

MR NLC Upgrade U8676  
MR TR Hammer 308A  
SVF/HS Expecting A Dream

CLO LTS Entourage 72T

TKCC Victoria 57A

Ford RJ Dolly Y83

Ellington Legacy M229  
MS NLC Mojo S6119 B  
CNS Dream On L186  
SVF/NJC Expectation N206  
CNS Dream On L186  
WAR Diva M704  
WAGR Driver 706T  
Harkers Stars P117

CED	BW	WW	YW	MILK	MWW	STAY	DOC
13.6	0.4	79.8	117.0	17.4	57.3	14.0	9.2

CW	YG	MARB	REA	API	TI
18.4	-0.57	0.23	1.12	137.8	83.4

**REFERENCE SIRE***Lot 56***LOT 56 - Vision Exclusive H060**

DOB: 2/15/20 | TATTOO: H060 | REG. PB Simmental

MR TR Hammer 308A

KCC1 Exclusive 116E

TKCC Victoria 57A

W/C Executive Order 8543B

WRS Hooked On You E703

RRJS Miss Upgrade 708Y

MR NLC Upgrade U8676  
SVF/HS Expecting A Dream  
CLO LTS Entourage 72T  
Ford RJ Dolly Y83

W/C United 956Y  
Miss Werning KP 8543U  
MR NLC Upgrade U8676  
LRS MS In Dew Time 861U

BW	ADJ. WW	ADJ. YW	FAT	ADJ. IMF	ADJ. REA
84	749	1426	0.21	Act 1.96	Act 16.5

An elite purebred Simmental bull that is very deserving of your consideration. Cattlemen regardless which breed you're partial to – this is a high-quality herd sire prospect one can build a cow herd around. He's bred to exhibit more shape, muscle and body dimension in an attractive, soft-made package – and it shows from every angle! And he's got all the extras to go with it – a practical mature size, improved foot shape and design, an athletic gate, a super disposition and cow power behind him! His dam is a highly fertile, easy fleshing and powerful Executive Order daughter with tremendous length, natural width and dimension, structural integrity and superb mothering ability. Lot 56 comes highly recommended!

*Lot 57***LOTS 57-58**

MR TR Hammer 308A

KCC1 Exclusive 116E

TKCC Victoria 57A

Vision Unanimous 1418 #

Vision Erica 636

Vision Erica 854

MR NLC Upgrade U8676  
SVF/HS Expecting A Dream  
CLO LTS Entourage 72T  
Ford RJ Dolly Y83

Visiontopline Royal Stockman  
Vision Edella 665 #  
Connealy Formation 60C  
Vision Erica 760

**LOT 57 - Vision Exclusive H056**

DOB: 2/9/20 | TATTOO: H056 | REG. 1/2 SimAngus

BW	ADJ. WW	ADJ. YW	FAT	ADJ. IMF	ADJ. REA
88	645	1260	0.17	Act 2.61	Act 15.3

**LOT 58 - Vision Exclusive H042**

DOB: 1/27/20 | TATTOO: H042 | REG. 1/2 SimAngus

BW	ADJ. WW	ADJ. YW	FAT	ADJ. IMF	ADJ. REA
86	672	1301	0.15	Act 2.72	Act 13.3

Get just the right amount of hybrid vigor in Lots 57 & 58 – two 1/2 SimAngus bulls that are full brothers in blood. Their Unanimous dams are super attractive, moderate, big bodied and easy fleshing females. These bulls are bred to deliver the quality you expect with extra hybrid vigor and added thickness to produce those black, fancy, market topping feeder cattle.

OUR SALE IS A PROMISE OF *Quality*  
WRAPPED IN AN *Experience!*  
WE LOOK FORWARD TO SEEING YOU.



*Lot 59*

**LOT 59 - Vision Blanche 037**

DOB: 1/18/20 | TATTOO: 037 | REG. 19858397

 Basin Payweight 1682 #  
**Poss Maverick**  
 Poss Pride 5163  
 WK Easy  
**Vision Blanche 314 #**  
 Vision Blanche 864 #

 Basin Payweight 006S #  
 21AR O Lass 7017  
 Poss Hoover Dam 2509  
 Poss Pride 9526  
 H A R B Rick O'Shay 838 J H  
 WK Sandy 2421  
 Connealy Formation 60C  
 Vision Blanche 425

CED	BW	WW	YW	MILK	CW	MARB	REA	\$M	\$W	\$F	\$G	\$B	\$C
5	1.2	64	122	41	60	0.92	0.70	46	77	103	63	167	263

BW	ADJ. WW	ADJ. YW
79	662	952



Definitely a sale feature that's all about quality, longevity and sustainability! Her genomically enhanced EPDs are balanced across the board and elite ranking in the Top 25% WW, 15% YW, 1% Milk, 10% Angle, 15% CW, 20% Marb, 10% \$W, 10% \$F, 15% \$G, 10% \$B and 15% \$C. The fertility and longevity of the dams behind her are exceptional with her dam recording WR 6@104, YR 6@103, RE 3@102 and Fat 3@112 while her Pathfinder grandam still in production has earned a BR 11@98, WR 11@100, YR 11@101, IMF 8@104 and Fat 8@107 both with 366 and 365-day calving intervals.

*Lot 60*

**LOT 60 - Vision Evergreen 046**

DOB: 1/22/20 | TATTOO: 046 | REG. 19858348

 Basin Payweight 1682 #  
**Poss Maverick**  
 Poss Pride 5163  
 Moore 902-Focus 008  
**Vision Evergreen 541**  
 Vision Evergreen 306

 Basin Payweight 006S #  
 21AR O Lass 7017  
 Poss Hoover Dam 2509  
 Poss Pride 9526  
 Moore 602-Mytty I Focus 708B  
 Moore Style 708 #  
 S A V 004 Density 4336 #  
 ALC Evergreen C29R #

CED	BW	WW	YW	MILK	CW	MARB	REA	\$M	\$W	\$F	\$G	\$B	\$C
6	0.0	67	115	24	52	0.83	0.46	51	70	95	55	150	246

BW	ADJ. WW	ADJ. YW
72	627	942



A valuable breeding piece in this Maverick daughter that offers unlimited earning potential with EPDs ranking in the Top 25% BW, 20% WW, 25% YW, 20% SC, 15% PAP, 30% CW, 25% Marb, 15% \$W, 20% \$F, 30% \$G, 25% \$B and 30% \$C. She's backed by our time-tested, productive and proven Evergreen cow family.

*Lot 61*

**LOT 61 - Vision Pride 042**

DOB: 1/19/20 | TATTOO: 042 | REG. 19858306

 Basin Payweight 1682 #  
**Poss Maverick**  
 Poss Pride 5163  
 Moore 902-Focus 008  
**Vision Pride 572**  
 SandPoint Pride 1359

 Basin Payweight 006S #  
 21AR O Lass 7017  
 Poss Hoover Dam 2509  
 Poss Pride 9526  
 Moore 602-Mytty I Focus 708B  
 Moore Style 708 #  
 Connealy Consensus 7229 #  
 SandPoint Pride 4196

CED	BW	WW	YW	MILK	CW	MARB	REA	\$M	\$W	\$F	\$G	\$B	\$C
3	0.6	62	107	30	51	1.05	0.51	59	70	92	69	161	268

BW	ADJ. WW	ADJ. YW
78	580	868



A genetic treasure designed to be a valuable addition to any breeding program with EPDs in the Top 30% WW, 15% Milk, 4% Claw, 1% Angle, 30% PAP, 30% CW, 10% Marb, 15% \$W, 25% \$F, 10% \$G, 15% \$B and 15% \$C. Her Consensus 7229 grandam produced our elite Maverick son featured as Lot 3. Give your herd a boost with this high marbling, high maternal female!



Lot 62

**LOT 62 - Vision Georgina Afton 079**

DOB: 2/24/20 | TATTOO: 079 | REG. 19854424

SAV Platinum 0010 #

SAV Pattern 6926

SAV Abigale 8547

SAV Bismarck 5682 #

Vision Georgina Afton 341

Vision Georgina Afton 935

SAV Pioneer 7301 #

SAV Greystone Jannet 5345 #

SAV Net Worth 4200 #

SAV Abigale 8213 #

GAR Grid Maker #

SAV Abigale 0451

Boyd On Target 1083 #

Vision Georgina Afton 648

CED	BW	WW	YW	MILK	CW	MARB	REA	\$M	\$W	\$F	\$G	\$B	\$C
6	2.6	62	101	26	35	0.41	0.44	66	67	70	38	107	205

BW	ADJ. WW	ADJ. YW
82	624	912



Establish a 'Pattern' for a great cow herd. We selected Pattern in the 2017 Schaff Angus Valley sale for his maternal bloodlines that have been a mainstay in the Angus breed – Traveler 8180, Final Answer, 004, EXT and Net Worth. His daughters are the cowman's kind and consistently made like Lot 62 – attractive and growthy with a bold, maternal rib shape. In production, you'll appreciate their near perfect udders. Lot 62's EPDs rank in the Top 30% WW, 30% \$EN, 30% \$M and 20% \$W.



**SAV PATTERN 6926**  
SIRE OF LOT 62

Lot 63

**LOT 63 - Vision Blanche 041**

DOB: 1/19/20 | TATTOO: 041 | REG. 19854412

SAV Platinum 0010 #

Vision Imperial 6003

Vision Karama 430 #

SAV International 2020 #

Vision Blanche 606

Vision Blanche 864 #

SAV Pioneer 7301 #

SAV Greystone Jannet 5345 #

Vision Unanimous 1418 #

Vision Karama 860

SAV Harvester 0338 #

SAV Emblynette 5483 #

Connealy Formation 60C

Vision Blanche 425

CED	BW	WW	YW	MILK	CW	MARB	REA	\$M	\$W	\$F	\$G	\$B	\$C
6	1.3	68	115	28	53	0.39	0.14	64	75	85	28	113	211

BW	ADJ. WW	ADJ. YW
80	678	972



Genetically designed for performance, maternal value and convenience traits. We like the result and are confident she'll be a favorite for many on March 1st. With more Imperial daughters in production this spring, we can say we're impressed with their calving-ease, mothering ability, udder quality and teat size. Her EPDs rank in the Top 15% WW, 25% YW, 25% SC, 25% Milk, 25% CW and 10% \$W. Her Pathfinder grandam still in production has earned a BR 11@98, WR 11@100, YR 11@101, IMF 8@104 and Fat 8@107 with a 365-day calving interval.

Lot 64

**LOT 64 - Vision Black Oak 023**

DOB: 1/13/20 | TATTOO: 023 | REG. 19854407

SAV Platinum 0010 #

Vision Imperial 6003

Vision Karama 430 #

Moore 902-Focus 008

Vision Black Oak 573

Vision Black Oak 142

SAV Pioneer 7301 #

SAV Greystone Jannet 5345 #

Vision Unanimous 1418 #

Vision Karama 860

Moore 602-Mytty I Focus 708B

Moore Style 708 #

Vision Tradition S28

Vision Black Oak 518

CED	BW	WW	YW	MILK	CW	MARB	REA	\$M	\$W	\$F	\$G	\$B	\$C
9	0.5	65	107	24	43	0.17	0.12	66	71	71	19	90	183

BW	ADJ. WW	ADJ. YW
71	608	853



A true representation of a female bred for 'Quality'! You'll appreciate her impressive phenotype, structural and foot integrity, femininity and bold, maternal rib shape. Our Imperial daughters in production are nothing short of impressive and we're confident Lot 64 won't disappoint. Her EPDs rank in the Top 25% CED, 25% WW, 25% SC, 30% \$M and 15% \$W.



## LOT 65 - Vision Eileen Bar 008

DOB: 1/8/20 | TATTOO: 008 | REG. 19854402

S A V Platinum 0010 #

**Vision Empirical 6003**

Vision Karama 430 #

Sitz Investment 660Z #

**T K Eileen Bar B421**

T K Eileen Bar T257

S A V Pioneer 7301 #

S A V Greystone Jannet 5345 #

Vision Unanimous 1418 #

Vision Karama 860

Connealy Final Product #

Sitz Ellunas Elite 656T #

SydGen Bullet

T K Eileen Bar R328

CED	BW	WW	YW	MILK	CW	MARB	REA	\$M	\$W	\$F	\$G	\$B	\$C
2	1.9	74	120	23	57	0.48	0.12	64	76	92	32	124	225

BW	ADJ. WW	ADJ. YW
83	591	922



A balanced EPD profile with a fresh genetic pedigree that offers more mating flexibility and diversity. Her EPDs rank in the Top 10% WW, 20% YW, 20% SC, 25% CEM, 30% Doc, 20% CW, 10% \$W and 25% \$F.

## LOT 66 - Vision Silver 058

DOB: 1/27/20 | TATTOO: 058 | REG. 19919859

Sitz Wisdom 481T #

**Mill Brae Five Star 5045**

Mill Brae CC&amp;7 Joanie 2122

Connealy Formation 60C

**Vision Silver 934**

Vision Silver 640

Connealy Onward #

Sitz Elluna Elite 94P

SydGen C C &amp; 7 #

Mill Brae 1407 Joanie 5139

S A V 8180 Traveler 004 #

Black Crane of Conanga 204

Boyd On Target 1083 #

Vision Silver 257

CED	BW	WW	YW	MILK	CW	MARB	REA	\$M	\$W	\$F	\$G	\$B	\$C
7	0.7	52	103	25	45	0.40	0.70	45	49	99	42	140	227

BW	ADJ. WW	ADJ. YW
74	607	919



Her dam continues to be a model of longevity and maternal function in our program with her 11th calf on the ground and a solid progeny record of BR 10@100, WR 10@101 and YR 10@102 with a 366-day calving interval. Her 2019 full sister is an outstanding first calf heifer. Lot 66 will help you establish a baseline for longevity and sustainability in your cow herd!

# Lot 67



## LOT 67 - Vision Pride 078

DOB: 2/23/20 | TATTOO: 078 | REG. 19854423

S A V Ten Speed 3022

**Vision Overdrive 7001**

Vision Proud Lassie 531 #

S A V Angus Valley 1867 #

**Vision Pride 565**

Vision Pride 392

A A R Ten X 7008 SA #

S A V Madame Pride 1134 #

SITZ Logic Y46 #

Vision Proud Lassie 911#

S A V Iron Mountain 8066 #

S A V May 2397 #

Connealy Confidence 0100 #

SandPoint Pride 1290

CED	BW	WW	YW	MILK	CW	MARB	REA	\$M	\$W	\$F	\$G	\$B	\$C
17	-3.0	41	84	30	19	0.58	0.23	69	54	61	43	103	203

BW	ADJ. WW	ADJ. YW
73	586	866



Tremendous calving-ease, maternal value and function in this attractive Overdrive daughter with EPDs in the Top 1% CED, 1% BW, 25% HP, 10% CEM, 15% Milk, 15% \$EN, 10% PAP and 25% \$M. First developing a strong maternally-based cow herd creates unlimited breeding potential. Take advantage of this genetic opportunity! Overdrive's first daughters in production are exceeding our expectations with their calving-ease, mothering ability, superb udder quality and fleshing ability.

# Lot 68



## LOT 68 - Vision Blackcap 066

DOB: 2/11/20 | TATTOO: 066 | REG. 19854421

SAC Conversation

**Vision Conversation 7074**

Vision Karama 569

Ellingson Chaps 4095

**Vision Blackcap 803**

Vision Blackcap 604

Silveras Conversion 8064

Laffins Farrah 0252 #

S A V Angus Valley 1867 #

Vision Karama 318

S A V Resource 1441 #

E A Blackcap 0360 #

S A V Platinum 0010 #

Vision Blackcap 426

CED	BW	WW	YW	MILK	CW	MARB	REA	\$M	\$W	\$F	\$G	\$B	\$C
6	0.0	53	100	22	29	0.20	0.74	66	50	63	34	97	192

BW	ADJ. WW	ADJ. YW
68	595	Too Young

A super attractive Conversation heifer that offers up so much good! Her sire was one of the easiest-calving, natural service sires we've used on our replacement heifers with EPDs in the Top 25% BW, 30% SC, 30% Milk, 20% RE, 30% \$M and 30% \$G. Her grandam produced the Capitalist heifer featured as Lot 74. Her EPDs rank in the Top 25% BW, 25% SC, 25% \$EN, 10% Claw, 15% Angle, 30% RE and 30% \$M.



**VISION CONVERSATION 7074**  
SIRE OF LOTS 68 & 69



Lot 69

**LOT 69 - Vision Evergreen 062**

DOB: 2/3/20 | TATTOO: 062 | REG. 19854419

SAC Conversation  
**Vision Conversation 7074**  
 Vision Karama 569

Sitz Investment 660Z #  
**Vision Evergreen 780**  
 Vision Evergreen 505

Silveiras Conversion 8064  
 Laffins Farrah 0252 #  
 S A V Angus Valley 1867 #  
 Vision Karama 318  
 Connealy Final Product #  
 Sitz Ellunas Elite 656T #  
 Vision Unanimous 1418 #  
 Vision Evergreen 022

CED	BW	WW	YW	MILK	CW	MARB	REA	\$M	\$W	\$F	\$G	\$B	\$C
9	-2.0	62	111	19	30	0.63	0.44	69	64	63	47	110	212
BW	ADJ. WW	ADJ. YW	HDSOK										
62	632	907											

These Conversation heifers are so good-lookin' and complete. Her quality phenotype, great EPD profile and fresh genetics offer unlimited mating possibilities to fit any target market. Backed by our productive Evergreen family, you can expect great things to come. Her EPDs rank in the Top 25% CED, 3% BW, 30% WW, 30% YW, 25% SC, 30% \$EN, 30% Doc, 10% PAP, 25% \$M and 30% \$W.

Lot 70

**LOT 70 - Vision Evergreen 030**

DOB: 1/16/20 | TATTOO: 030 | REG. 19859400

Connealy Consensus 7229 #  
**Mill Bar Hickok 7242**  
 Mill Bar Bemindful Maid 6304

S A V Pattern 6926  
**Vision Evergreen 854**  
 Vision Evergreen 541

Connealy Consensus #  
 Blue Lilly of Conanga 16  
 S A V Final Answer 0035 #  
 Mill Bar Lady DI 3400  
 S A V Platinum 0010 #  
 S A V Abigale 8547  
 Moore 902-Focus 008  
 Vision Evergreen 306

CED	BW	WW	YW	MILK	CW	MARB	REA	\$M	\$W	\$F	\$G	\$B	\$C
10	-0.4	59	102	28	32	0.49	0.49	72	71	67	40	107	211
BW	ADJ. WW	ADJ. YW	HDSOK										
72	636	919											

Bred for maternal excellence, this Hickok daughter will be a valued addition to any breeding program. Her sire Hickok is a balanced-trait, maternally-oriented, calving-ease bull with super phenotype that ranked #1 for ABS sales in 2018, 2019 and 2020. She ties together the best maternal genetics in our program – the Evergreen family and the strong maternal influence of our Moore 902-Focus 008 and S A V Pattern 6926 daughters. Her EPDs rank in the Top 20% CED, 15% BW, 10% HP, 25% Milk, 3% PAP, 15% \$M and 15% \$W.



**MILL BAR HICKOK 7242**  
 SIRE OF LOTS 70-72

Lot 71

**LOT 71 - Vision Sara 031**

DOB: 1/16/20 | TATTOO: 031 | REG. 19859342

Connealy Consensus 7229 #  
**Mill Bar Hickok 7242**  
 Mill Bar Bemindful Maid 6304

Moore 902-Focus 008  
**Vision Sara 873**  
 AVF Sara 0364

Connealy Consensus #  
 Blue Lilly of Conanga 16  
 S A V Final Answer 0035 #  
 Mill Bar Lady DI 3400  
 Moore 602-Mytty I Focus 708B  
 Moore Style 708 #  
 S A V Priority 7283 #  
 AVF Sara 1010

CED	BW	WW	YW	MILK	CW	MARB	REA	\$M	\$W	\$F	\$G	\$B	\$C
13	-0.2	55	97	25	32	0.42	0.47	80	64	73	37	110	223
BW	ADJ. WW	ADJ. YW	HDSOK										
68	646	953											

This one definitely fits the type and kind one would expect of Hickok's females – moderate and well-balanced with a bold maternal rib shape and extra natural thickness. She's a double-digit calving-ease female with unlimited production possibilities and earning potential with EPDs in the Top 5% CED, 20% BW, 10% \$EN, 10% Doc, 15% Claw, 15% PAP, 5% \$M and 30% \$W.



## LOT 72 - Vision Silver 050

DOB: 1/23/20 | TATTOO: 050 | REG. 19859399

Connealy Consensus 7229 #  
**Mill Bar Hickok 7242**  
 Mill Bar Bemindful Maid 6304  
 Moore 902-Focus 008  
**Vision Silver 865**  
 Vision Silver 047

Connealy Consensus #  
 Blue Lilly of Conanga 16  
 S A V Final Answer 0035 #  
 Mill Bar Lady DI 3400  
 Moore 602-Mytty I Focus 708B  
 Moore Style 708 #  
 Connealy Formation 60C  
 Vision Silver 640

CED	BW	WW	YW	MILK	CW	MARB	REA	\$M	\$W	\$F	\$G	\$B	\$C
8	1.2	46	82	29	9	0.62	0.36	65	52	45	46	91	183
BW	ADJ. WW	ADJ. YW											
74	598	846											



The track record of Vision females being productive and valued-additions to their new homes is impressive. You can buy with confidence, knowing these females have been genetically designed and developed right to add quality and value to the next generation. This Hickok daughter offers calving-ease, improved foot quality and EPDs in the Top 5% HP and 20% Milk.

## LOT 73 - Vision Betty 073

DOB: 2/13/20 | TATTOO: 073 | REG. 19857932

Poss Achievement  
**Sitz Accomplishment 720F**  
 Sitz Barabamere Nell 166D  
 TopLine Vision Fly Over 1395  
**Vision Betty 307**  
 Vision Betty 115

Poss Lasting Impact 3118  
 Poss Erica 327  
 S A V Resource 1441 #  
 Sitz Barabamere Nell 14Y  
 Silveiras Style 9303  
 Top Line Ellie 0635  
 Mohnen Brushpopper 295 #  
 Vision Betty S122

CED	BW	WW	YW	MILK	CW	MARB	REA	\$M	\$W	\$F	\$G	\$B	\$C
5	1.7	49	91	19	32	0.82	0.70	58	44	77	62	139	238
BW	ADJ. WW	ADJ. YW											
80	559	821											



An Accomplishment female infused with added carcass value that will thrive and perform in lower-input production systems with EPDs ranking in the Top 25% SC, 15% \$EN, 30% Marb and 20% \$G.

Lot 74



## LOT 74 - Vision Blackcap 001

DOB: 1/1/20 | TATTOO: 001 | REG. 19858202

Connealy Capitalist 028 #  
**LD Capitalist 316**  
 LD Dixie Erica 2053  
 S A V Platinum 0010 #  
**Vision Blackcap 604**  
 Vision Blackcap 426

S A V Final Answer 0035 #  
 Prides Pita of Conanga 8821  
 C A Future Direction 5321 #  
 LD Dixie Erica Oar 0853  
 S A V Pioneer 7301 #  
 S A V Greystone Jannet 5345 #  
 Visiontopline Royal Stockman  
 Vision Blackcap 050

CED	BW	WW	YW	MILK	CW	MARB	REA	\$M	\$W	\$F	\$G	\$B	\$C
7	1.2	68	102	25	48	0.51	0.61	88	79	83	44	127	253
BW	ADJ. WW	ADJ. YW											
66	597	890											



A unique breeding piece rich in maternal value and traits that can ensure the profitability, longevity and sustainability of one's cow herd. She compliments her 1% \$M EPD with EPDs also in the Top 15% WW, 30% HP, 25% CEM, 30% \$EN, 10% Claw, 20% Angle, 10% PAP, 10% \$W and 25% \$C. LD Capitalist 316 has produced some outstanding bulls and heifers for us and Lot 74 is no exception.

Lot 75



## LOT 75 - Vision Silver 024

DOB: 1/13/20 | TATTOO: 024 | REG. 19858175

Connealy Capitalist 028 #  
**LD Capitalist 316**  
 LD Dixie Erica 2053  
 Moore 902-Focus 008  
**Vision Silver 857**  
 Vision Silver 322

S A V Final Answer 0035 #  
 Prides Pita of Conanga 8821  
 C A Future Direction 5321 #  
 LD Dixie Erica Oar 0853  
 Moore 602-Mytty I Focus 708B  
 Moore Style 708 #  
 S A V Bismarck 5682 #  
 Vision Silver 802 #

CED	BW	WW	YW	MILK	CW	MARB	REA	\$M	\$W	\$F	\$G	\$B	\$C
5	1.0	66	116	26	45	1.05	0.39	63	71	85	62	148	255
BW	ADJ. WW	ADJ. YW											
68	669	930											



By now you've noticed that the quality runs extremely deep in these 20 sale heifers! We're proud to stake our reputation on their ability to perform and be a profitable investment for their new owners. The upside potential on this Capitalist heifer is tremendous with EPDs in the Top 20% WW, 25% YW, 4% CEM, 1% PAP, 10% Marb, 15% \$W, 20% \$G, 25% \$B and 25% \$C.



Lot 76

**LOT 76 - Vision Blackcap 039**

DOB: 1/19/20 | TATTOO: 039 | REG. 19856345

LD Capitalist 316  
**Musgrave 316 Stunner**  
 MCATL Blackbird 831-1378 #  
 S A V Pedigree 4834  
**Vision Blackcap 805**  
 Vision Blackcap 426

Connealy Capitalist 028 #  
 LD Dixie Erica 2053  
 MCATL Pure Product 903-55 #  
 MCATL Blackbird 137-8573  
 S A V Pioneer 7301 #  
 S A V Blackcap May 4136  
 Visiontopline Royal Stockman  
 Vision Blackcap 050

CED	BW	WW	YW	MILK	CW	MARB	REA	\$M	\$W	\$F	\$G	\$B	\$C
9	0.1	61	116	33	44	0.69	0.60	66	74	86	52	138	245

BW	ADJ. WW	ADJ. YW
68	652	934



Stunning phenotype in this Blackcap heifer genetically designed to be a balanced-trait female with worlds of earning potential! Her EPDs rank in the Top 25% CED, 25% BW, 25% YW, 20% HP, 10% Milk, 10% PAP, 30% \$M, 10% \$W and 30% \$C. Grandam records a 364-day calving interval and has been the no hassle kind of female we all appreciate!

Lot 77

**LOT 77 - Vision Evergreen 047**

DOB: 1/22/20 | TATTOO: 047 | REG. 19858470

Silveiras Conversion 8064  
**BUBS Southern Charm AA31**  
 Hickory Hill Erica 009  
 S A V 004 Predominant 4438 #  
**Vision Evergreen 022**  
 ALC Evergreen C29R #

BT Crossover 758N #  
 EXG Saras Dream S609 R3  
 Connealy Stimulus 8419 #  
 Hickory Hill Erica TA32  
 S A V 8180 Traveler 004 #  
 S A V Emblynette 1182  
 K C F Bennett Coalition SCC #  
 Roth Miss Traveler 2095

CED	BW	WW	YW	MILK	CW	MARB	REA	\$M	\$W	\$F	\$G	\$B	\$C
5	1.8	55	92	17	34	0.55	0.66	43	47	77	48	126	206

BW	ADJ. WW	ADJ. YW
91	634	885



She's quite the charmer – super attractive, feminine and classy! Take advantage of this opportunity to capitalize on our highly productive Evergreen family which has been the backbone of our program. Her Predominant dam is an impressive female while her Pathfinder grandam earned a lifetime progeny record of WR 7@103, YR 6@102, IMF 18@103, RE 18@102 and Fat 18@109.

Lot 78

**LOT 78 - Vision Honey Bear 090**

DOB: 3/13/20 | TATTOO: 090 | REG. 19856158

B C Lookout 7024 #  
**PVF Surveillance 4129**  
 PVF Ellen 9100  
 WAF Grid Topper 7110  
**WAF Honey Bear 251 #**  
 Waf Lass 042

O C C Legend 616L  
 Gibbet Hill Mignonne E37  
 PVF ALL PAYDAY 729 #  
 Hyline Ellen 410  
 TC Grid Topper 355 #  
 DDA Barbara 0520  
 S A V Bismarck 5682 #  
 WAF Lass 811

CED	BW	WW	YW	MILK	CW	MARB	REA	\$M	\$W	\$F	\$G	\$B	\$C
4	2.6	58	91	20	22	0.13	0.32	59	52	60	23	83	167

BW	ADJ. WW	ADJ. YW
80	675	Too Young

The youngest heifer in our offering with a lot of production potential and an own daughter of our foundation 'Honey Bear' – WAF Honey Bear 251. We love our 'Bear' females – they're gentle natured, moderate sized, massive, fertile and easy fleshing with great mothering ability. Her Pathfinder donor dam has earned a progeny record of BR 3@98, WR 3@103 and YR 3@102. Be sure to check out Lots 8 and 12 – impressive bulls produced by maternal sisters to Lot 78.



**PVF SURVEILLANCE 4129**  
 SIRE OF LOT 78



# Vision *Angus*



## *Thank You!*

**FOR YOUR ATTENDANCE & CONSIDERATION!**  
**YOUR SATISFACTION IS GUARANTEED!**



# Vision *Angus*

BRENT, TINA, AUSTIN & ALEX VIESELMAYER  
36996 COUNTY ROAD 53  
AMHERST, COLORADO 80721

**FIRST CLASS MAIL • DO NOT DELAY**

CHECK ONLINE FOR SALE UPDATES!

[WWW.VISIONANGUS.COM](http://WWW.VISIONANGUS.COM) | [WWW.FACEBOOK.COM/VISIONANGUS](http://WWW.FACEBOOK.COM/VISIONANGUS)

*These Lots All Sell*  
**MONDAY, MARCH 1ST**



**LOT 1**



**LOT 7**



**LOT 16**



**LOT 23**



**LOT 30**



**LOT 67**



**THE SHOWTIMES DESIGN**  
[THESHOWTIMESMAGAZINE.COM](http://THESHOWTIMESMAGAZINE.COM)