

Vision *Angus*



26th Annual Sale
MARCH 4, 2024

2:00 PM CST | NORTH PLATTE, NE | LINCOLN COUNTY FAIRGROUNDS
SELLING 55 BULLS, 16 HEIFERS & 10 BRED COWS

Create a Vision for your Cow Herd



Vision Angus

36996 County Road 53 | Amherst, CO 80721

Brent 970.520.9006

Tina 970.520.9012

Austin 970.520.9060

Email: visionangus@pctelcom.coop

Website: www.visionangus.com

Your personal invitation

FROM THE VIESELMAYER FAMILY OF VISION ANGUS

SARAH HEDRICK, AUSTIN, TINA, BRENT & ALEX VIESELMAYER

Welcome to our 26th Anniversary Sale!

Welcome to the Vision Angus Annual Bull and Female Sale! Last year we made it over the hump at the 25 year mark. Looking back, I'm not sure how we did it, but continued faith and a positive outlook help. Now it's on to the next milestone, God willing and whatever that maybe.

As we at Vision Angus look to the future, we don't have any plans on steering the ship, or our cow herd, in a different direction. We plan to continue to make better Angus cattle for ourselves and our customers. We will continue to breed for balance and predictability. Why? It's economically important to us and our customers.

One positive aspect of putting together an annual sale catalog is having a chance to review the data from our cow herd more in depth. The daughter production from a couple of bulls that had topped our past sales is impressive. Vision Overdrive 7001 daughters have a collective progeny weaning ratio of 104 and Vision Emperial 6003 daughters have a collective progeny weaning ratio of 103. We have used both of these sires with the utmost confidence and you will find

several individuals in this sale from these productive young cows. Validation of our genetic progress is in the proof of production. We have increased confidence in our cow herd every year. Therefore, we plan to use young sires from our program via artificial insemination this year and more in the future.

We encourage you to find the common threads running throughout this sale offering. They include some of the best maternal proven cows in the breed, the right EPD combinations for our production systems and environment, the prolific Evergreen cow family that is the heart of our herd, sires that balance EPD's to ensure the success of working cows and a three-dimensional phenotype.

***New this year is our offering of 10 bred cows. These are cows that will calve in April no matter their record or pedigree. Everything that is due in April sells on this sale.

We invite you to study the program at Vision Angus. Then we encourage you to give us a call or text to learn more about our program and cattle. Finally, we invite you to - **Create a Vision for your Cow Herd** on Monday, March 4th.

Sincerely,

Brent, Tina & Austin Vieselmeier
Vision Angus

This sale will be broadcast live on the internet.

DVAuction
Broadcasting Real-Time Auctions

Real time bidding & proxy bidding available.

VIDEOS OF ALL LOTS WILL BE POSTED ONLINE
REGISTER 24 HOURS PRIOR TO SALE TIME TO BID ONLINE

WWW.DVAUCTION.COM

FOR GENERAL QUESTIONS PLEASE CONTACT OUR OFFICE:

402.316.5460

SUPPORT@DVAUCTION.COM

916.803.3113

m3cattlemarketing@gmail.com



CREATE A **Vision** FOR YOUR COW HERD



Raise Quality Cattle – You can count on Vision Angus to be your seedstock supplier of choice with a ‘Quality’ cow herd based on balanced-trait selection.

Growthy, thick ended, fancy calves still command top dollar at the sale barn and on video. Your reputation is as important as how the calves look. Capture the premium available from having the right reputation, quality and information. Don't just have "Commodity Cattle". At Vision Angus, we know those calves need to have that eye appeal, growth and thickness. We offer bulls that will provide these phenotypic traits and help you "get noticed". We also know that maternal traits and cow longevity have the largest impact on your profitability. EPD's cannot measure every trait.



Develop A Herd Health Plan – You can count on Vision Angus to help you develop a plan with our access to experts and knowledge of the products.

Use your veterinarian but just don't go to the clinic the day before you work calves and get the vaccine they tell you to get. There are new vaccines available and there are systems to create immunization compliments. Review the vaccine protocols of the video and sale barn programs available to you as sellers. The most important thing is to develop a plan and take advantage of the value in your feeder calves by having them properly vaccinated. The data derived from over 25 million head of cattle sold on Superior Livestock is astounding. Calves weaned and on a vaccination program are commanding higher prices.



Provide The Right Nutrition – You can count on Vision Angus to check and balance your rations with over 30 years of ruminant nutrition training and experience

Our son Austin is now with Suther Feeds. Even if you don't feed Suther products, count on our team to help you with your nutrition questions. Take advantage of University information on nutrition and management. Subscribe to <https://beef.unl.edu/beefwatch>. Nebraska beef producers have an amazing and talented extension and research system at University of Nebraska. The science of proper nutrition can help you take advantage of the 'Quality' genetics you have selected for your herd.



Take Advantage Of Technology – You can count on Vision Angus to provide the guidance and tools to help you utilize these genomic programs.

Most of us are also farmers. We use technology in agronomy extensively – seed traits, chemistries and biologicals to name a few. We have to count on the science and the data to tell us that the technology will benefit us. We need to start utilizing the genomic science available to us in beef cattle. Quantify your herd genetically with respect to maternal, growth and carcass traits. Take advantage of the programs available through American Angus Association to make decisions when selecting replacement heifers and marketing feeder cattle. We have been genomic testing our herd since 2013 (11 years) to help us make decisions and help you select the right seedstock.



Market Your Calves With Information – You can count on Vision Angus to help you capitalize on every opportunity to market your cattle with more information with our many industry contacts.

Take advantage of the programs available such as Angus Link, Top Dollar Angus, NHTC, vaccine programs and genomic testing such as GeneMax Advantage to name a few. There are a wide variety of programs and opportunities. Many of these will help you acquire data and information on your feeders to help you improve your genetics, management and marketing.



Take Advantage Of Our Educational Opportunities – You can count on Vision Angus to bring you more information that you can use to improve the profitability of your cow herd.

Receive updates, information, and links via text from Vision Angus and join our Zoom meetings to learn about programs as well as production, management and marketing strategies that you can use to improve the profitability of your cow herd.

26TH ANNUAL SALE MONDAY, MARCH 4, 2024

2:00 PM CST | NORTH PLATTE, NE | LINCOLN COUNTY FAIRGROUNDS



Vision Angus

36996 County Road 53 | Amherst, CO 80721

Brent: 970.520.9006 | Tina: 970.520.9012 | Austin: 970.520.9060 | Email: visionangus@pctelcom.coop | Website: www.visionangus.com

Join us **12:00-2:00 PM** for Complimentary Lunch & Educational Social on Sale Day!



Sale Day Location

Lincoln County Fairgrounds | 5015 Rodeo Rd. | North Platte, NE 69101
The fairgrounds are located three miles west of Highway 30 & 83 junction in North Platte on Highway 30.

Sale Day & Cellular Phones

Lincoln County Fairgrounds.....308.532.1204
Tina.....970.520.9012
Brent.....970.520.9006
Austin.....970.520.9060

Auctioneer

Matt Lowery.....308.750.6119

Sale Day Staff

Randy Rasby, American Cattlemen.....308.539.6195
Bobby Strecker, Special Assignment540.462.7912
Jason Hansen, Livestock Digital402.649.0500
Ryan Large, Sales Representative, DVAuction308.340.9859
Will Harsh, American Angus Association740.272.1386

DVAuction

If you are unable to join us on sale day, the auction will be broadcast on DVAuction. Watch and bid online by registering at www.DVAuction.com prior to sale day to obtain buyer approval. A high speed internet connection is required for viewing and bidding. For questions regarding preregistration, bidding and/or the broadcast, please contact DVAuction at 402.316.5460 Or support@dvauction.com

Photos/Videos

All lot photos and videos were taken by Brent Vieselmeyer and edited by Kaylee Tracy, Tracy Cattle Co., Gordon, NE. View the videos at www.DVAuction.com or access the link from our website at www.visionangus.com.

Sale Ring

All lots will sell through the Sale Ring for the buyers' convenience. DVAuction will also display the individual lot video as the cattle are selling.

Bulls Are Properly Developed For Your Benefit!

Bull nutrition and development has been conducted with the assistance from the professionals at Suther Feeds, Inc. Our nutrition and herd health have been designed to ensure the longevity of the bulls. The disposition of the bulls reflects the way they have been developed.



Fertility Exam And Herd Health

Breeding soundness evaluations and heifer pelvic measurements were performed by Dr. Jeffrey Tharp, Holyoke Veterinary Service at Holyoke, CO 970-854-3800. Bulls are guaranteed breeders and sell with an individual fertility exam certificate. They have all been semen checked prior to the sale. All lots have been vaccinated for IBR, PI3, BVD, 7-way, BRSV and Haemophilus and have been poured and injected with Decctomax. All bulls have been administered Vitamin E and wart vaccine. Heifers have been vaccinated with Bovi-Shield Gold FP5 VL5. All lots tested negative for PI BVD and are AM, NH, CA, DD and M1 free by test or pedigree.

Performance, Ultrasound And Fertility Data

EPDs printed in this catalog are as of February 2, 2024. EPD adjustments based upon submission of ultrasound scans and scrotal measurements will be reflected on an updated Supplement Sheet. A Supplement Sheet will provide updated EPDs, ultrasound data, scrotal and heifer pelvic area. If you would like information prior to the sale, please give us a call or go to www.visionangus.com or www.facebook.com/visionangus or Brent Tina Vieselmeyer for updates. All lots with the HD50K logo have been parent verified and sell with genomically enhanced EPDs.

Unconditional Sight-Unseen Purchase Guarantee

Buyers unable to attend the sale may call and give their bids to Brent, Tina, Austin or any of the sale day staff. We guarantee complete honesty and integrity in how your bids will be handled. We also guarantee complete satisfaction for bulls or heifers purchased in this manner. You don't like the bull or heifer upon possession – you don't own him/her! It's That Simple!

Unconditional First Breeding Season Guarantee

Bulls are guaranteed for 90 days from the first turnout against breeding injury. Credit for the amount of purchase price minus \$1,750 will be applied toward the purchase of another bull in next year's sale if a replacement bull is not available. Buyer should notify Vision Angus as soon as possible should injury occur and prior to the injured bull being sold for salvage. We ask that all claims for credit be made known prior to September 1, 2024. This is not a mortality insurance policy nor does it cover mismanagement or neglect. Our heifers also sell with a first season breeding guarantee.

Repeat Buyer Discount

We appreciate the loyalty of our repeat buyers and offer the following discounts on your purchases: The discount increases 1% for each consecutive year of purchase with a maximum of 5% discount. 2nd Consecutive Year of Purchase: 2% Discount | 3rd Consecutive Year of Purchase: 3% Discount | 4th Consecutive Year of Purchase: 4% Discount | 5th or more Consecutive Years of Purchase: 5% Discount.

Volume Discount

Purchase 3 or more bulls and enjoy a 5% discount on purchases!

Trucking Discount

Receive \$100 off each bull taken home sale day!

Free Delivery

Free delivery on all bull purchases in Nebraska and surrounding states. Delivery to a central location will apply to all other states. We would prefer that all heifers are taken home sale day or Tuesday, March 5th.

Free Wintering & Feed

We'll winter your bull(s) free until delivered. Visit with Brent, Tina or Austin after the sale if you have special requests regarding your bull delivery.



Targeting the Brand™

The Targeting the Brand™ logo is designed to highlight registered Angus bulls and heifers with greater genetic potential to produce calves meeting the most challenging specifications of the Certified Angus Beef® brand. Bulls and heifers must meet genetic requirements of +0.65 Marbling EPD and +55 \$ Grid to qualify for use of the Targeting the Brand™ logo.

Inspection Of The Cattle

Cattle may be viewed at the ranch located 1 mile north of Amherst, CO on County Road 53 OR at the Lincoln County Fairgrounds, North Platte, NE beginning Saturday afternoon March 2nd.

Terms And Conditions & Announcements

Bulls and heifers sell under the standard terms and conditions of the American Angus Association. Announcements made sale day take precedence over printed material in this catalog.

Retained Interest

Vision Angus will retain 1/3 semen revenue sharing interest in all of the bulls in this sale. The buyer has full possession and salvage value of the bull at the end of his useful life. All announcements made from the auction block sale day take precedence over printed information in the catalog.

All EPDs Are As Of Friday, February 2, 2024

A supplement sheet with the most current EPDs and information will be available prior to sale day.



AMERICAN ANGUS ASSOCIATION SELECTION TOOLS

We're committed to "Driving the science of better breeding" by providing you with the American Angus Association selection tools but we're doing so with more reliability and predictability through genomically enhanced EPDs.

Calving Ease Direct (CED)

is expressed as a difference in percentage of unassisted births, with a higher value indicating greater calving ease in first-calf heifers. It predicts the average difference in ease with which a sire's calves will be born when he is bred to first-calf heifers.

Birth Weight EPD (BW)

expressed in pounds, is a predictor of a sire's ability to transmit birth weight to his progeny compared to that of other sires.

Weaning Weight EPD (WW)

expressed in pounds, is a predictor of a sire's ability to transmit weaning growth to his progeny compared to that of other sires. For example, you can expect progeny from a sire with a 60 WW EPD to weigh 20 lbs heavier on average at weaning than progeny from a sire with a 40 WW EPD.

Yearling Weight EPD (YW)

expressed in pounds, is a predictor of a sire's ability to transmit yearling growth to his progeny compared to that of other sires.

Scrotal Circumference EPD (SC)

expressed in centimeters, is a predictor of the difference in transmitting ability for scrotal size compared to that of other sires.

Docility (DOC)

expressed as a difference in yearling cattle temperament, with a higher value indicating more favorable docility. It predicts the average difference of progeny from a sire in comparison with another sire's calves. In herds where temperament problems are not an issue, this expected difference would not be realized.

Heifer Pregnancy (HP)

is a selection tool to increase the probability or chance of a sire's daughters becoming pregnant as first-calf heifers during a normal breeding season. A higher EPD is the more favorable direction and the EPD is reported in percentage units.

Maternal Milk EPD (Milk)

is a predictor of a sire's genetic merit for milk and mothering ability as expressed in his daughters as compared to daughters of other sires. In other words, it is that part of a calf's weaning weight attributed to milk and mothering ability.

Carcass Weight EPD (CW)

expressed in pounds, is a predictor of the difference in hot carcass weight of a sire's progeny compared to progeny of other sires.

Marbling EPD (Marb)

expressed as a fraction of the difference in USDA marbling score of a sire's progeny compared to progeny of other sires.

Ribeye Area EPD (RE)

expressed in square inches, is a predictor of the difference in ribeye area of a sire's progeny compared to progeny of other sires.

Maternal Weaned Calf Value (\$M)

an index, expressed in dollars per head, predicts profitability differences from conception to weaning with the underlying breeding objective assuming that individuals retain their own replacement females within herd and sell the rest of the cull female and all male progeny as feeder calves. The model assumes commercial producers will replace 25% of their breeding females in the first generation and 20% of their breeding females in each subsequent generation. Traits included are as follows: calving ease direct, calving ease maternal, weaning weight, milk, heifer pregnancy, docility, mature cow weight, claw set and foot angle.

Weaned Calf Value (\$W)

an index value expressed in dollars per head, is the expected average difference in future progeny performance for preweaning merit. \$W includes both revenue and cost adjustments associated with differences in birth weight, weaning direct growth, maternal milk and mature cow size.

Feedlot Value (\$F)

an index value expressed in dollars per head, is the expected average difference in future progeny performance for postweaning merit compared to progeny of other sires.

Grid Value (\$G)

an index value expressed in dollars per head, is the expected average difference in future progeny performance for carcass grid merit compared to progeny of other sires.

Beef Value (\$B)

an index value expressed in dollars per head, is the expected average difference in future progeny performance for postweaning and carcass value compared to progeny of other sires.

Combined Value (\$C)

an index, expressed in dollars per head, which includes all traits that make up both Maternal Weaned Calf Value (\$M) and Beef Value (\$B) with the objective that commercial producers will replace 20% of their breeding females per year with replacement heifers retained within their own herd. The remaining cull heifer and steer progeny are then assumed to be sent to the feedlot where the producers retain ownership of those cattle and sell them on a quality-based carcass merit grid. Expected progeny differences (EPDs) directly influencing a combined index: calving ease direct (CED) and maternal (CEM), weaning weight (WW), yearling weight (YW), maternal milk (Milk), heifer pregnancy (HP), docility (DOC), mature cow weight (MW), foot angle (Angle), claw set (Claw), dry matter intake (DMI), marbling (Marb), carcass weight (CW), ribeye area (RE) and fat thickness (Fat).



All lots with the above designation offer you
TWO IMPORTANT ADVANTAGES:

#1

They have been parent verified to ensure pedigree accuracy. You can place 100% confidence that the genetics you're purchasing are accurately represented.

#2

Genomic test results have already been factored into their individual EPDs providing you with higher accuracy EPDs that are the equivalent of that individual already having produced and recorded 8-33 calves depending on the trait measured. For commercial and seedstock producers that's valuable insight for more accurate selection, easier identification of genetic outliers and more reliability and predictability for genetic progress.

The following table provides you the progeny equivalent for some of the traits measured through genomic testing resulting in higher accuracy EPDs.

Trait	Progeny Equivalent	Trait	Progeny Equivalent
Calving Ease Direct (CED)	28	Milk	33
Birth Weight (BW)	21	Calving Ease Maternal (CEM)	18
Weaning Weight (WW)	26	Carcass Weight (CW)	9
Yearling Weight (YW)	21	Carcass Marbling (MARB)	9
Scrotal Circumference (SC)	13	Carcass Ribeye (REA)	12

ANGUS BREED AVERAGE FOR NON-PARENT BULLS:

CED	BW	WW	YW	Milk	SC	DOC	HP	CW	Marb	RE	\$M	\$W	\$F	\$G	\$B	\$C
6	1.2	63	112	27	.87	18	12.2	50	.69	.65	63	59	88	53	144	250

ANGUS BREED AVERAGE FOR NON-PARENT COWS:

CED	BW	WW	YW	Milk	SC	DOC	HP	CW	Marb	RE	\$M	\$W	\$F	\$G	\$B	\$C
6	1.3	63	111	27	.85	18	11.9	51	.73	.68	63	58	88	54	146	251

ANGUS BREED AVERAGE FOR CURRENT SIRES:

CED	BW	WW	YW	Milk	SC	DOC	HP	CW	Marb	RE	\$M	\$W	\$F	\$G	\$B	\$C
6	1.2	62	110	26	.84	18	11.7	46	.58	.59	60	59	89	48	139	240



BALANCE IS THE KEY TO SUCCESS

*M*ost of us are developing our own replacement females and selling feeder cattle after we feed them our home raised forages.

We are asking the Angus bulls we buy to "do it all". With proper genetic selection, they can do it all, from calving-ease predictability to sale day pounds to carcass merit to maternal function.

Beware of marketing schemes that want you to select bulls that are extreme in their EPD's, from a rare "limited semen" sire or have extreme phenotype. Breeding for balance and predictability is the most difficult task that seedstock breeders can achieve yet they are the most economically important to commercial cattlemen.

Keep your herd in balance with Vision Angus genetics! Tipping the scale in one direction will sacrifice traits in the other direction. Our approach to breeding cattle will always be to balance selection traits important to our customers without chasing extremes or fads. Our success and our customers' success hinges on the balance of real-world production traits.



Ellingson Deep River

DOB: 3/2/20 • TATTOO: 0262 • REG. 19853339



We selected Deep River to bring in extra skeletal size, pounds and carcass merit – and he delivered! You'll appreciate the masculinity, maturity, athleticism and muscle these Deep River sons possess while being larger outlined, good-lookin' bulls. We have continued to incorporate Koupal Advance 28 into our breeding program and when we saw the video of Deep River's dam, we knew this was a bull that fit our breeding objectives.

Ellingson Homestead 6030

Ellingson Three Rivers 8062

EA Emblynnette 6279

Koupal Advance 28 #

EA Primrose 5083

EA Primrose 3102 #

CTS Remedy 1T01 #
EA Erica 1082
Ellingson Chaps 4095 #
EA Emblynnette 2159 #

Koupal Juneau 797 #
Koupal Ebonette 734
LT Territory 5824 of EA #
EA Primrose 9155

REFERENCE SIRE

CED	BW	WW	YW	MILK	SC	DOC	HP	CW	MARB	RE	\$M	\$W	\$F	\$G	\$B	\$C
3	3.1	87	168	28	1.62	8	9.8	91	0.65	0.83	33	64	151	58	210	305

Lot 1**LOT 1 Vision Deep River 3031**

DOB: 1/17/23 • TATTOO: 3031 • REG. 20754443

Ellingson Three Rivers 8062

Ellingson Deep River

EA Primrose 5083

Basin Payweight Plus 6048

Vision Evergreen 936

Vision Evergreen 202

Ellingson Homestead 6030

EA Emblynnette 6279

Koupal Advance 28 #

EA Primrose 3102 #

Basin Payweight 1682 #

EXAR Royal Lass 2810

S A V 004 Density 4336 #

ALC Evergreen C29R #

CED	BW	WW	YW	MILK	CW	MARB	REA	\$M	\$W	\$F	\$G	\$B	\$C
4	2.1	96	163	23	86	0.47	1.09	62	80	126	51	177	292

BW	ADJ. WW	ADJ. YW
92	819	1,446



Here's the moderate birth, high performance bull we have been striving to produce! He genuinely combines phenotypic prominence, outstanding performance and maternal heritage into an elite good footed package with a great disposition. Lot 1 is also fortified with the proven predictability of our foundation cow family – The Evergreen's that have had a tremendous influence on us and our customers. His beautiful Payweight Plus dam records a WR 3@104 and YR 3@104 with a 371 day calving-interval. With the utmost faith in Lot 1's ability to positively advance our breeding goals and objectives, we have successfully collected and frozen semen for in herd use. Individual WR 118 and YR 116.



Vision Evergreen 202
Grandam of Lot 1

AT VISION ANGUS OUR COW HERD IS BRED FOR*Balance & Predictability.***WHY? IT'S ECONOMICALLY IMPORTANT TO US & OUR CUSTOMERS!****CREATE A VISION FOR YOUR COW HERD**

Lot 2

**LOT 2 Vision Deep River 3019**

DOB: 1/9/23 • TATTOO: 3019 • REG. 20754549

Ellingson Three Rivers 8062

Ellingson Deep River

EA Primrose 5083

Vision Unanimous 1418 #

Vision Primrose 665

Sandpoint Primrose 8812

Ellingson Homestead 6030

EA Emblynette 6279

Koupal Advance 28 #

EA Primrose 3102 #

Visiontopline Royal Stockman

Vision Edella 665 #

Quaker Hill Objective 3115 #

W C C Primrose 1136

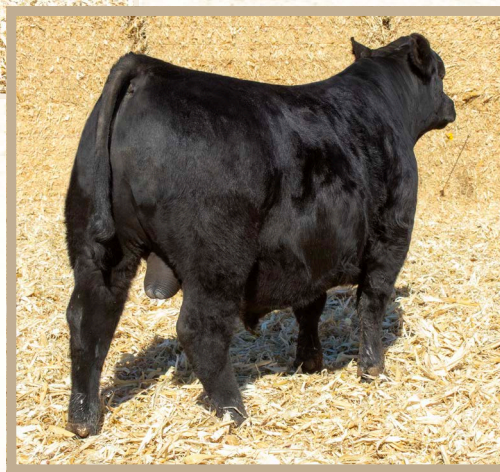
CED	BW	WW	YW	MILK	CW	MARB	REA	\$M	\$W	\$F	\$G	\$B	\$C
6	0.2	77	145	25	76	0.37	0.7	53	67	126	39	165	267

BW	ADJ. WW	ADJ. YW
84	819	1,405



Heifer Safe. Designed to be calving-ease with early rapid growth in a moderate package resulting in overwhelming three-dimensional mass! Lot 2 comes from the same Primrose cow family as N Bar Emulation EXT and his Unanimous dam simply doesn't miss earning a WR 5@107 and YR 5@108 with a 366 day calving-interval.

You can count on generations of fleshing ability, fertility and longevity with his grandam very productive until the age of 12. This cow family is growing in our herd due to their production, fertility and do-ability. Two maternal sisters sired by Vision Overdrive 7001 have collectively earned a progeny WR 103. Individual BR 97, WR 118 and YR 113.



Vision Primrose 322
Granddaughter of Lot 2's Dam

Lot 3

**LOT 3 Vision Deep River 3010**

DOB: 1/4/23 • TATTOO: 3010 • REG. 20754551

Ellingson Three Rivers 8062

Ellingson Deep River

EA Primrose 5083

Vision Unanimous 1418 #

Vision Angel 716

O H L Angel 217-2

Ellingson Homestead 6030

EA Emblynette 6279

Koupal Advance 28 #

EA Primrose 3102 #

Visiontopline Royal Stockman

Vision Edella 665 #

Plainview Lutton E102

O H L Angel 7171

CED	BW	WW	YW	MILK	CW	MARB	REA	\$M	\$W	\$F	\$G	\$B	\$C
5	2.1	79	141	27	74	0.57	0.61	55	71	118	49	168	273

BW	ADJ. WW	ADJ. YW
79	743	1,396



Genetically designed to be elite herd bull material and he exceeded our expectations! He's built to impress from head to tail from any angle with his striking design, breed character, balance, quality and structural soundness. Tremendous breeding value represented here! Lot 3 stems from a highly productive Unanimous daughter that has produced four other top-end bulls earning a progeny record of BR 5@95, WR 5@107, YR 5@109, IMF 3@108, RE 3@101 and Fat 3@126 with a 359 day calving-interval. Keep all of his daughters – you'll love them! Individual BR 91, WR 107 and YR 112.



OHL Angel 217-2
Grandam of Lot 3



Vision Unanimous 1418
Pathfinder Maternal Grandsire of Lots 2 & 3

Lot 4

**LOT 4 Vision Deep River 3008**

DOB: 1/1/23 • TATT00: 3008 • REG. 20754540

Ellingson Three Rivers 8062

Ellingson Deep River

EA Primrose 5083

Vision Imperial 6003

Vision Burgess 920

ALC Burgess R16S #

Ellingson Homestead 6030

EA Emblynette 6279

Koupal Advance 28 #

EA Primrose 3102 #

S A V Platinum 0010 #

Vision Karama 430 #

Leachman Right Time #

ALC Burgess L33K

CED	BW	WW	YW	MILK	CW	MARB	REA	\$M	\$W	\$F	\$G	\$B	\$C
5	3	68	121	25	62	0.45	0.82	52	58	105	44	150	247

BW	ADJ. WW	ADJ. YW
88	716	1,279



If you like the Deep River's but are needing more moderation in skeletal size and less mature weight then Lot 4 is your bull. He's a solid, well balanced, complete individual that you'll admire and enjoy being around due to his gentle nature and unique character. Our Burgess cow family is known for maternal function and longevity. His Pathfinder grandam earned a lifetime production record of BR 14@102, WR 14@103 and YR 11@101 with a 361 day calving-interval. Individual WR 103 and YR 103.

Lot 5

**LOT 5 Vision Deep River 3038**

DOB: 1/25/23 • TATT00: 3038 • REG. 20754546

Ellingson Three Rivers 8062

Ellingson Deep River

EA Primrose 5083

Mill Brae Comrade 6184

Mill Brae 6184 Delia 8305

Mill Brae SW Delia 6263

Ellingson Homestead 6030

EA Emblynette 6279

Koupal Advance 28 #

EA Primrose 3102 #

Connealy Comrade 1385 #

Mill Brae Obj Blackcap 9244 #

Sitz Wisdom 481T #

Mill Brae Pro Delia 1104

CED	BW	WW	YW	MILK	CW	MARB	REA	\$M	\$W	\$F	\$G	\$B	\$C
6	2.8	78	147	33	74	0.46	0.57	51	71	124	42	166	266

BW	ADJ. WW	ADJ. YW
89	680	1,237



Solid – is the best way to describe this bull, his dam, maternal brothers and heifer featured as Lots 17-19 and 56. Rock solid, consistent performance, balance and quality that will generate extra sale pounds and replacement heifer quality. You'll appreciate the heavier weights of his calves and buyers will love their look and quality.



Vision Delia 324
Lot 56 & Maternal Sister to Lot 5

Lot 6

**LOT 6 Vision Deep River 2086**

DOB: 9/18/22 • TATT00: 2086 • REG. 20739172

Ellingson Three Rivers 8062

Ellingson Deep River

EA Primrose 5083

BUBS Southern Charm AA31

Vision Lady 991

Top Line Lady 9114

Ellingson Homestead 6030

EA Emblynette 6279

Koupal Advance 28 #

EA Primrose 3102 #

Silveiras Conversion 8064

Hickory Hill Erica 009

S A V Bismarck 5682 #

OBAR Gambles Lady 1056

CED	BW	WW	YW	MILK	CW	MARB	REA	\$M	\$W	\$F	\$G	\$B	\$C
4	2.7	72	128	25	75	0.49	0.75	52	60	128	44	172	275

BW	ADJ. WW	ADJ. YW
84	662	1,291



Age Advantaged. Our favorite fall born, age-advantaged bull that was genetically designed for all the power, performance and striking phenotype he possesses. He's one that commands your attention from across the farm. You'll appreciate just how good he can get out and travel when you witness the dimension and substance he carries. Lot 6 descends from our foundation Lady – Topline Lady 9114 that recorded a WR 5@108, YR 5@106, RE 8@104 and Fat 8@101. The fall bulls have been managed independent of the yearlings and should be evaluated as such. Individual WR 105 and YR 110 among the fall bulls.

Myers Fair-N-Square M39

DOB: 1/7/19 • TATT00: M39 • REG. 19418329



We selected Fair-N-Square to provide our customers with problem-free genetics that will improve foot quality, fertility and fleshing ability. In a single generation, Fair-N-Square adds the foot quality, fertility and longevity of his proven cow family. He has exceeded our expectations and his daughters will be a cornerstone in our herd for a long time. All of our Fair-N-Square daughters settled to AI breeding in 2023 and they look fabulous as young cows. You'll appreciate these Fair-N-Square sons for their three-dimensional mass, maternal rib shape, muscle and athleticism.

Connealy Confidence Plus #
Woodhill Blueprint
Woodhill Evergreen Z291-B233
Connealy Thunder #
Myers Miss Beauty M136
Myers Miss Beauty M476 #

Connealy Confidence 0100 #
Elbanna of Conanga 1209
Tehama Sierra Cut Z118
Woodhill Evergreen U6-Z291
Baldridge Kaboom K243 KCF #
Parka of Conanga 241 #
Connealy Onward #
Myers Miss Beauty M384 #

REFERENCE SIRE



CED	BW	WW	YW	MILK	SC	DOC	HP	CW	MARB	RE	\$M	\$W	\$F	\$G	\$B	\$C
2	2.2	74	126	22	0.55	23	13.7	52	0.93	0.70	74	65	99	67	166	289

Lot 7



LOT 7 Vision Fair-N-Square 3012

DOB: 1/6/23 • TATT00: 3012 • REG. 20754532

Woodhill Blueprint
Myers Fair-N-Square M39
Myers Miss Beauty M136
Basin Payweight Plus 6048
Vision Primrose 014
Vision Primrose 571

Connealy Confidence Plus #
Woodhill Evergreen Z291-B233
Connealy Thunder #
Myers Miss Beauty M476 #
Basin Payweight 1682 #
EXAR Royal Lass 2810
Moore 902-Focus 008
Sandpoint Primrose 8812

CED	BW	WW	YW	MILK	CW	MARB	REA	\$M	\$W	\$F	\$G	\$B	\$C
7	0	80	127	33	55	0.3	0.7	84	91	88	34	122	242

BW	ADJ. WW	ADJ. YW
84	849	1,275



Heifer Safe. A maternal masterpiece that you can confidently build a herd around!

Lot 7 uniquely blends predictable calving-ease with tremendous early rapid growth in a moderate package. His progeny will weigh heavy at weaning while keeping mature cow size in balance. His dam is absolutely one of our favorite young cows – feminine, angular, moderate, big bodied and gentle with a near perfect udder. She boasts an impressive 370 day calving-interval with a BR 2@95, WR 2@111 and YR 2@101 and stems from the same Primrose cow family that produced N Bar Emulation EXT. His full sister is a favorite among our two-year-olds due to her looks, udder quality and mothering ability. Lot 7 records a BR 100 with the heaviest Adj. WW, WR 122 and YR 102.



Happy sale season! In addition to investing my future into this program I have also accepted a nutrition consultant role with Suther Feeds as of August 2023. The feed industry is not new to me, having worked in the state of Colorado for two years prior, but when this opportunity came along with Suthers I thought it was the perfect compliment to our operation and our customers. Being able to help our customers stay profitable from two sides of the industry is something I'm very excited about, offering low maintenance, high performance bulls along with a no-nonsense, efficient feeding program.

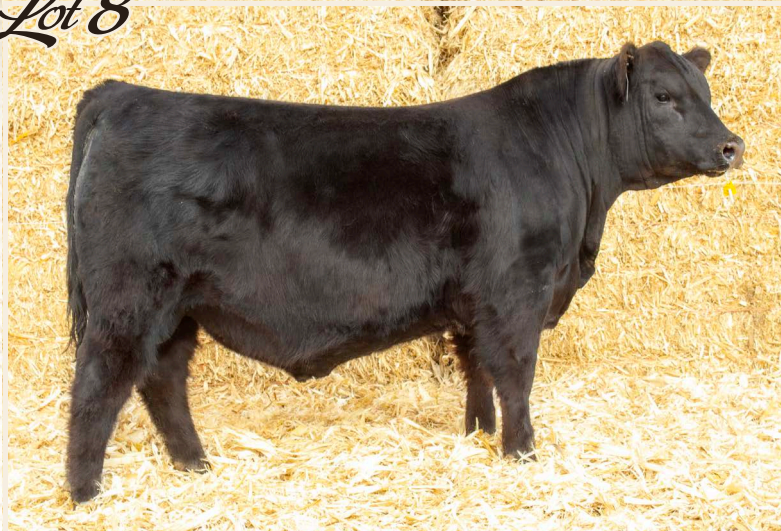
Suther Feeds doesn't rely on snake oil and one or two product lines to stay in business, they offer a tailored approach without excess to improve efficiency, maintain body condition, and ensure breedback for our customers. Suthers has stuck to one-ton customs and minimum order quantities because they value customers like you which in turn, gives me the opportunity to work with practically anybody and not just the big ranches.

We value our relationships with you and want to keep you in business so that your next generation can be successful. Please visit with me about how we can hone in your herd's nutrition program and get the most bang for your buck out of current and past bull purchases.

Suther Feeds, Inc
Opportunity • Solution • Success

Austin Vieselmeyer

Lot 8

**LOT 8 Vision Fair-N-Square 3028**

DOB: 1/14/23 • TATTOO: 3028 • REG. 20754541

Woodhill Blueprint
Myers Fair-N-Square M39
 Myers Miss Beauty M136
 LD Capitalist 316 #
Vision Proud Lassie 908
 Vision Proud Lassie 911 #

Connealy Confidence Plus #
 Woodhill Evergreen Z291-B233
 Connealy Thunder #
 Myers Miss Beauty M476 #
 Connealy Capitalist 028 #
 LD Dixie Erica 2053
 S A V Final Answer 0035 #
 Vision Proud Lassie 726

CED	BW	WW	YW	MILK	CW	MARB	REA	\$M	\$W	\$F	\$G	\$B	\$C
9	0.8	74	134	20	56	0.39	0.83	45	64	103	41	144	232

BW	ADJ. WW	ADJ. YW
80	682	1,221



Heifer Safe. You'll appreciate the base width, softness and travel ability this bull exhibits! He's thick ended, big topped with big ribeye genetics and yet youthful, smooth shouldered and backed with generations of predictable calving-ease. His dam records a BR 2@100 with a 362 day calving-interval while his Pathfinder grandam earned an impressive progeny record of BR 7@94, WR 7@102, YR 6@104, RE 6@106 and Fat 6@102. Individual BR 93.

Lot 9

**LOT 9 Vision Fair-N-Square 3043**

DOB: 2/1/23 • TATTOO: 3043 • REG. 20754533

Woodhill Blueprint
Myers Fair-N-Square M39
 Myers Miss Beauty M136
 Mill Brae Five Star 5045
Vision Silver 036
 Vision Silver 619

Connealy Confidence Plus #
 Woodhill Evergreen Z291-B233
 Connealy Thunder #
 Myers Miss Beauty M476 #
 Sitz Wisdom 481T #
 Mill Brae CC&7 Joanie 2122
 Vision Unanimous 1418 #
 Vision Silver 211

CED	BW	WW	YW	MILK	CW	MARB	REA	\$M	\$W	\$F	\$G	\$B	\$C
-2	4.6	100	183	24	90	0.78	0.86	48	71	135	63	198	305

BW	ADJ. WW	ADJ. YW
100	787	1,400



Designed to deliver more pounds and carcass merit with less mature size! Lot 9 offers an elite combination of phenotype, performance and EPDs to sire feeder calves that will top the market. You can expect his steers to have the extra grow power in the feedyard with the potential for higher premiums on a grid at harvest with high WW, YW, CW, Marb, RE, \$W, \$F, \$G, \$B and \$C EPDs. His productive Five Star dam records a 369 day calving-interval with a WR 2@105 and YR 2@106. Individual WR 113 and YR 112.

Lot 10

**LOT 10 Vision Fair-N-Square 3059**

DOB: 2/16/23 • TATTOO: 3059 • REG. 20754531

Woodhill Blueprint
Myers Fair-N-Square M39
 Myers Miss Beauty M136
 Conley Express 7211
Vision Angel 159
 O H L Angel 217-2

Connealy Confidence Plus #
 Woodhill Evergreen Z291-B233
 Connealy Thunder #
 Myers Miss Beauty M476 #
 Sma Watchout 482
 DPL Sandy 3040
 Plainview Lutton E102
 O H L Angel 7171

CED	BW	WW	YW	MILK	CW	MARB	REA	\$M	\$W	\$F	\$G	\$B	\$C
-3	4	76	128	25	58	0.6	0.62	43	63	108	50	159	249

BW	ADJ. WW	ADJ. YW
88	663	1,146



The youngest and most attractive Fair-N-Square son with style and good looks to burn! We expected nothing less, knowing that our Lady cow family consistently stamps their progeny with impeccable design and style. You can be confident that his steers and heifers will generate a lot of attention sale day. Our Fair-N-Square females are an exciting set of young females with superb udder quality, shape and teat size.

REFERENCE SIRE

Coleman Glacier 041

DOB: 1/11/20 • TATTOO: 041 • REG. 19866409

Combining some of the best maternal, time-tested and most proven Angus genetics with his impressive herd bull look, Coleman Glacier 041 is exactly what we were looking for to develop a group of bulls and females with added performance and maternal function. Glacier progeny have the balance, design and body shape we want and need in Angus cattle. An investment in these Glacier sons is a sound investment that will improve your genetics and bottom-line for years to come. Glacier was the record selling individual of the 2022 Coleman Angus Sale.



CED	BW	WW	YW	MILK	SC	DOC	HP	CW	MARB	RE	\$M	\$W	\$F	\$G	\$B	\$C
9	0.4	74	129	29	0.60	34	18.4	44	-0.31	0.73	98	74	78	7	85	208

Rito 707 of Ideal 3407 7075

SAV Renown 3439 #

SAV Blackcap May 4136

GDAR Game Day 449 #

Coleman Donna 439 #

Coleman Donna 714

R R Rito 707 #

Ideal 3407 of 1418 076

SAV 8180 Traveler 004 #

SAV May 2397 #

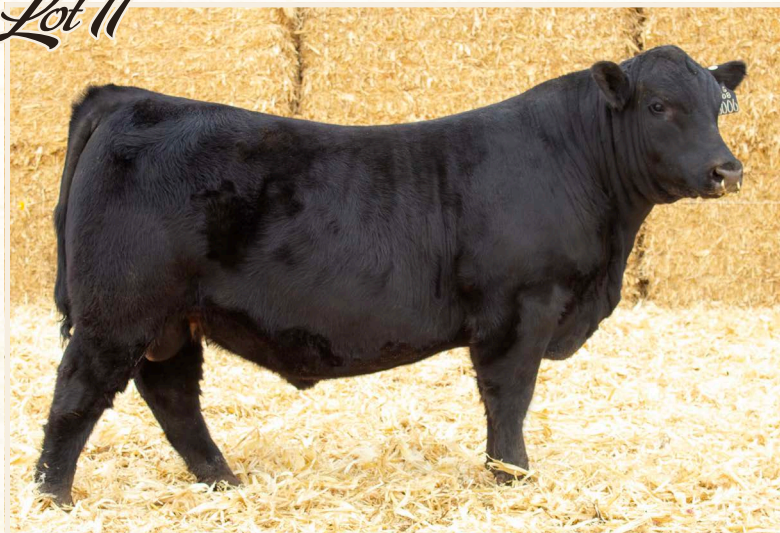
Boyd New Day 8005 #

G D A R Miss Wix 474 #

Connealy Onward #

Coleman Donna 386

Lot 11

**LOT 11 Vision Glacier 3006**

DOB: 1/1/23 • TATTOO: 3006 • REG. 20766650

SAV Renown 3439 #

Coleman Glacier 041

Coleman Donna 439 #

Vision Unanimous 1418 #

Vision Honey Bear 608

WAF Honey Bear 251 #

Rito 707 of Ideal 3407 7075

SAV Blackcap May 4136

GDAR Game Day 449 #

Coleman Donna 714

Visiontopline Royal Stockman

Vision Edella 665 #

WAF Grid Topper 7110

Waf Lass 042

CED	BW	WW	YW	MILK	SC	DOC	HP	CW	MARB	REA	\$M	\$W	\$F	\$G	\$B	\$C
6	1.9	70	120	29	44	-0.19	0.87	63	68	78	15	93	184			

BW	ADJ. WW	ADJ. YW
92	788	1,359



An athletic, captivating, powerfully built individual that's impressive from any angle! Larger outlined, stout and massive = More Pounds! You will love his performance, shape and look and can expect excellent udder quality, fertility and mothering ability in his daughters. His Unanimous dam is a tremendous producer earning a WR 6@104, YR 6@103, RE 2@102 and Fat 2@113 with a 365 day calving-interval. His Pathfinder grandam recorded a BR 4@99, WR 4@110, YR 3@107 and IMF 4@107. Buy with the utmost confidence here – We're proud to offer him up for your appraisal and selection. Individual WR 114 and YR 109.



WAF Honey Bear 251
Pathfinder Grandam of Lot 11

Lot 12

**LOT 12 Vision Glacier 3024**

DOB: 1/11/23 • TATTOO: 3024 • REG. 20766642

SAV Renown 3439 #

Coleman Glacier 041

Coleman Donna 439 #

Vision Overdrive 7001

Vision Jessica 056

Flag Jessica 90812

Rito 707 of Ideal 3407 7075

SAV Blackcap May 4136

GDAR Game Day 449 #

Coleman Donna 714

SAV Ten Speed 3022 #

Vision Proud Lassie 531 #

Vision Grid Maker 5014

SCR Jessica 50729

CED	BW	WW	YW	MILK	CW	MARB	REA	\$M	\$W	\$F	\$G	\$B	\$C
1	3	80	154	39	73	-0.11	0.87	59	72	108	20	128	225

BW	ADJ. WW	ADJ. YW
93	812	1,554



Seeing Is Believing with Lot 12 – our heaviest Adj. YW bull at 1,554 lbs. Gentle, Pounds & Maternal Function! The greatest contributor to pounds is length of body and he's got all of that and then some. This bull and cow family behind him have the added length of body that will provide more pounds and profitability from his feeder calves. The added bonus is that the Jessica cow family has the range beef cow traits needed for a profitable and sustainable cow herd. Lot 12's impressive Overdrive dam boasts a BR 2@102, WR 2@115, YR 2@116 with a 358 day calving-interval while his donor grandam has earned WR 9@106, YR 8@104, IMF 7@111 and RE 7@100. Incredible individual stats of WR 117 and YR 125.



Flag Jessica 90812
Grandam of Lot 12

Lot 13



The Maternal Duo!

LOTS 13 & 14 ET FULL BROTHERS

S A V Renown 3439 #
Coleman Glacier 041
 Coleman Donna 439 #
 SITZ Logic Y46 #
Vision Proud Lassie 531 #
 Vision Proud Lassie 911 #

Rito 707 of Ideal 3407 7075
 S A V Blackcap May 4136
 GDAR Game Day 449 #
 Coleman Donna 714
 Sitz Dimension 8607 #
 Sitz Forever Lady 6121 #
 S A V Final Answer 0035 #
 Vision Proud Lassie 726

LOT 13 Vision Glacier 3007

DOB: 1/1/23 • TATTOO: 3007 • REG. 20766654

CED	BW	WW	YW	MILK	CW	MARB	REA	\$M	\$W	\$F	\$G	\$B	\$C
12	-1.4	55	109	33	24	0	0.34	78	64	60	13	74	174
BW	ADJ. WW	ADJ. YW											
83	673	1,183											



Heifer Safe. This Maternal Duo is destined for maternal excellence with the genetic strength to take any herd to the next level! Everything we love about Anges are in these two full brothers – calving-ease, a soft maternal rib-shape, breed character, fleshing ability, sound structure and three-dimensional mass. Their 2nd generation Pathfinder donor dam brings prolific predictability recording an impressive BR 7@93, WR 7@106, YR 7@102, RE 3@105 and Fat 3@125 with a 375 day calving-interval while being flushed conventionally. Their Pathfinder grandam earned a BR 7@94, WR 7@102, YR 6@104, RE 6@106 and Fat 6@102. It doesn't get more maternal and Angus than these two Glacier sons. Put them to work and they'll take care of the rest!

LOT 14 Vision Glacier 3025

DOB: 1/11/23 • TATTOO: 3025 • REG. 20766655

CED	BW	WW	YW	MILK	CW	MARB	REA	\$M	\$W	\$F	\$G	\$B	\$C
9	-1.7	51	101	27	28	0.45	0.57	71	59	66	42	107	210
BW	ADJ. WW	ADJ. YW											
70	679	1,186											



Lot 14



Vision Proud Lassie 531
 Pathfinder Donor Dam of Lots 13 & 14



Vision Proud Lassie 331
 Full Sister to Lots 13 & 14



Vision Overdrive 7001

A Maternal Brother to Lots 13 & 14

Overdrive sons have been a favorite of our bull buyers for a number of years. His daughters have been the kind of females to rebuild your herd around which is a true testament to the maternal strength, function and performance of this Proud Lassie cow family! Overdrive progeny have collectively earned him BR 127@97, WR 122@99, YR 62@102 and 23 daughters with a 104 WR.

LOT 15 Vision Glacier 3068

DOB: 3/5/23 • TATT00: 3068 • REG. 20766376

S A V Renown 3439 #
Coleman Glacier 041
 Coleman Donna 439 #
 Kramers Enforce 5006
HCC Lady 815
 HCC Lady 504

Rito 707 of Ideal 34077075
 S A V Blackcap May 4136
 GDAR Game Day 449 #
 Coleman Donna 714
 PVF Insight 0129 #
 Kramers Evergreen Erica 1558
 Dameron First Class
 Carter's Lady X128

CED	BW	WW	YW	MILK	CW	MARB	REA	\$M	\$W	\$F	\$G	\$B	\$C
3	2.3	52	94	30	26	-0.11	0.53	74	53	61	12	74	170

BW	ADJ. WW	ADJ. YW
91	651	1,155



One of the youngest bulls in our offering with impressive phenotype and maternal value! He brings a combination of EPDs that can improve heifer pregnancy, milk, foot quality and \$M. His dam is an attractive, moderate, big bodied, easy keeping cow with a 365 day calving-interval. These genetics will provide good lookin' cattle that can forage and earn their keep. Buy with confidence – as an aged bull you'll love him!

Lot 16

**LOT 16 Vision Cadillac Ranch 3005**

DOB: 1/1/23 • TATT00: 3005 • REG. 20756686

KR Cadillac Jack
KR Cadillac Ranch
 KR Pride 4031

Square B Atlantis 8060
Vision Lady 154
 Vision Lady 649

CFCC Black Jack 001
 WK Blackbird 5066
 Barstow Cash #
 Summitcrest Pride 07X3
 S A V Rainfall 6846
 Elbanna of Conanga 1209
 PVF Insight 0129 #
 Vision Lady 432

CED	BW	WW	YW	MILK	CW	MARB	REA	\$M	\$W	\$F	\$G	\$B	\$C
0	1.1	68	118	16	42	0.58	0.7	20	54	83	47	130	189

BW	ADJ. WW	ADJ. YW
80	744	1,320



Worlds of class, style and performance – just like a Cadillac! He's a powerfully built individual that offers the distinct advantage in sheer body dimension and depth, eye-appeal, balance and quality. Something we can all appreciate in our cattle! He's backed by generations of our Lady cow family known for producing three-dimensional, good lookin' and gentle-natured cattle. Not recommended for heifers and would be better suited for your three-year olds or cows.

MAKE YOUR CATTLE STAND OUT

You've made a significant investment in your genetics, but does the market recognize that? Stand out by differentiating your cattle with AngusLinkSM programs: AngusVerifiedSM and the Genetic Merit ScorecardSM. AngusVerified validates your calves are sired by registered Angus bulls and make your cattle stand apart from other black hides on sale day. The Genetic Merit Scorecard gives buyers the confidence they need to pay more for your quality calves.

Users of the AngusLink programs earn **\$13-15/CWT PREMIUMS** on average. Give us a call, and learn how to claim your competitive edge with AngusLink value-added programs.



AngusVerified and the Genetic Merit Scorecard are administered by IMI Global.

ANGUSLINKSM
 VALUE ADDED PROGRAMS

ANGUSLINK.COM | 816-383-5100

LAR Man In Black

DOB: 1/27/20 • TATT00: 075 • REG. 19955191



Connealy Black Granite #

Bar R Jet Black 5063

Bar R Iris Anita 0113

Sitz Top Game 561X #

JMB Maxine TG 2131 #

JMB Maxine Deluxe 9034 #

Connealy Consensus 7229 #

Eura Elga of Conanga 9109 #

Sitz Upward 307R #

GDAR Game Day 449 #

Sitz Pride 88T #

Stevenson CE Deluxe 1914 #

JMB Maxine 720

CED	BW	WW	YW	MILK	SC	DOC	HP	CW	MARB	RE
9	2.5	92	164	20	1.54	16	11.2	87	1.12	0.82

\$M	\$W	\$F	\$G	\$B	\$C
55	69	134	74	209	326

LAR Man In Black was described as a man amongst boys from a young age, combining tremendous base width and muscle with exceptional substance, rib shape and length of body. Man In Black has been a popular sire nationwide for delivering massive, big bodied, pounds heavy offspring. His EPD profile includes moderate birth, exceptional weaning and yearling growth balanced with high marbling. Man In Black's dam is a 10 plus year old Pathfinder with a great udder and progeny weaning ratio of 112.

REFERENCE SIRE*Lot 17**Lot 18**Lot 19**A Carcass Value Trio!***LOTS 17, 18 & 19 ET FULL BROTHERS****LOT 17 Vision Man In Black 3026**

DOB: 1/12/23 • TATT00: 3026 • REG. 20755424

CED	BW	WW	YW	MILK	CW	MARB	REA	\$M	\$W	\$F	\$G	\$B	\$C
3	4.5	93	161	31	77	0.83	0.88	63	77	109	64	172	286

BW	ADJ. WW	ADJ. YW
93	794	1,423



Our favorite bull in this powerful set of flush brothers. He's big, stout, bold-centered and correct. You'll admire his masculinity and massive body shape coupled with a powerful top and rear quarter. On the move, he's fluid and correct setting down on a big, correct foot. You'll appreciate his elite EPD profile that excels for growth, maternal and carcass-improving traits! The maternal brother by Deep River sells as Lot 5. Individual WR 106 and YR 114.

LOT 18 Vision Man In Black 3020

DOB: 1/9/23 • TATT00: 3020 • REG. 20755423

CED	BW	WW	YW	MILK	CW	MARB	REA	\$M	\$W	\$F	\$G	\$B	\$C
7	3.2	87	154	20	74	1.11	0.87	60	68	116	77	102	210

BW	ADJ. WW	ADJ. YW
94	705	1,287



Another massive and impressive individual from the Man In Black x Delia flush! His abundance of volume and maternal rib shape should lend kindly to siring range, forage-oriented females and steers that have an appetite for gain in the feedlot. Of the three flush brothers, Lot 18 has the advantage of end-product merit if that's your focus and end-point. Individual YR 103.



Vision Delia 324
Lot 56 & Full Sister to Lots 17-19

LOT 19 Vision Man In Black 3015

DOB: 1/6/23 • TATT00: 3015 • REG. 20755422

Bar R Jet Black 5063

LAR Man In Black

JMB Maxine TG 2131 #

Mill Brae Comrade 6184

Mill Brae 6184 Delia 8305

Mill Brae SW Delia 6263

Connealy Black Granite #

Bar R Iris Anita 0113

Sitz Top Game 561X #

JMB Maxine Deluxe 9034 #

Connealy Comrade 1385 #

Mill Brae Obj Blackcap 9244 #

Sitz Wisdom 481T #

Mill Brae Pro Delia 1104

CED	BW	WW	YW	MILK	CW	MARB	REA	\$M	\$W	\$F	\$G	\$B	\$C
3	4.2	96	162	29	84	1.08	0.57	83	85	121	69	190	329

BW	ADJ. WW	ADJ. YW
95	808	1,053



Here's the flush brother that genomically tested with more performance and maternal value generating an intriguing EPD profile. You can count on this mating to deliver the pounds, gain-ability, carcass quality and maternal function.

Create a Vision for your Cow Herd

Lot 20

Vision
Angus

BULLS

LOT 20 Vision Man In Black 3009

DOB: 1/1/23 • TATT00: 3009 • REG. 20755421

Bar R Jet Black 5063
LAR Man In Black
JMB Maxine TG 2131 #
Vision Imperial 6003
Vision Evergreen 925 #
Vision Evergreen 308

Connealy Black Granite #
Bar R Iris Anita 0113
Sitz Top Game 561X #
JMB Maxine Deluxe 9034 #
S A V Platinum 0010 #
Vision Karima 430 #
S A V 004 Density 4336 #
ALC Evergreen C29R #

CED	BW	WW	YW	MILK	CW	MARB	REA	\$M	\$W	\$F	\$G	\$B	\$C
9	0.5	65	115	30	58	0.62	0.42	81	69	97	44	142	265

BW	ADJ. WW	ADJ. YW
79	684	1,222



Heifer Safe. Balanced by design in a reliable calving-ease, maternally-oriented package that you've come to expect from Vision Angus. His Imperial dam just earned Pathfinder status with a 358 day calving-interval, BR 3@100, WR 3@105 and YR 3@102. His Density grandam was a solid female with two daughters retained in the herd and both are now Pathfinders – another testament to the productivity of our Evergreens. Individual BR 92.

Lot 21

LOT 21 Vision Man In Black 3035

DOB: 1/24/23 • TATT00: 3035 • REG. 20755419

Bar R Jet Black 5063
LAR Man In Black
JMB Maxine TG 2131 #
Ellingson Chaps 4095 #
Vision Pride 922 #
Vision Pride 572

Connealy Black Granite #
Bar R Iris Anita 0113
Sitz Top Game 561X #
JMB Maxine Deluxe 9034 #
S A V Resource 1441 #
E A Blackcap 0360 #
Moore 902-Focus 008
SandPoint Pride 1359

CED	BW	WW	YW	MILK	CW	MARB	REA	\$M	\$W	\$F	\$G	\$B	\$C
9	0.9	65	117	29	41	0.75	0.34	79	66	73	52	125	241

BW	ADJ. WW	ADJ. YW
86	680	1,267



Heifer Safe. Another Man In Black son backed by a rugged, capacious Pathfinder dam that consistently gets the job done! Lot 21's dam has earned a BR 3@98, WR 3@105 and YR 3@106 with a 373 day calving-interval. His grandam is featured as Lot 79 and records a BR 5@99, WR 5@101, YR 5@102, IMF 1@161 and Fat 1@121. Individual stats BR 100, WR 98 and YR 102.

Lot 22

LOT 22 Vision Man In Black 3050

DOB: 2/6/23 • TATT00: 3050 • REG. 20755325

Bar R Jet Black 5063
LAR Man In Black
JMB Maxine TG 2131 #
Mill Brae Five Star 5045
Vision Jessica 051
Vision Jessica 607

Connealy Black Granite #
Bar R Iris Anita 0113
Sitz Top Game 561X #
JMB Maxine Deluxe 9034 #
Sitz Wisdom 481T #
Mill Brae CC&7 Joanie 2122
S A V Resource 1441 #
Flag Jessica 90812

CED	BW	WW	YW	MILK	CW	MARB	REA	\$M	\$W	\$F	\$G	\$B	\$C
7	2.4	89	161	26	76	0.86	0.92	54	74	111	66	177	284

BW	ADJ. WW	ADJ. YW
86	750	1,390



Powerfully and correctly designed individual with great breed character, performance and carcass-improving genetics! You just add your calf care and reputation to his quality genetics on sale day to capture those extra premiums. His dam is a powerfully impressive Five Star daughter that always gets noticed by ranch visitors. She's boasting a WR 2@112 and YR 1@112 with her first calf selling for \$14,500 to Lindskov LT Ranch, Isabel, SD. Individual WR 108 and YR 112.



Vision Jessica 051
Dam of Lot 22

LOT 23 Vision Man In Black 3027

DOB: 1/13/23 • TATT00: 3027 • REG. 20755427

Bar R Jet Black 5063
LAR Man In Black
JMB Maxine TG 2131 #
Ellingson Top Shelf 5050
Vision Jessica 801
Vision Jessica 607

Connealy Black Granite #
Bar R Iris Anita 0113
Sitz Top Game 561X #
JMB Maxine Deluxe 9034 #
Ellingson Plateau 1155
EA Emblynette 9203 #
S A V Resource 1441 #
Flag Jessica 90812

CED	BW	WW	YW	MILK	CW	MARB	REA	\$M	\$W	\$F	\$G	\$B	\$C
5	3.9	78	140	26	70	0.49	0.98	49	62	112	52	163	260

BW	ADJ. WW	ADJ. YW
88	621	1,210



An athletic, long-spined, strong-topped bull with the extra length and design to add value to a set of feeder calves. His dam earned an impressive 350 day calving-interval on 4 calves.

Lot 24

**LOT 24 Vision Patriarch 3004**

DOB: 1/1/23 • TATT00: 3004 • REG. 20755355

SS Niagara Z29 #
Tehama Patriarch F028
 Tehama Elite Blackbird D826
 Woodhill Blueprint
Vision Lady 131
 Vision Lady 947

Hoover Dam #
 Jet S X144
 Connealy Thunder #
 Tehama Elite Blackbird Z630
 Connealy Confidence Plus #
 Woodhill Evergreen Z291-B233
 Mill Brae Five Star 5045
 Vision Lady 432

CED	BW	WW	YW	MILK	CW	MARB	REA	\$M	\$W	\$F	\$G	\$B	\$C
11	-0.5	71	132	22	52	0.96	0.78	48	62	93	68	161	257

BW	ADJ. WW	ADJ. YW
74	743	1,346



Heifer Safe. Here's a predictable calving-ease, heifer bull that doesn't sacrifice growth or carcass traits. Use Lot 24 to compliment your best, newer genetics in your heifers. He will contribute to the betterment of your cow herd and your genetic progress will be exponential. His two-year-old dam did an impressive job weaning 65% of her body weight. Individual BR 94, WR 103 and YR 104.

TEST YOUR HUNCH*Which heifers would you keep?***How do you decide which heifers to select or sell?***Visual inspection alone leaves a lot to chance.*

Pair visual and/or phenotypic data with genetic testing to make more informed decisions to help accelerate progress in your herd. Zoetis delivers comprehensive, accurate genetic predictions to aid in selection, breeding and marketing decisions.



SCAN HERE
 or visit SelectWithGenetics.com
 to put your heifer selection skills to the test.



All trademarks are the property of Zoetis Services LLC or a related company or a licensor unless otherwise noted. GeneMax is a registered trademark of Angus Genetics, Inc. American Angus Association is a registered trademark of American Angus, Non-Profit Association Illinois. Angus Genetics, Inc. is a registered trademark of Angus Genetics, Inc. © 2022 Zoetis Services LLC. All rights reserved. GMS-0002

Sitz Accomplishment 720F

DOB: 1/24/18 • TATT00: 720F • REG. 19078208

We have had three calf crops from Sitz Accomplishment so we know what to expect and what he will deliver – calving-ease, fast calf growth, moderate mature size, perfect shaped udders and good mothers. These Accomplishment sons are wide based, stout, rugged and masculine. His EPDs are high accuracy and tell his story of delivering economically relevant, balanced traits.

Poss Lasting Impact 3118
Poss Achievement
 Poss Erica 327
 S A V Resource 1441 #
Sitz Barbaramere Nell 166D
 Sitz Barbaramere Nell 14Y

Poss Easy Impact 0119
 Poss Blackbird 005
 KM Broken Bow 002 #
 Poss Erica 1203
 Rito 707 of Ideal 3407 7075
 S A V Blackcap May 4136
 Connealy Right Answer 746 #
 Sitz Barbaramere Nell 143W

REFERENCE SIRE

CED	BW	WW	YW	MILK	SC	DOC	HP	CW	MARB	RE	\$M	\$W	\$F	\$G	\$B	\$C
9	0.9	75	138	19	1.08	15	16.1	49	0.57	0.57	66	60	86	44	129	233

Lot 25

**LOT 25 Vision Accomplishment 3034**

DOB: 1/24/23 • TATT00: 3034 • REG. 20755407

Poss Achievement
Sitz Accomplishment 720F
Sitz Barbaramere Nell 166D
Vision Overdrive 7001
Vision Glenda 019
Mill Brae Rem Glenda 8256

Poss Lasting Impact 3118
Poss Erica 327
S A V Resource 1441 #
Sitz Barbaramere Nell 14Y
S A V Ten Speed 3022 #
Vision Proud Lassie 531 #
CTS Remedy 1T01 #
Mill Brae 338 RT Glenda 0231 #

CED	BW	WW	YW	MILK	CW	MARB	REA	\$M	\$W	\$F	\$G	\$B	\$C
11	0	68	130	23	42	0.77	0.72	62	62	80	57	137	240

BW	ADJ. WW	ADJ. YW
86	780	1,334



Heifer Safe. One of the more impressive bulls you'll see this bull sale season. Lot 25 is flat out stout, three-dimensional, impressive on the move and he's recommended safe for heifers! The part that we cannot stress enough is how incredibly good his dam and grandam are! His Overdrive dam is one of our best young females recording BR 2@97, WR 2@108, YR 1@101 while his grandam records BR 3@97, WR 3@102, YR 2@104 and IMF 1@125. Predictable calving-ease, exceptional performance and design backed by generations of productive cows! He completes the balance of traits we're committed to delivering to Vision Angus customers. Individual WR 112 and YR 107.

Lot 26

**LOT 26 Vision Accomplishment 3022**

DOB: 1/10/23 • TATT00: 3022 • REG. 20755414

Poss Achievement
Sitz Accomplishment 720F
Sitz Barbaramere Nell 166D
CTS Remedy 1T01 #
Mill Brae Rem Glenda 8256
Mill Brae 338 RT Glenda 0231 #

Poss Lasting Impact 3118
Poss Erica 327
S A V Resource 1441 #
Sitz Barbaramere Nell 14Y
Connealy Thunder #
CTS 7V03 Belleme Maid 9T02
Hyline Right Time 338 #
Mill Brae 1F Glenda 7109

CED	BW	WW	YW	MILK	CW	MARB	REA	\$M	\$W	\$F	\$G	\$B	\$C
10	0.1	67	123	25	47	0.53	0.49	63	63	85	43	128	229

BW	ADJ. WW	ADJ. YW
80	663	1,130



Heifer Safe. A calving-ease bull that balances looks and stoutness in the pen with breed leading EPDs in BW, SC, HP, CEM & PAP. We all know that the validation of our genetic progress comes in proof of production. And in this case a maternal sister to Lot 26 produced Lot 25 – there's the validation. Dam records a solid BR 3@97, WR 3@102, YR 3@100, IMF 1@125 and Fat 1@155. Individual BR 92.

Lot 27

**LOT 27 Vision Accomplishment 3002**

DOB: 1/1/23 • TATT00: 3002 • REG. 20755405

Poss Achievement
Sitz Accomplishment 720F
Sitz Barbaramere Nell 166D
Woodhill Blueprint
Vision Black Oak 104
Vision Black Oak 871

Poss Lasting Impact 3118
Poss Erica 327
S A V Resource 1441 #
Sitz Barbaramere Nell 14Y
Connealy Confidence Plus #
Woodhill Evergreen Z291-B233
Moore 902-Focus 008
Vision Black Oak 512

CED	BW	WW	YW	MILK	CW	MARB	REA	\$M	\$W	\$F	\$G	\$B	\$C
15	-1.9	73	129	22	37	0.51	0.62	50	67	69	40	109	191

BW	ADJ. WW	ADJ. YW
67	735	1,309



Heifer Safe. We've liked him since birth and he's been a favorite of ranch visitors since early summer. He'll be one of the most impressive, predictable calving-ease bulls to sell this sale season. He uniquely blends three generations of calving-ease with the extra dimension, muscle and stoutness in a smooth made, moderate package! His two-year-old Blueprint dam is moderate, massive, feminine and easy-keeping with a beautiful udder. It's all by design! Individual stats BR 85, WR 102 and YR 101. Ranks in the Top 3% CED, 4% BW, 25% WW, 25% YW, 15% SC, 10% CEM, 15% MW but 50% MH, 15% PAP and 30% \$W.

Lot 28

**LOT 28 Vision Accomplishment 2081**

DOB: 9/11/22 • TATT00: 2081 • REG. 20755406

Poss Achievement
Sitz Accomplishment 720F
 Sitz Barbaramere Nell 166D
 ST Power Chip 4790
Vision Sandy 096
 Vision Sandy 785

Poss Lasting Impact 3118
 Poss Erica 327
 S A V Resource 1441 #
 Sitz Barbaramere Nell 14Y
 EXAR Blue Chip 1877B
 ST Miss Wix 8002
 Sitz Investment 660Z #
 Seldom Rest Sandy 5089

CED	BW	WW	YW	MILK	CW	MARB	REA	\$M	\$W	\$F	\$G	\$B	\$C
9	2.1	69	125	24	47	0.58	0.57	45	59	83	43	127	210

BW	ADJ. WW	ADJ. YW
72	729	1,233



Heifer Safe and Age Advantaged. Accomplishments have been consistent for wide-bodied, easy-keeping bulls and moderate, good-doing females! Lot 28 is no exception. You'll appreciate his tremendous length, robust rib shape, fleshing-ability and three-dimensional mass in a smooth, calving-ease design. Take advantage of the additional age and athletic mobility of Lot 28 during breeding and increase your number of females exposed. Individual stats 72 lb BW and 100 BR.

Lot 29

**LOT 29 Vision Accomplishment 2088**

DOB: 10/3/22 • TATT00: 2088 • REG. 20755408

Poss Achievement
Sitz Accomplishment 720F
 Sitz Barbaramere Nell 166D
 Musgrave 316 Stunner
Vision Sandy 992
 Vision Sandy 785

Poss Lasting Impact 3118
 Poss Erica 327
 S A V Resource 1441 #
 Sitz Barbaramere Nell 14Y
 LD Capitalist 316 #
 MCATL Blackbird 831-1378 #
 Sitz Investment 660Z #
 Seldom Rest Sandy 5089

CED	BW	WW	YW	MILK	CW	MARB	REA	\$M	\$W	\$F	\$G	\$B	\$C
9	0.1	70	119	17	42	0.73	0.25	44	61	78	45	124	205

BW	ADJ. WW	ADJ. YW
80	609	1,124



Heifer Safe and Age Advantaged. Lot 29's genomic predictions and build have aligned to offer you more peace of mind at calving. He's a later maturing individual that will continue to develop into a front pasture kind of herd bull. These age advantaged Accomplishment sons are sure to have many friends sale day!

Lot 30

**LOT 30 Vision Accomplishment 3021**

DOB: 1/10/23 • TATT00: 3021 • REG. 20755412

Poss Achievement
Sitz Accomplishment 720F
 Sitz Barbaramere Nell 166D
 K C F Bennett Fortress #
Vision Karama 930
 Vision Karama 860

Poss Lasting Impact 3118
 Poss Erica 327
 S A V Resource 1441 #
 Sitz Barbaramere Nell 14Y
 Connealy Consensus #
 Thomas Patricia 9705
 SydGen On The Mark
 Vision Karama 534

CED	BW	WW	YW	MILK	CW	MARB	REA	\$M	\$W	\$F	\$G	\$B	\$C
3	1.2	69	126	28	39	1.04	0.41	58	67	70	66	136	234

BW	ADJ. WW	ADJ. YW
84	715	1,206



A high-marbling Accomplishment son with more length, extension and grow power. You'll like his phenotype and balance which should deliver a more attractive calf crop with more marbling potential. The extra style, length and stretch comes from his Fortress dam that is still big bodied, angular and attractive for her size. Individual stats BR 98 and WR 103.

Lot 31

**LOT 31 Vision Accomplishment 3046**

DOB: 2/1/23 • TATT00: 3046 • REG. 20755279

Poss Achievement
Sitz Accomplishment 720F
Sitz Barbaramere Nell 166D
Vision Overdrive 7001
Frank Erica 1166
Vision Erica 770

Poss Lasting Impact 3118
Poss Erica 327
S A V Resource 1441 #
Sitz Barbaramere Nell 14Y
S A V Ten Speed 3022 #
Vision Proud Lassie 531 #
Vision Unanimous 5030
AVF Erica 8360

CED	BW	WW	YW	MILK	CW	MARB	REA	\$M	\$W	\$F	\$G	\$B	\$C
9	0.9	72	130	23	49	0.41	0.22	58	65	81	30	111	202

BW	ADJ. WW	ADJ. YW
84	725	1,370



Heifer Safe. A reliable calving-ease bull that's smooth in his build and design with added length and grow power! He's sure to produce an attractive set of feeders with more saleable weight and replacements with the problem-free, maternal function you demand. His two-year-old Overdrive dam is a fancy, young cow with a promising future. Individual stats WR 100 and YR 105.

Lot 32

**LOT 32 Vision Accomplishment 3054**

DOB: 2/8/23 • TATT00: 3054 • REG. 20755373

Poss Achievement
Sitz Accomplishment 720F
Sitz Barbaramere Nell 166D
Mill Brae A Plus 9008
Vision Blackcap 139
Vision Blackcap 924

Poss Lasting Impact 3118
Poss Erica 327
S A V Resource 1441 #
Sitz Barbaramere Nell 14Y
Connealy Confidence Plus #
Mill Brae RA Juanada 2024 #
LD Capitalist 316 #
Vision Blackcap 604

CED	BW	WW	YW	MILK	CW	MARB	REA	\$M	\$W	\$F	\$G	\$B	\$C
7	1.4	74	129	25	48	0.76	0.61	60	68	85	56	142	244

BW	ADJ. WW	ADJ. YW
80	628	1,178



Heifer Safe. A soft-middled, balanced-trait bull that will provide the predictable calving-ease and then the maternal do ability we all want in our cow herds. The bonus is that he has higher marbling genetics. At Vision Angus our cow herd is bred for balance and predictability. Why? Its economically important to us and our customers.

Create a Vision for your Cow Herd



REFERENCE SIRE

Ellingson Rangeland

DOB: 2/24/19 • TATT00: 9144 • REG. 19590500

Appropriately named, Ellingson Rangeland is about as useful and relevant for the commercial cattlemen as you can make a proven, Angus sire today. He is a unique outcross to many pedigrees that delivers moderate birth with extra pounds while improving feet, fertility, milk, and dollar values! All of the sires in his pedigree are known for producing excellent, functional females. The Rangeland daughters we calved this year are exceeding our expectations with correct stature, fleshing ability and udder quality. His progeny are born slender with great newborn calf shape. These Rangeland sons are a younger sire group this year but are maturing with the consistent build, length, shape, athleticism and structural integrity to thrive on the range.

Basin Rainmaker 2704
Basin Rainmaker 4404
Basin Joy 1036

CTS Remedy 1T01 #
EA Emblynette 7009
EA Emblynette 5241

Basin Rainmaker P175 #
Basin Erica 7520 BV #
Basin Payweight 107S #
Basin Joy 566T
Connealy Thunder #
CTS 7V03 Bellemere Maid 9T02
Koupal Advance 28 #
EA Emblynette 3249



CED	BW	WW	YW	MILK	SC	DOC	HP	CW	MARB	RE	\$M	\$W	\$F	\$G	\$B	\$C
5	0.8	70	126	30	0.94	22	19.1	63	0.55	0.74	79	67	114	48	162	289

Lot 33**LOT 33 Vision Rangeland 3033**

DOB: 1/23/23 • TATT00: 3033 • REG. 20754517

Basin Rainmaker 4404

Ellingson Rangeland
EA Emblynette 7009

S A V Angus Valley 1867 #

Vision Karama 569

Vision Karama 318

Basin Rainmaker 2704

Basin Joy 1036
CTS Remedy 1T01 #
EA Emblynette 5241

S A V Iron Mountain 8066 #

S A V May 2397 #
Connealy Consensus 7229 #
Vision Karama 025

CED	BW	WW	YW	MILK	CW	MARB	REA	\$M	\$W	\$F	\$G	\$B	\$C
7	-0.9	62	119	37	62	0.53	0.89	76	70	114	52	167	293

BW	ADJ. WW	ADJ. YW
82	624	1,221



Heifer Safe. This mating simply works! His full brother was our Lot 1 and second high selling bull in 2023. Lot 33 has been slower to come on but the credentials for an impressive, calving-ease herd bull are still there! As we get closer to sale day, he continues to make great strides and is going to mature with that impressive 'Herd Bull' look with an EPD profile that trumps his full brother. Ranks in the Top 15% BW, 30% SC, 10% CEM, 4% Milk, 1% Claw, 10% Angle, 4% PAP, 25% CW, 20% RE, 25% \$M, 20% \$W, 10% \$F, 25% \$B and 20% \$C. A maternal sister to his dam is featured as Lot 68. His dam records a BR 6@97, WR 6@99 and YR 6@100. Individual BR 94.



Vision Rangeland 2017
Full Brother to Lot 33 Selected by
Abernathy Ranches, Lander, WY

Lot 34**LOT 34 Vision Rangeland 3042**

DOB: 1/31/23 • TATT00: 3042 • REG. 20754510

Basin Rainmaker 4404

Ellingson Rangeland
EA Emblynette 7009

Vision Advance 6009

Vision Jessica 853

Vision Jessica 615

Basin Rainmaker 2704

Basin Joy 1036
CTS Remedy 1T01 #
EA Emblynette 5241

Koupal Advance 28 #

Vision Georgina 448 #
S A V Resource 1441 #
Flag Jessica 90812

CED	BW	WW	YW	MILK	CW	MARB	REA	\$M	\$W	\$F	\$G	\$B	\$C
9	1.9	66	117	32	53	0.7	0.72	76	65	94	57	151	272

BW	ADJ. WW	ADJ. YW
92	681	1,215



Don't shy away from Lot 34 because of his short ears - he's docile and gentle natured! But more importantly he's a really good bull that Tina saved on one of those many cold nights last winter. She remembers that night distinctly and is proud of how Lot 34 has turned out. It's moments like that, that we have a stronger appreciation for the outstanding calf vigor and mothering ability that Tina witnessed. He offers impressive length, dimension, athleticism, disposition and maternal function. His dam records a BR 3@98, WR 3@104 and YR 3@104. His great grandam is our foundation Jessica that records an impressive WR 9@106, YR 8@104 and IMF 7@110.

Lot 35

**LOT 35 Vision Rangeland 3040**

DOB: 1/26/23 • TATT00: 3040 • REG. 20754509

Basin Rainmaker 4404
Ellingson Rangeland
 EA Emblynnette 7009
 Mill Brae Five Star 5045
Vision Burgess 903
 Vision Burgess 646

Basin Rainmaker 2704
 Basin Joy 1036
 CTS Remedy 1T01 #
 EA Emblynnette 5241
 Sitz Wisdom 481T #
 Mill Brae CC&7 Joanie 2122
 Moore 902-Focus 008
 ALC Burgess R16S #

CED	BW	WW	YW	MILK	CW	MARB	REA	\$M	\$W	\$F	\$G	\$B	\$C
5	0.8	49	94	23	41	0.28	0.66	78	47	92	34	125	240

BW	ADJ. WW	ADJ. YW
83	600	1,243



Heifer Safe. A younger sire group in these Rangeland sons that are still maturing. Like Lot 35 they have the right build, shape, length and athleticism needed to thrive and function in most production systems and environments that our customers have. Our Burgess cow family is known for functional longevity and fertility. His great grandam was our foundation and Pathfinder Burgess that earned a lifetime production record of BR 14@102, WR 14@103, YR 11@101 with a 361 day calving-interval. His dam records a BR 2@99, YR 2@100 with a 365 day calving-interval. Individual BR 97.

Lot 36

**LOT 36 Vision Rangeland 3060**

DOB: 2/16/23 • TATT00: 3060 • REG. 20754503

Basin Rainmaker 4404
Ellingson Rangeland
 EA Emblynnette 7009
 K C F Bennett Fortress #
Vision Proud Lassie 906
 Vision Proud Lassie 531 #

Basin Rainmaker 2704
 Basin Joy 1036
 CTS Remedy 1T01 #
 EA Emblynnette 5241
 Connealy Consensus #
 Thomas Patricia 9705
 SITZ Logic Y46 #
 Vision Proud Lassie 911 #

CED	BW	WW	YW	MILK	CW	MARB	REA	\$M	\$W	\$F	\$G	\$B	\$C
6	1.1	69	123	40	57	0.23	0.74	52	74	104	30	134	226

BW	ADJ. WW	ADJ. YW
86	697	1,260



Heifer Safe. A Rangeland son from one of our best cow families known for predictable calving-ease, more milk and faster growing calves. Expect him to deliver strong maternal characteristics and attractive calves with great foot quality and soundness – exactly what you need and desire in a set of quality replacement heifers. On paper he uniquely excels in pounds gained relative to consumption with a Top 25% RADG and 30% DMI EPDs. His 2nd generation Pathfinder grandam records an impressive BR 7@93, WR 7@106, YR 7@102, RE 3@105 and Fat 3@125 with a 375 day calving-interval while being flushed conventionally.



Vision Proud Lassie 531
 Pathfinder Grandam of Lot 36

Lot 37

**LOT 37 Vision Rangeland 3058**

DOB: 2/15/23 • TATT00: 3058 • REG. 20754500

Basin Rainmaker 4404
Ellingson Rangeland
 EA Emblynnette 7009
 LD Capitalist 316 #
Vision Forever Lady 905
 A J Forever Lady 302

Basin Rainmaker 2704
 Basin Joy 1036
 CTS Remedy 1T01 #
 EA Emblynnette 5241
 Connealy Capitalist 028 #
 LD Dixie Erica 2053
 B C Lookout 7024 #
 A J Forever Lady 105

CED	BW	WW	YW	MILK	CW	MARB	REA	\$M	\$W	\$F	\$G	\$B	\$C
8	0.5	60	106	26	44	0.24	0.66	82	63	89	32	121	239

BW	ADJ. WW	ADJ. YW
79	606	1,198



Heifer Safe. A low birth, high \$M, quality individual represented here with an exciting future! Knowing his pedigree and cow family, you can expect more growth than his EPDs indicate. At maturity Lot 37 will be an impressive bull to have in your herd bull battery. He balances reliable calving-ease with a Top 3% HP, 30% SC, 4% PAP and 15% \$M. Dam has earned a 362 day calving-interval with a BR 3@94. Individual BR 92.

Lot 38

**LOT 38 Vision Rangeland 3032**

DOB: 1/18/23 • TATT00: 3032 • REG. 20754511

Basin Rainmaker 4404

Ellingson Rangeland

EA Emblynnette 7009

S A V Ten Speed 3022 #

Vision Miss Dianna 833

Vision Miss Dianna 424 #

Basin Rainmaker 2704

Basin Joy 1036

CTS Remedy 1101 #

EA Emblynnette 5241

A A R Ten X 7008 S A #

S A V Madame Pride 1134 #

Connealy Consensus 7229 #

Vision Miss Dianna 058

CED	BW	WW	YW	MILK	CW	MARB	REA	\$M	\$W	\$F	\$G	\$B	\$C
5	1	62	108	26	43	0.76	0.57	71	60	93	61	154	271

BW	ADJ. WW	ADJ. YW
82	631	1,157



Heifer Safe. Genetically and phenotypically designed to be low birth and feed efficient in a moderate, mature package with increased fertility that can thrive at any altitude! He has the right shape of bone, head and shoulders for his progeny to be born without troubles. You'll appreciate his breed leading EPDs for RADG, DMI, HP and PAP. His dam is a problem free, forage efficient female with a 361 day calving-interval while his Pathfinder grandam boasts an impressive record of BR 8@101, WR 8@107, YR 8@104, IMF 3@114, RE 3@101 and Fat 3@104 with a 366 day calving-interval. Individual BR 94.

LOT 39 Vision Rangeland 3056

DOB: 2/13/23 • TATT00: 3056 • REG. 20754521

Basin Rainmaker 4404

Ellingson Rangeland

EA Emblynnette 7009

Vision Unanimous 1418 #

Vision Evergreen 501

Vision Evergreen 202

Basin Rainmaker 2704

Basin Joy 1036

CTS Remedy 1101 #

EA Emblynnette 5241

Visiontopline Royal Stockman

Vision Edella 665 #

S A V 004 Density 4336 #

ALC Evergreen C29R #

CED	BW	WW	YW	MILK	CW	MARB	REA	\$M	\$W	\$F	\$G	\$B	\$C
9	0.5	57	96	29	36	0.72	0.38	90	64	75	50	124	251

BW	ADJ. WW	ADJ. YW
91	646	1,185



One of the highest \$M bulls in our offering backed by our foundation cow family – Evergreen. Genetically, he excels his contemporaries for heifer pregnancy, milk, \$EN and foot quality. His full sister that sold for \$12,000 to Lindskov LT Ranch is the epitome of a tremendous brood cow in the making! Be assured that his daughters will be the keepin' kind.

**Vision Evergreen 208**

\$12,000 Full Sister to Lot 39 selected by Bryce Lindskov, Isabel, SD in the 2023 NWSS Foundation Angus Sale.

Square B Atlantis 8060

DOB: 8/24/18 • TATT00: 8060 • REG. 19405249



Staying true to our commitment to balanced-trait genetic selection, Square B Atlantis 8060 checks a lot of boxes critical to maternal function, herd longevity and profitability! Atlantis's stellar phenotype, added thickness and dimension are captivating but his true breeding value is realized in his ability to improve scrotal size, heifer pregnancy, efficiency, docility, foot and carcass quality.

Coleman Charlo 0256 #

S A V Rainfall 6846

S A V Blackcap May 4136

Connealy Consensus #

Elbanna of Conanga 1209

Elbasta of Conanga 9703

O C C Paxton 730P #

Bohi Abigale 6014

S A V 8180 Traveler 004 #

S A V May 2397 #

KMK Alliance 6595 187 #

Blinda of Conanga 004

Connealy Forward #

Elba of Conanga 3761 #

REFERENCE SIRE

CED	BW	WW	YW	MILK	SC	DOC	HP	CW	MARB	RE	\$M	\$W	\$F	\$G	\$B	\$C
3	1.3	60	107	27	1.21	22	15.0	33	0.70	0.96	77	61	86	59	144	264

Lot 40

**LOT 40 Vision Atlantis 3017**

DOB: 1/7/23 • TATTOO: 3017 • REG. 20881960

S A V Rainfall 6846
Square B Atlantis 8060
Elbanna of Conanga 1209LV Classen
Vision Bachel Beauty 158
Vision Bachel Beauty 673Coleman Charlo 0256 #
S A V Blackcap May 4136
Connealy Consensus #
Elbasta of Conanga 9703EXAR Classen 1422B
DPL Sandy 3040
Vision Cash 3414
Deppe Bachel Beauty 398

CED	BW	WW	YW	MILK	CW	MARB	REA	\$M	\$W	\$F	\$G	\$B	\$C
-1	3.5	74	119	26	50	.61	.97	65	66	89	57	146	254

BW	ADJ. WW	ADJ. YW
88	728	1,302



A thick-ended stout bull that will bring the added ribeye and weight sale day! Lot 40 also gives you the opportunity to capture market premiums if you sell your cattle on a grid at harvest! Remember to contact a member of our team when you're selling cattle – we will share your information with our growing list of buyers looking for feeder calves and/or replacement quality heifers. Individual stats are WR 101 and YR 100.

Lot 41

**LOT 41 Vision Atlantis 3051**

DOB: 2/6/23 • TATTOO: 3051 • REG. 20754428

S A V Rainfall 6846
Square B Atlantis 8060
Elbanna of Conanga 1209Mill Brae Five Star 5045
Vision Jessica 951 #
Flag Jessica 90812Coleman Charlo 0256 #
S A V Blackcap May 4136
Connealy Consensus #
Elbasta of Conanga 9703Sitz Wisdom 481T #
Mill Brae CC&7 Joanie 2122
Vision Grid Maker 5014
SCR Jessica 50729

CED	BW	WW	YW	MILK	CW	MARB	REA	\$M	\$W	\$F	\$G	\$B	\$C
1	3.1	78	140	25	68	1.18	1.2	50	62	121	90	211	324

BW	ADJ. WW	ADJ. YW
86	730	1,268



Twin with Heifer. A striking, good looking, big hipped bull with exceptional feed efficiency, carcass traits and end-product value! In this offering, he's unmatched in his EPD profile ranking in the Top 15% WW, 10% YW, 3% RADG, 35% DMI, 15% Claw, 15% CW, 10% Marb, 2% RE, 15% Fat, 4% \$F, 5% \$G, 2% \$B and 4% \$C. Added bonus – he's backed by our high performance, carcass-improving Jessica cow family. His Pathfinder dam boasts WR 3@105, YR 3@102 with a 372 day calving-interval while his grandam has earned a WR 9@106, YR 8@104, IMF 7@111 and RE 7@100. Individual stats WR 105 and YR 102.

Lot 42

**LOT 42 Vision Atlantis 3067**

DOB: 3/5/23 • TATTOO: 3067 • REG. 20739335

S A V Rainfall 6846
Square B Atlantis 8060
Elbanna of Conanga 1209Moore 902-Focus 008
Vision Pride 572
SandPoint Pride 1359Coleman Charlo 0256 #
S A V Blackcap May 4136
Connealy Consensus #
Elbasta of Conanga 9703Moore 602-Mytty I Focus 708B
Moore Style 708 #
Connealy Consensus 7229 #
SandPoint Pride 4196

CED	BW	WW	YW	MILK	CW	MARB	REA	\$M	\$W	\$F	\$G	\$B	\$C
1	2.6	71	132	28	43	0.6	0.81	58	61	86	56	142	242

BW	ADJ. WW	ADJ. YW
92	655	1,252



A younger bull in our offering that is catching up to his pen mates. His daughters should be the right kind with a little extra size. His dam is featured as Lot 79 and records a BR 5@99, WR 5@101, YR 5@102, IMF 1@161 and Fat 1@121.

LOT 43 Vision Atlantis 3044

DOB: 2/1/23 • TATTOO: 3044 • REG. 20754462

S A V Rainfall 6846
Square B Atlantis 8060
Elbanna of Conanga 1209
S A V International 2020 #
Vision Blanche 606
Vision Blanche 864 #Coleman Charlo 0256 #
S A V Blackcap May 4136
Connealy Consensus #
Elbasta of Conanga 9703
S A V Harvester 0338 #
S A V Emblynette 5483 #
Connealy Formation 60C
Vision Blanche 425

CED	BW	WW	YW	MILK	CW	MARB	REA	\$M	\$W	\$F	\$G	\$B	\$C
-4	3	61	111	34	51	0.16	0.83	61	62	99	29	127	226

BW	ADJ. WW	ADJ. YW
94	608	1,011



A later-maturing individual with good foot structure and build for the long haul. His dam is one of the most eye-catching and massive cows in our program with a 365 day calving-interval. Visitors always notice her because she is flat out good.

REFERENCE SIRE

Vision Payweight Plus 9019

DOB: 1/13/19 • TATTOO: 9019 • REG. 19584947

In a trio of flush brothers with so much consistency in phenotype, performance and genomics – '9019' had that unmistakable, elite herd bull presence and was the high selling bull in our 2020 Sale. He delivers added frame size, pounds and feeding performance. 9019's daughters have more mature weight and size, but are delivering good results due to their maternal strength rooted in our Evergreen family. His dam, Vision Evergreen 610, is one of our most valued-females and the kind of cow power and genetics you want behind a herd sire!

Basin Payweight 1682 #
Basin Payweight Plus 6048
EXAR Royal Lass 2810

Koupal Advance 28 #
Vision Evergreen 610
Vision Evergreen 407

Basin Payweight 006S #
21AR O Lass 7017
Connealy Consensus 7229 #
Exar Royal Lass 1067

Koupal Juneau 797 #
Koupal Ebonette 734
S A V Bismarck 5682 #
Vision Evergreen 202



CED	BW	WW	YW	MILK	SC	DOC	HP	CW	MARB	REA	\$M	\$W	\$F	\$G	\$B	\$C
9	2.5	97	163	19	1.84	16	10.8	74	0.47	0.78	64	78	119	46	165	278

Lot 44

**LOT 44 Vision Payweight Plus 3016**

DOB: 1/6/23 • TATTOO: 3016 • REG. 20748413

Basin Payweight Plus 6048

Vision Payweight Plus 9019

Vision Evergreen 610

Vision Overdrive 7001

Vision Georgina 929

Vision Georgina 448 #

Basin Payweight 1682 #

EXAR Royal Lass 2810

Koupal Advance 28 #

Vision Evergreen 407

S A V Ten Speed 3022 #

Vision Proud Lassie 531 #

Vision Brushpopper 2426

Vision Georgina 249 #

CED	BW	WW	YW	MILK	CW	MARB	REA	\$M	\$W	\$F	\$G	\$B	\$C
10	1.7	76	133	35	63	0.47	0.78	70	78	102	45	146	259

BW	ADJ. WW	ADJ. YW
86	741	1,323



Heifer Safe. A double-digit calving-ease bull backed by generations of low birth, added performance and maternal function. He'll deliver market topping feeders with high quality replacement heifers! His Overdrive dam is a great young cow earning a BR 2@99, WR 2@105 and YR 2@104. His Pathfinder grandam has earned our respect as one of our best and most consistent producing females with a 365 day calving-interval, BR 8@99, WR 8@109 and YR 7@104. Individual stats BR 100, WR 107 and YW 106.

Lot 45

**LOT 45 Vision Payweight Plus 3041**

DOB: 1/31/23 • TATTOO: 3041 • REG. 20739333

Basin Payweight Plus 6048

Vision Payweight Plus 9019

Vision Evergreen 610

Woodhill Blueprint

Vision Blackcap 017

Vision Blackcap 563

Basin Payweight 1682 #

EXAR Royal Lass 2810

Koupal Advance 28 #

Vision Evergreen 407

Connealy Confidence Plus #

Woodhill Evergreen Z291-B233

Koupal Advance 28 #

AVF Blackcap 6480

CED	BW	WW	YW	MILK	CW	MARB	REA	\$M	\$W	\$F	\$G	\$B	\$C
8	1.9	80	134	18	53	0.07	0.77	68	69	93	26	119	222

BW	ADJ. WW	ADJ. YW
84	674	1,184



Heifer Safe. Genetics and phenotype combine here to make a great cow-maker! Our Payweight Plus and Blueprint daughters are doing a great job for us. They are moderate-framed with perfect udders and great fertility. Lot 45 has that softness and easy-keeping, maternal look to generate an outstanding set of quality replacement heifers.

Lot 46

**LOT 46 Vision Payweight Plus 3045**

DOB: 2/1/23 • TATT00: 3045 • REG. 20748488

Basin Payweight Plus 6048

Vision Payweight Plus 9019

Vision Evergreen 610

Vision Unanimous 1418 #

Vision Georgina 614

Vision Georgina 249 #

Basin Payweight 1682 #

EXAR Royal Lass 2810

Koupal Advance 28 #

Vision Evergreen 407

Visiontopline Royal Stockman

Vision Edella 665 #

S A V 707 Rito 9969 #

Vision Georgina 955

CED	BW	WW	YW	MILK	CW	MARB	REA	\$M	\$W	\$F	\$G	\$B	\$C
6	1.1	64	118	21	41	0.56	0.63	53	57	83	49	132	224

BW	ADJ. WW	ADJ. YW
94	621	1,202



This bull fits well into lower input, forage-oriented systems. His dam and sisters are the epitome of longevity and function. Moderate size, growth and milk EPDs indicate his daughters will fit well into range environments.

LOT 47 Vision Payweight Plus 3014

DOB: 1/6/23 • TATT00: 3014 • REG. 20739347

Basin Payweight 1682 #

Basin Payweight Plus 6048

EXAR Royal Lass 2810

Moore 902-Focus 008

Vision Black Oak 573

Vision Black Oak 142

Basin Payweight 006S #

21AR O Lass 7017

Connealy Consensus 7229 #

Exar Royal Lass 1067

Moore 602-Myttyl Focus 708B

Moore Style 708 #

Vision Tradition S28

Vision Black Oak 518

CED	BW	WW	YW	MILK	CW	MARB	REA	\$M	\$W	\$F	\$G	\$B	\$C
6	0.9	70	118	30	50	0.36	0.33	65	75	90	30	120	221

BW	ADJ. WW	ADJ. YW
82	606	1,003



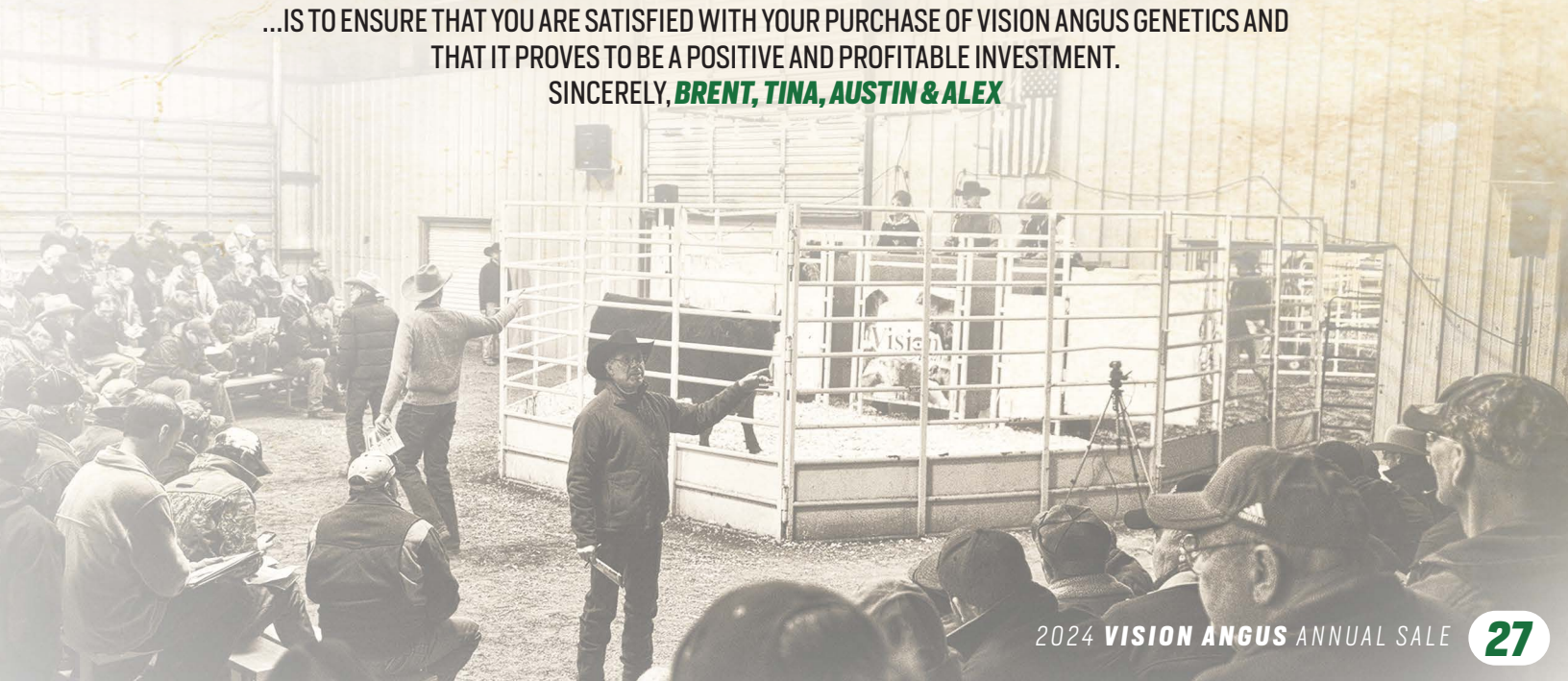
Heifer Safe. A moderate-sized, maternally oriented bull with calving-ease genetics suited for heifers. He combines a light 82 lb birth weight with a BR 94 and is backed by another productive Moore 902-Focus 008 daughter that's earned a BR 5@99.

Vision
Angus

Our Personal Commitment...

...IS TO ENSURE THAT YOU ARE SATISFIED WITH YOUR PURCHASE OF VISION ANGUS GENETICS AND THAT IT PROVES TO BE A POSITIVE AND PROFITABLE INVESTMENT.

SINCERELY, **BRENT, TINA, AUSTIN & ALEX**



Lot 48



The Attractive Duo!

LOTS 48 & 49 ET FULL BROTHERS

Young Dale Believe 46B
Hill Valley Reckoning 931
 Hill Valley Elbina 456

Colburn Primo 5153
SCC SCH Phyllis 893
 SCC Phyllis 052

Young Dale Xcaliber 32X
 Young Dale Grace 126Z
 Mill Coulee Upward 005
 Hill Valley Elbina 928
 Dameron First Class
 Silveiras Saras Dream 1339
 OSU Currency 8173
 SCC Phyllis SSF 682

LOT 48 Vision Reckoning 2087

DOB: 9/24/22 • TATTOO: 2087 • REG. 20748330

CED	BW	WW	YW	MILK	CW	MARB	REA	\$M	\$W	\$F	\$G	\$B	\$C
-3	5.4	56	94	18	24	0.25	0.59	12	31	61	31	92	131

BW	ADJ. WW	ADJ. YW
100	676	1,188



Two full brothers that offer phenotypic excellence and genetic diversity to many of our customers! You can expect them to improve the quality of your next calf crop and to produce more weaning and yearling pounds than what the EPDs suggest! You'll appreciate their design as many cattlemen stake their reputation on how their cattle look and weigh come sale day.

Take note that Lot 48 offers an advantage in age allowing him to cover more cows during the breeding season. He's also sound, functional, long, pounds heavy and perhaps the best individual from what has been one of the most consistent and uniform flushes we've had to date.

LOT 49 Vision Reckoning 3065

DOB: 3/4/23 • TATTOO: 3065 • REG. 20748471

CED	BW	WW	YW	MILK	CW	MARB	REA	\$M	\$W	\$F	\$G	\$B	\$C
7	2.5	59	98	12	28	0.31	0.38	20	38	71	30	100	150

BW	ADJ. WW	ADJ. YW
90	754	1,288



Lot 49



Vision Dr Phil 2025
 \$25,000 Full Brother to Lots 48 & 49
 selected by Griswold Cattle, Stillwater, OK



Vision Phyllis 253
 \$20,000 Full Sister to Lots 48 & 49
 selected by Fitzgerald Angus, Sullivan, IN



Hill Valley Reckoning 931
 Sire of Lots 48-50



SCC SCH Phyllis 893
 Donor Dam of Lots 48 & 49

LOT 50 Vision Reckoning 2085

DOB: 9/15/22 • TATTOO: 2085 • REG. 20748477

Young Dale Believe 46B
Hill Valley Reckoning 931
 Hill Valley Elbina 456
 EXAR Classen 1422B
Seldom Rest Sandy 5089
 Silveiras S Sis Sandy 2354

Young Dale Xcaliber 32X
 Young Dale Grace 126Z
 Mill Coulee Upward 005
 Hill Valley Elbina 928
 Dameron First Class
 EXAR Princess 2006
 Silveiras Style 9303
 K N C Cabin Creek Sandy 804

CED	BW	WW	YW	MILK	CW	MARB	REA	\$M	\$W	\$F	\$G	\$B	\$C
7	2.4	58	90	16	32	0.59	0.31	49	47	73	43	116	199

BW	ADJ. WW	ADJ. YW
77	663	1,140



Age Advantaged. An attractive, good-footed, muscular bull with more service age. He's genetically designed for a low input production system. Not as friendly as we'd like him to be when handled independently, but he's backed 100% with the Vision Angus guarantee!

Create a Vision for your Cow Herd

Lot 51

Vision
Angus

BULLS



LOT 51 Vision Sandman 2082

DOB: 9/13/22 • TATTOO: 2082 • REG. 20870859

EXAR Classen 1422B

Seldom Rest Sandman 6075

Silveiras S Sis Sandy 2354

DDA Dameron Northern Light

Vision Lady 765

Vision Lady 432

Dameron First Class

EXAR Princess 2006

Silveiras Style 9303

K N C Cabin Creek Sandy 804

S A V Brilliance 8077 #

Dameron Northern Miss 0109

Visiontopline Royal Stockman

Top Line Lady 9114

CED	BW	WW	YW	MILK	CW	MARB	REA	\$M	\$W	\$F	\$G	\$B	\$C
-3	5.7	75	123	16	57	0.13	0.6	28	44	109	28	137	206

BW	ADJ. WW	ADJ. YW
83	818	1,356



Age Advantaged. A tremendously stout, rugged, massive and easy-keeping bull with a very docile and gentle nature. Among these fall bulls - managed with minimal inputs, Lot 51 crushed the scales earning an 818 Adj. WW and 1,356 Adj. YW. He's genetically designed to increase pay weight and gain relative to consumption which adds profit to your bottom line. He's backed by the Lady cow family which has been good to us consistently delivering cattle with extra performance and fleshing ability.

LOT 52 Vision Express 2083

DOB: 9/13/22 • TATTOO: 2083 • REG. 20748299

Sma Watchout 482

Conley Express 7211

DPL Sandy 3040

Colburn Primo 5153

SCC SCH Phyllis 893

SCC Phyllis 052

Silveiras Watchout 0514

2K Beauty 961

Silveiras Style 9303

K N C Cabin Creek Sandy 804

Dameron First Class

Silveiras Saras Dream 1339

OSU Currency 8173

SCC Phyllis SSF 682

CED	BW	WW	YW	MILK	CW	MARB	REA	\$M	\$W	\$F	\$G	\$B	\$C
0	1.7	56	95	23	23	0.4	0.09	20	49	69	34	103	154

BW	ADJ. WW	ADJ. YW
79	613	1,101



Age Advantaged. A good-lookin' individual that offers more age and coverage ability during the breeding season. He's recommended for mature cows with a terminal emphasis.

Lot 53



LOT 53 Vision Alpha 3039

DOB: 1/26/23 • TATTOO: 3039 • REG. 20748293

Dameron First Class

Collison Alpha 028

CS Georgina 919

PVF Insight 0129 #

Vision Lady 649

Vision Lady 432

EXG RS First Rate S903 R3

Dameron Northern Miss 3114

Exar Lutton 1831 #

Southern Georgina 1094

S A V Brilliance 8077 #

PVF Missie 790

Visiontopline Royal Stockman

Top Line Lady 9114

CED	BW	WW	YW	MILK	CW	MARB	REA	\$M	\$W	\$F	\$G	\$B	\$C
-5	4.8	64	106	21	48	0.34	1.01	41	45	101	45	146	230

BW	ADJ. WW	ADJ. YW
98	681	1,219



Offers the growth, power and gentle nature of our Lady cow family. His feeder cattle should be attractive with added thickness and possess the ability to perform and convert well post-weaning. Ideally suited for mature cows with emphasis on terminal, end-product traits.

LOT 54 Vision Alpha 3023

DOB: 1/10/23 • TATTOO: 3023 • REG. 20748419

Dameron First Class

Collison Alpha 028

CS Georgina 919

B C Lookout 7024 #

Waf Missie 304

WAF Missie 736

EXG RS First Rate S903 R3

Dameron Northern Miss 3114

Exar Lutton 1831 #

Southern Georgina 1094

O C C Legend 616L

Gibbet Hill Mignonne E37

Lemmon Newline C804 #

Waf Rally Missie 554 #

CED	BW	WW	YW	MILK	CW	MARB	REA	\$M	\$W	\$F	\$G	\$B	\$C
7	-0.6	35	63	18	14	0.12	0.45	17	28	59	26	85	127

BW	ADJ. WW	ADJ. YW
83	696	1,171



Heifer Safe. A predictable calving-ease bull with added length, stretch, eye-appeal and outcross genetics. He combines a light 83 lb birth weight and negative BW EPD backed by a dam with a BR 4@99. His dam is the epitome of efficiency and longevity with a superior udder and foot quality. Individual BR 97.

Lot 55



LOT 55 Vision Epic L336

DOB: 1/25/23 • TATTOO: L336 • REG. Half Blood SimAngus

WS All-Around Z35

OMF Epic E27

OMF Time Less B100

PVF Insight 0129 #

Vision Pride 666

Vision Pride 392

WS Beef King W107

CDI MS High Roller 39W

OMF Commander Y69

OMF Timeless Z21

S A V Brilliance 8077 #

PVF Missie 790

Connealy Confidence 0100 #

SandPoint Pride 1290

CED	BW	WW	YW	MILK	MARB	REA
12	-1.1	73	114	19	.20	.79

BW	ADJ. WW	ADJ. YW
93	645	1,220

Half-blood Simmental with all the looks and growth of his beautiful and massive dam. He's a later maturing individual with the genetics to infuse hybrid vigor and produce fancy, attractive feeder cattle. His sire - OMF Epic is one of the most proven and popular Simmental sires and is featured by ST Genetics. Lot 55 will deliver predictable performance backed by generations of great maternal cows.

Featuring 16 Angus Heifers

Lot 56

**LOT 56 Vision Delia 324**

DOB: 1/9/23 • TATTOO: 324 • REG. 20755425

Bar R Jet Black 5063
LAR Man In Black
 JMB Maxine TG 2131 #
 Mill Brae Comrade 6184
Mill Brae 6184 Delia 8305
 Mill Brae SW Delia 6263

Connealy Black Granite #
 Bar R Iris Anita 0113
 Sitz Top Game 561X #
 JMB Maxine Deluxe 9034 #
 Connealy Comrade 1385 #
 Mill Brae Obj Blackcap 9244 #
 Sitz Wisdom 481T #
 Mill Brae Pro Delia 1104

CED	BW	WW	YW	MILK	CW	MARB	REA	\$M	\$W	\$F	\$G	\$B	\$C
2	4.5	86	146	32	73	1.03	0.69	66	77	105	68	173	290

BW	ADJ. WW	ADJ. YW
93	761	1,076



One of the elite breeding pieces offered this sale season that commands your attention in the pen and on paper! Phenotypically she's dominating from any angle blending performance, mass, femininity and structural soundness. Genetically she offers a superior balance of growth, maternal and end-product value. The only female of this flush and as we all know – it only takes one and she's a Good One! Her flush brothers are selling as Lots 17-19 and a maternal brother by Deep River as Lot 5. Top 4% WW, 10% YW, 10% SC, 15% Milk, 30% PAP, 10% CW, 25% Marb, 10% \$W, 15% \$F, 25% \$G, 20% \$B and 15% \$C. Individual WR 113 and YR 112.

Lot 57

**LOT 57 Vision Silver 307**

DOB: 1/4/23 • TATTOO: 307 • REG. 20755287

Bar R Jet Black 5063
LAR Man In Black
 JMB Maxine TG 2131 #
 LD Capitalist 316 #
Vision Silver 016
 Vision Silver 652

Connealy Black Granite #
 Bar R Iris Anita 0113
 Sitz Top Game 561X #
 JMB Maxine Deluxe 9034 #
 Connealy Capitalist 028 #
 LD Dixie Erica 2053
 Moore 902-Focus 008
 Vision Silver 047

CED	BW	WW	YW	MILK	CW	MARB	REA	\$M	\$W	\$F	\$G	\$B	\$C
10	2.1	80	136	34	63	0.87	0.72	79	84	96	60	155	280

BW	ADJ. WW	ADJ. YW
66	696	1,005



The 'silver' lining in our female offering with worlds of genetic potential. The added bonus – you're going to love her when you see her! She's the more moderate Man In Black daughter exceptional in her design, angles, fleshing ability and stoutness. Her mating possibilities are endless and she's bound to knock it out of the park regardless your selection. Her dam earned a 346 day calving-interval with a BR 2@93. Top 20% CED, 10% WW, 15% YW, 10% SC, 25% CEM, 10% Milk, 20% Claw, 25% CW, 15% \$M, 2% \$W and 25% \$C.

Lot 58

**LOT 58 Vision Karama 320**

DOB: 1/6/23 • TATTOO: 320 • REG. 20755426

Bar R Jet Black 5063
LAR Man In Black
 JMB Maxine TG 2131 #
 S A V Platinum 0010 #
Vision Karama 819
 Vision Karama 430 #

Connealy Black Granite #
 Bar R Iris Anita 0113
 Sitz Top Game 561X #
 JMB Maxine Deluxe 9034 #
 S A V Pioneer 7301 #
 S A V Greystone Jannet 5345 #
 Vision Unanimous 1418 #
 Vision Karama 860

CED	BW	WW	YW	MILK	CW	MARB	REA	\$M	\$W	\$F	\$G	\$B	\$C
1	4.1	100	171	15	85	0.45	0.88	52	71	121	46	168	270

BW	ADJ. WW	ADJ. YW
92	767	1,089



An easy fleshing, performance power house with a robust rib cage coupled with a big top and hip. Her phenotypic dominance and EPD profile will provide her new owner with immense opportunities! Her dam is a full sister to Vision Emperial 6003 whose daughters are worth their weight in gold collectively earning a 103 ratio on their calves at weaning. Dam posts a 363 day calving-interval with a BR 4@96 and WR 4@103 while her grandam has earned a BR 5@99, WR 5@104, YR 4@101, IMF 3@106, RE 3@101 and Fat 3@107. Top 1% WW, 1% YW, 25% SC, 10% Doc, 20% Claw, 10% Angle, 2% CW, 25% RE, 20% \$W, 4% \$F, 25% \$B and 30% \$C. Phenomenal individual stats with WR 122 and YR 117



Vision Evergreen 205
Maternal Sister to Lot 59

LOT 59 Vision Evergreen 362

DOB: 2/8/23 • TATT00: 362 • REG. 20755420

Bar R Jet Black 5063
LAR Man In Black
JMB Maxine TG 2131 #
Vision Overdrive 7001
Vision Evergreen 937
Vision Evergreen 501

Connealy Black Granite #
Bar R Iris Anita 0113
Sitz Top Game 561X #
JMB Maxine Deluxe 9034 #
S A V Ten Speed 3022 #
Vision Proud Lassie 531 #
Vision Unanimous 1418 #
Vision Evergreen 202

CED	BW	WW	YW	MILK	CW	MARB	REA	\$M	\$W	\$F	\$G	\$B	\$C
10	0.8	73	131	25	49	0.92	0.56	75	70	86	64	151	271

BW	ADJ. WW	ADJ. YW
79	586	858



All of the pieces come together to make this heifer a complete breeding piece to strengthen any breeding program! Her EPD profile is in perfect balance from birth to yearling to foot quality to maternal function to carcass. Lot 59 carries the rock solid, productive and historic Evergreen name. Her Overdrive dam is an impressive female recording BR 3@97, WR 3@102, YR 2@104, IMF 1@104, RE 1@101 and Fat 1@112. Top 20% CED, 25% WW, 20% YW, 10% SC, 25% CEM, 15% Claw, 15% Angle, 30% Marb, 20% \$M, 20% \$W, 30% \$G and 30% \$C. Evergreen 362 has all the elements to be a money-maker. Invest with confidence!

Lot 60



LOT 60 Vision Evergreen 339

DOB: 1/16/23 • TATT00: 339 • REG. 20766639

S A V Renown 3439 #
Coleman Glacier 041
Coleman Donna 439 #
Poss Maverick
Vision Evergreen 028
Vision Evergreen 620

Rito 707 of Ideal 3407 7075
S A V Blackcap May 4136
GDAR Game Day 449 #
Coleman Donna 714
Basin Payweight 1682 #
Poss Pride 5163
PVF Insight 0129 #
Vision Evergreen 202

CED	BW	WW	YW	MILK	CW	MARB	REA	\$M	\$W	\$F	\$G	\$B	\$C
0	4.1	69	113	23	38	0.2	0.59	71	58	77	29	106	208

BW	ADJ. WW	ADJ. YW
90	622	913



We thought this would be a unique mating to provide do-ability and fleshing ability at the highest level. Her pedigree is loaded with iconic names of bulls and cows that represent the best of Angus genetics! Lot 60 should have the body type to function in any environment and become a maternal masterpiece. A maternal sister was the second high selling heifer in our 2023 sale. Her dam is featured as Lot 76. Top 30% WW, 20% Doc, 15% Claw, 10% Angle and 30% \$M.

LOT 61 Vision Evergreen 343

DOB: 2/14/23 • TATT00: 343 • REG. 20754544

Woodhill Blueprint
Myers Fair-N-Square M39
Myers Miss Beauty M136
K C F Bennett Fortress #
Vision Evergreen 917 #
Vision Evergreen 203

Connealy Confidence Plus #
Woodhill Evergreen Z291-B233
Connealy Thunder #
Myers Miss Beauty M476 #
Connealy Consensus #
Thomas Patricia 9705
S A V 004 Density 4336 #
ALC Evergreen C29R #

CED	BW	WW	YW	MILK	CW	MARB	REA	\$M	\$W	\$F	\$G	\$B	\$C
-8	5.5	96	159	17	63	0.71	0.31	40	66	97	51	148	232

BW	ADJ. WW	ADJ. YW
90	743	946



Performance oriented heifer destined to deliver more pounds. And, we'd expect nothing less coming from an Evergreen! Our first Fair-N-Square daughters in production exhibit great mothering ability and udder quality with ample milk and fleshing ability. Lot 61 records an impressive 118 WR & 102 YR. Her Pathfinder dam has earned a 373 day calving-interval with a WR 3@106 and YR 3@101. While her Density grandam has consistently produced top end bulls. Top 1% WW, 2% YW, 30% SC, 20% Claw, 25% CW, 30% \$W and 30% \$F.



Lot 62

**LOT 62 Vision Erica 337**

DOB: 1/13/23 • TATT00: 337 • REG. 20754538

Ellingson Three Rivers 8062

Ellingson Deep River

EA Primrose 5083

Vision Imperial 6003

Vision Erica 943 #

AVF Erica 8360

Ellingson Homestead 6030

EA Emblynette 6279

Koupal Advance 28 #

EA Primrose 3102 #

S A V Platinum 0010 #

Vision Karama 430 #

S A V Bismarck 5682 #

AVF Erica 0248

CED	BW	WW	YW	MILK	CW	MARB	REA	\$M	\$W	\$F	\$G	\$B	\$C
2	4.3	86	145	29	80	0.72	0.5	55	72	117	51	168	273

BW	ADJ. WW	ADJ. YW
84	670	977



An elite package genetically balanced for three-dimensional growth, milk and a more moderate mature package! Her Imperial Pathfinder dam is one of our best females with a 364 day calving-interval and a fantastic progeny record of WR 3@110 and YR 3@109. We have only a few Imperial daughters but they're worth their weight in gold collectively ratioing 103 on their calves at weaning. Her grandam, and dam of Lot 63, is a model of efficiency and fertility with a 364 day calving-interval, BR 11@99 and WR 11@101. Top 4% WW, 10% YW, 2% SC, 30% Milk, 35% Claw, 10% Angle, 10% PAP, 4% CW, 15% \$W, 10% \$F, 25% \$B and 30% \$C. She records impressive stats with a BR 101, WR 106 and YR 105.

Lot 63

**LOT 63 Vision Erica 347**

DOB: 1/19/23 • TATT00: 347 • REG. 20754558

Ellingson Three Rivers 8062

Ellingson Deep River

EA Primrose 5083

S A V Bismarck 5682 #

AVF Erica 8360

AVF Erica 0248

Ellingson Homestead 6030

EA Emblynette 6279

Koupal Advance 28 #

EA Primrose 3102 #

G A R Grid Maker #

S A V Abigale 0451

S A V 8180 Traveler 004 #

AVF Erica 8030

CED	BW	WW	YW	MILK	CW	MARB	REA	\$M	\$W	\$F	\$G	\$B	\$C
-1	4.6	91	157	18	80	0.39	0.66	25	62	126	41	167	242

BW	ADJ. WW	ADJ. YW
84	726	1,070



One rewarding aspect of breeding Angus cattle is to witness the success of a herd matron and how she passes on her production and phenotypic traits to her daughters. Lot 63's dam has made her mark in the Vision cow herd with several daughters and granddaughters while maintaining a 364 day calving-interval with a BR 11@99 and WR 11@101. This allows us to part with what may be one of the classiest and highest EPD growth females the Erica line has produced. She boasts incredible individual stats with a BR 101, WR 115 and YR 115. Top 2% WW, 3% YW, 2% SC, 3% \$F and 25% \$B.

Lot 64

**LOT 64 Vision Ms Product 321**

DOB: 1/7/23 • TATT00: 321 • REG. 20754526

Ellingson Three Rivers 8062

Ellingson Deep River

EA Primrose 5083

Moore 902-Focus 008

Vision Ms Product 962 #

JH Ms Product A100

Ellingson Homestead 6030

EA Emblynette 6279

Koupal Advance 28 #

EA Primrose 3102 #

Moore 602-Mytty I Focus 708B

Moore Style 708 #

Connealy Final Product #

P R 1363132-810

CED	BW	WW	YW	MILK	CW	MARB	REA	\$M	\$W	\$F	\$G	\$B	\$C
2	3.1	79	139	30	71	0.35	0.35	52	66	111	34	145	240

BW	ADJ. WW	ADJ. YW
89	703	993



Striking angulation and lines with a bold center body and extra length in a classy package! She's the front pasture kind that will have attractive, growthy calves. Genetically she's loaded with productive, proven and attractive cows. Her highly productive Pathfinder dam boasts a 363 day calving-interval with a WR 3@111 and YR 3@104. The Moore 902-Focus 008 daughters continue to rise to the top and collectively average 103 weaning ratio on 113 calves in four herds. Top 15% WW, 15% YW, 10% SC, 15% HP, 3% CEM, 25% Milk, 20% Angle, 25% PAP, 10% CW, 25% \$W and 15% \$F. Individual stats WR 111 and YR 106.

LOT 65 Vision Primrose 335

DOB: 1/13/23 • TATTOO: 335 • REG. 20739350

Basin Payweight Plus 6048
Vision Payweight Plus 9019
 Vision Evergreen 610
 Vision Overdrive 7001
Vision Primrose 018
 Vision Primrose 665

Basin Payweight 1682 #
 EXAR Royal Lass 2810
 Koupal Advance 28 #
 Vision Evergreen 407
 S A V Ten Speed 3022 #
 Vision Proud Lassie 531 #
 Vision Unanimous 1418 #
 Sandpoint Primrose 8812

CED	BW	WW	YW	MILK	CW	MARB	REA	\$M	\$W	\$F	\$G	\$B	\$C
11	1.5	84	147	30	59	0.19	0.54	62	80	96	27	123	222

BW	ADJ. WW	ADJ. YW
83	639	938



This breeding piece blends two of our most productive and prolific cow families at Vision Angus – Evergreen and Primrose. She'll be a problem-free investment that you can rely on to efficiently deliver the goods, breed back and become one of your staple bread winners. Her Overdrive dam records a 351 day calving-interval with a WR 2@103, YR 2@101 while her grandam has earned an impressive 366 day calving-interval and WR 5@107 and YR 5@108. This is the same Primrose cow family that produced N Bar Emulation EXT. Top 15% CED, 10% WW, 10% YW, 3% SC, 1% CEM, 25% Milk, 15% Angle, 20% PAP, 30% CW, 4% \$W and 30% \$F. Individual stats WR 101 and YR 100.

LOT 66 Vision Jessica 326

DOB: 1/9/23 • TATTOO: 326 • REG. 20739349

Basin Payweight Plus 6048
Vision Payweight Plus 9019
 Vision Evergreen 610
 Vision Grid Maker 5014
Flag Jessica 90812
 SCR Jessica 50729

Basin Payweight 1682 #
 EXAR Royal Lass 2810
 Koupal Advance 28 #
 Vision Evergreen 407
 G A R Grid Maker #
 Vision Erica 760
 Connealy Right Direction 3499
 S A Jessica 1409

CED	BW	WW	YW	MILK	CW	MARB	REA	\$M	\$W	\$F	\$G	\$B	\$C
1	4.1	85	156	31	87	0.62	0.77	49	68	141	51	192	298

BW	ADJ. WW	ADJ. YW
93	769	999



Tremendous performance, growth & pounds of weaned calf represented here! Four maternal sisters record phenomenal progeny weaning ratios of 2@115, 2@106, 3@110 and 5@104! Her dam is our foundation Jessica earning an impressive progeny record of WR 9@106, YR 8@104 and IMF 7@110. Top 5% WW, 3% YW, 2% RADG, 45% DMI, 20% Milk 20% Doc, 30% Angle, 15% PAP, 2% CW, 25% \$W, 1% \$F, 10% \$B and 15% \$C. Impressive individual stats of WR 122 and YR 107.



Flag Jessica 90812
 Dam of Lot 66

LOT 67 Vision Victoria 338

DOB: 1/14/23 • TATTOO: 338 • REG. 20739346

Basin Payweight Plus 6048
Vision Payweight Plus 9019
 Vision Evergreen 610

S A V Resource 1441 #
Vision Victoria 520 #
 Flag Victoria 90761

Basin Payweight 1682 #
 EXAR Royal Lass 2810
 Koupal Advance 28 #
 Vision Evergreen 407

Rito 707 of Ideal 3407 7075
 S A V Blackcap May 4136
 Vision Grid Maker 5014
 SCR Victoria 4505

CED	BW	WW	YW	MILK	CW	MARB	REA	\$M	\$W	\$F	\$G	\$B	\$C
6	2.1	71	125	16	45	0.48	0.75	45	56	90	44	133	218

BW	ADJ. WW	ADJ. YW
90	557	851



A productive, no hassle pedigree with the credentials to deliver more pounds at weaning. A maternal sister in production is doing an outstanding job and her Pathfinder dam boasts a 366 day calving-interval with a WR 7@101, YR 7@101, IMF 4@109, RE 4@108 and Fat 4@120. Top 25% WW, 30% YW and 30% SC.

LOT 68 Vision Karama 348

DOB: 1/20/23 • TATTOO: 348 • REG. 20754620

Ellingson Homestead 6030
Ellingson Three Rivers 8062
 EA Emblynnette 6279
 Connealy Consensus 7229 #
Vision Karama 318
 Vision Karama 025

CTS Remedy 1T01 #
 EA Erica 1082
 Ellingson Chaps 4095 #
 EA Emblynnette 2159 #
 Connealy Consensus #
 Blue Lilly of Conanga 16
 Double AA Old Post Bandolier
 Vision Karama 534

CED	BW	WW	YW	MILK	CW	MARB	REA	\$M	\$W	\$F	\$G	\$B	\$C
-14	6.9	92	153	16	76	0.54	0.85	56	59	123	53	176	284

BW	ADJ. WW	ADJ. YW
97	708	983



Productive power represented here that will generate a sizeable return on your investment! She's stout, functional and correct made just like her Consensus dam. Her maternal sister produced the second high selling bull in 2023 and full brother to Lot 33 that leads off the bulls sired by Ellingson Rangeland. Top 2% WW, 4% YW, 4% Doc, 10% Claw, 3% Angle, 10% CW, 25% RE, 4% \$F, 20% \$B and 25% \$C. Impressive individual performance WR 112 and YR 105.



AgRisk
 ADVISORS®

www.AgRiskAdvisors.com

**Good genetics are an investment,
 AgRisk Advisors has the tools to
 help you protect it.**

- PASTURE, RANGELAND, FORAGE
- LIVESTOCK RISK PROTECTION
- ANNUAL FORAGE

CONTACT AN ADVISOR TODAY!



Bret.Gum@cropins.net
(620)952-2343

The information contained herein is not an offer to sell insurance. No binder, insurance policy, change, addition, and/or deletion to insurance coverage will be effective unless and until confirmed directly with a licensed agent. Please note any proposal of insurance we may present to you will be based upon the values developed and exposures to loss disclosed to us by you. All coverages are subject to the terms, conditions and exclusions of the actual policy issued. Not all policies or coverages may be available in every state. All insurance products are offered through Silveus Insurance Group, Inc.

Lot 69

**LOT 69 Vision Sandy 357**

DOB: 2/5/23 • TATT00: 357 • REG. 20748329

Young Dale Believe 46B
Hill Valley Reckoning 931
 Hill Valley Elbina 456

5T Power Chip 4790
Vision Sandy 061
 Seldom Rest Sandy 5089

Young Dale Xcaliber 32X
 Young Dale Grace 126Z
 Mill Coulee Upward 005
 Hill Valley Elbina 928

EXAR Blue Chip 1877B
 5T Miss Vix 8002
 EXAR Classen 1422B
 Silveiras S Sis Sandy 2354

CED	BW	WW	YW	MILK	CW	MARB	REA	\$M	\$W	\$F	\$G	\$B	\$C
7	2.4	63	102	17	29	0.55	0.42	41	49	64	43	107	180

BW	ADJ. WW	ADJ. YW
72	596	860



Here's a pedigree stacked top and bottom with phenotypic excellence! Her donor grandam, Seldom Rest Sandy 5089, offers the genetics that have dominated the Angus show ring for the last decade. Lot 69's dam and maternal sister are moderate-framed, easy-keeping, feminine females with beautiful udders. Her dam earned an impressive 327 day calving-interval and a BR 2@86. Lot 69 posted an individual BR 89.

LOT 70 Vision Honey Bear 376

DOB: 4/1/23 • TATT00: 376 • REG. 20748503

Young Dale Believe 46B
Hill Valley Reckoning 931
 Hill Valley Elbina 456

TopLine Vision Fly Over 1395

Vision Honey Bear 450

WAF Honey Bear 251 #

Young Dale Xcaliber 32X
 Young Dale Grace 126Z
 Mill Coulee Upward 005
 Hill Valley Elbina 928

Silveiras Style 9303
 Top Line Ellie 0635
 WAF Grid Topper 7110
 Waf Lass 042

CED	BW	WW	YW	MILK	CW	MARB	REA	\$M	\$W	\$F	\$G	\$B	\$C
10	1.9	56	100	16	32	0.21	0.24	65	47	72	21	93	186

BW	ADJ. WW	ADJ. YW
78	632	Too Young



Very seldom do we part with the Honey Bear females! For over a decade, they continue to be problem-free, highly productive and fertile females. They may be smaller statured, but they are mighty producers! At 10 years of age, her dam will calve AI again and records BR 6@99, WR 6@102, YR 4@102, IMF 2@106, RE 2@107 and Fat 2@116. Her Pathfinder grandam earned an impressive progeny record of BR 4@99, WR 4@110, YR 3@107, IMF 4@107 and Fat 4@107. Lot 70 records an individual 93 BR and 100 WR. Top 20% CED, 2% SC, 10% EN, 3% Claw and 20% Angle.



Vision Honey Bear 740
 Maternal Sister to Lot 70

LOT 71 Vision Victoria 378

DOB: 4/15/23 • TATT00: 378 • REG. 20748268

Poss Maverick
Vision Maverick 1033
 AVF Wendy 7033

Vision First Round 2545

Vision Victoria 088

Vision Victoria 408

Basin Payweight 1682 #
 Poss Pride 5183
 Buford AVF All Purpose 4700
 AVF Wendy 287

VA First Round
 Bear MtnTM Forever Lady 8097
 TopLine Vision Fly Over 1395
 Vision Victoria 208

CED	BW	WW	YW	MILK	CW	MARB	REA	\$M	\$W	\$F	\$G	\$B	\$C
-8	5.1	74	110	19	49	0.56	0.51	32	56	95	48	143	217

BW	ADJ. WW	ADJ. YW
92	702	Too Young



The youngest heifer in our sale offering with a bright future! She's a classy female that balances good looks with a great disposition, early performance and a moderate mature size. Her genetics and phenotype offer tremendous versatility to earn a return on your investment. Top 20% WW and 30% Doc.



Vision Maverick 1033
 Service Sire of Lots 72-78, 81

Featuring 10 Bred Cows

Lot 72

**LOT 72 WAR Ruby D206 J319**

DOB: 3/7/21 • TATT00: J319 • REG. 20231160

Basin Rainmaker 2704
Basin Rainmaker 4404
 Basin Joy 1036

Connealy Black Granite #
WAR Black Granite D206 Y227
 WAR Aberdeen Y227 3212

Basin Rainmaker P175 #
 Basin Erica 7520 BV #
 Basin Payweight 107S #
 Basin Joy 5661

Connealy Consensus 7229 #
 Eura Elga of Conanga 9109 #
 TC Aberdeen 759 #
 W A R Forefront 3212 3006

CED	BW	WW	YW	MILK	CW	MARB	REA	\$M	\$W	\$F	\$G	\$B	\$C
8	1.7	68	118	31	46	0.64	0.52	76	70	85	50	134	250



An elegant Rainmaker 4404 daughter with a super disposition and a striking presence! Unfortunately, having twins set her back enough to calve outside our window creating an opportunity for you to capitalize on her genetic potential. Top 4% SC, 15% HP, 20% Milk, 15% Claw, 20% \$M and 20% \$W. Preg checked safe to Vision Maverick 0033 due April 29th.

Lot 73

**LOT 73 Vision Karama 119**

DOB: 1/12/21 • TATTOO: 119 • REG. 20110886

S A V Ten Speed 3022 #

Vision Overdrive 7001

Vision Proud Lassie 531 #

S A V Platinum 0010 #

Vision Karama 811

Vision Karama 430 #

A A R Ten X 7008 S A #

S A V Madame Pride 1134 #

SITZ Logic Y46 #

Vision Proud Lassie 911 #

S A V Pioneer 7301 #

S A V Greystone Jannet 5345 #

Vision Unanimous 1418 #

Vision Karama 860

CED	BW	WW	YW	MILK	CW	MARB	REA	\$M	\$W	\$F	\$G	\$B	\$C
11	-0.5	44	87	20	23	0.51	0.2	47	42	70	35	106	184



You'll appreciate this young Overdrive daughter for her femininity, angularity and breed character. Her dam is a full sister to Vision Emperial 6003 whose progeny have earned a 100 BR, 102 WR, 102 YR, 104 SC with daughters collectively recording a 103 weaning ratio. Her Pathfinder grandam boasts a progeny record of BR 5@99, WR 5@104, YR 4@101, IMF 3@105, RE 3@101 and Fat 3@106. You can count on the Overdrive daughters to be productive as they record an average 104 weaning ratio. Top 15% CED, 15% BW and 20% SC. Preg checked safe to Vision Maverick 1033 due April 11th.

Lot 74

**LOT 74 Vision Karama 120**

DOB: 1/14/21 • TATTOO: 120 • REG. 20109180

Connealy Confidence Plus #

Woodhill Blueprint

Woodhill Evergreen Z291-B233

S A V Angus Valley 1867 #

Vision Karama 569

Vision Karama 318

Connealy Confidence 0100 #

Elbanna of Conanga 1209

Tehama Sierra Cut 2118

Woodhill Evergreen U6-Z291

S A V Iron Mountain 8066 #

S A V May 2397 #

Connealy Consensus 7229 #

Vision Karama 025

CED	BW	WW	YW	MILK	CW	MARB	REA	\$M	\$W	\$F	\$G	\$B	\$C
11	-1.6	57	104	30	37	0.59	0.49	69	66	82	49	131	239



It's difficult to part with this young April bred female. This Blueprint daughter weaned her first calf with a 108 WR and 103 YR. Maternal brothers are Lot 33 - the lead off Rangeland son and the second high selling Lot 1 in our 2023 sale. A full sister was selected by Abernathy Ranches, Lander, WY. We're confident she'll earn her keep and be highly productive! Top 15% CED, 5% BW, 25% Milk, 30% EN, 30% Doc, 15% Claw, 30% \$M and 20% \$W. Preg checked safe to Vision Maverick 1033 due April 6th.

LOT 75 Vision Barbara 147

DOB: 2/9/21 • TATTOO: 147 • REG. 20115675

Basin Payweight Plus 6048

Vision Payweight Plus 9019

Vision Evergreen 610

Moore 902-Focus 008

Vision Barbara 675

Lafllins Barbara 2102

Basin Payweight 1682 #

EXAR Royal Lass 2810

Koupal Advance 28 #

Vision Evergreen 407

Moore 602-Mytty I Focus 708B

Moore Style 708 #

S A V Final Answer 0035 #

Lafllins Barbara 0117

CED	BW	WW	YW	MILK	CW	MARB	REA	\$M	\$W	\$F	\$G	\$B	\$C
5	1	70	120	23	49	1.11	0.44	79	68	90	70	160	287



A three-year-old with an impressive EPD tabulation for performance, foot quality, carcass traits and dollar values. She produced her first calf with a 89 BR, 98 WR and 104 YR. Her dam is a highly productive Moore 902-Focus 008 daughter recording WR 4@105, YR 3@102, IMF 1@146, RE 1@112 and Fat 1@116. Top 20% WW, 20% YW, 25% CEM, 15% Claw, 1% Angle, 30% CW, 10% Marb, 10% \$M, 15% \$W, 10% \$G, 20% \$B and 10% \$C. Preg checked safe to Vision Maverick 1033 due April 27th.



Lot 74

Lot 72

Lot 76

**LOT 76 Vision Evergreen 028**

DOB: 1/15/20 • TATT00: 028 • REG. 19858323

Basin Payweight 1682 #

Poss Maverick

Poss Pride 5163

PVF Insight 0129 #

Vision Evergreen 620

Vision Evergreen 202

Basin Payweight 006S #

21AR O Lass 7017

Poss Hoover Dam 2509

S A V Brilliance 8077 #

PVF Missie 790

S A V 004 Density 4336 #

ALC Evergreen C29R #

CED	BW	WW	YW	MILK	CW	MARB	REA	\$M	\$W	\$F	\$G	\$B	\$C
-5	4.9	78	136	14	63	1.06	0.69	32	47	123	72	195	285



A forage efficient, stout featured Maverick daughter with worlds of dimension in a moderate, carcass-improving package. Her first daughter was the second high selling heifer in our 2023 sale and her second is the Lot 60 Glacier heifer. Top 10% WW, 10% YW, 3% RADG, 35% DMI, 10% Doc, 4% Angle, 10% CW, 10% Marb, 30% RE, 2% \$F, 10% \$G, 2% \$B and 10% \$C. Preg checked safe to Vision Maverick 1033 due April 25th.

Lot 77

**LOT 77 Vision Erica 040**

DOB: 1/19/20 • TATT00: 040 • REG. 19854411

Sitz Wisdom 481T #

Mill Brae Five Star 5045

Mill Brae CC&7 Joanie 2122

S A V Bismarck 5682 #

AVF Erica 8360

AVF Erica 0248

Connealy Onward #

Sitz Elluna Elite 94P

SydGen C C & 7 #

Mill Brae 1407 Joanie 5139

G A R Grid Maker #

S A V Abigale 0451

S A V 8180 Traveler 004 #

AVF Erica 8030

CED	BW	WW	YW	MILK	CW	MARB	REA	\$M	\$W	\$F	\$G	\$B	\$C
8	1.9	62	124	24	54	0.48	0.71	47	51	106	45	151	243



A moderate birth, higher growth young cow that offers a lot of breeding flexibility. Our Mill Brae Five Star 5045 daughters have collectively earned a 101 progeny weaning ratio. Her Bismarck dam records an impressive 364 day calving-interval on 11 calves. Top 30% CED, 20% YW, 20% CW, 25% RE, 15% \$F and 25% \$B. Preg checked safe to Vision Maverick 1033 due April 22nd.

Lot 78

**LOT 78 Vision Evergreen 568**

DOB: 9/12/15 • TATT00: 568 • REG. 18657727

Visiontopline Royal Stockman

Vision Unanimous 1418 #

Vision Edella 665 #

S A V 004 Density 4336 #

Vision Evergreen 304

ALC Evergreen C29R #

Gambles Royal Flush

LaGrand Pride 7140

Boyd On Target 1083 #

Vision Edella 337

S A V 8180 Traveler 004 #

S A V May 7238

K C F Bennett Coalition SCC #

Roth Miss Traveler 2095

CED	BW	WW	YW	MILK	CW	MARB	REA	\$M	\$W	\$F	\$G	\$B	\$C
-3	3.9	60	110	18	44	0.42	0.36	50	46	92	37	129	217



An own daughter of the Pathfinder sire Vision Unanimous 1418. Unanimous daughters have been rock-solid females consistently producing more pounds and fleshing ability with exceptional phenotype and disposition. An added bonus – she's an Evergreen that will go the distance for you. Her calves have averaged 83 lbs at birth. Her Pathfinder granddam recorded WR 7@103, YR 6@102, IMF 17@103, RE 17@101 and Fat 17@110. Preg checked safe to Vision Maverick 1033 due April 26th.





Vision Maverick 0033
Service Sire of Lots 79-80

LOT 79 Vision Pride 572

DOB: 10/22/15 • TATT00: 572 • REG. 18654247

Moore 602-Mytty I Focus 708B
Moore 902-Focus 008
Moore Style 708 #

Connealy Consensus 7229 #
SandPoint Pride 1359
SandPoint Pride 4196

Moore Mytty In Focus 422
Moore Sitz Tradition 38
PV Moore Style H49
Moore Sitz Tradition 38

Connealy Consensus #
Blue Lilly of Conanga 16
B/R New Design 036 #
Baldridge Pride L826

CED	BW	WW	YW	MILK	CW	MARB	REA	\$M	\$W	\$F	\$G	\$B	\$C
0	3.7	71	130	34	51	0.46	0.23	42	59	96	41	137	220



A highly productive Moore 902-Focus-008 daughter with a 377 day calving-interval and progeny ratios of BR 5@99, WR 5@101, YR 5@102, IMF 1@161 and Fat 1@121. 36 daughters of Moore 902-Focus 008 collectively record an impressive 103 weaning ratio on 113 calves. Her Atlantis son sells as Lot 42 and her Pathfinder daughter produced Lot 21. Top 15% WW, 10% YW, 20% SC, 10% Milk, 10% Doc, 10% Claw, 3% Angle, 25% CW and 30% \$F. Preg checked safe to Vision Maverick 0033 due April 16th.

Lot 80**LOT 80 Vision Black Oak 663**

DOB: 4/12/16 • TATT00: 663 • REG. 18654523

G A R Grid Maker #
S A V Bismarck 5682 #
S A V Abigale 0451

Mytty In Focus #
Vision Black Oak 711 #
Vision Black Oak 320

G D A R Traveler 044 #
G A R Precision 2536
Schoenes Fix It 826 #
S A V Abigale 6062

S A F Focus of E R #
Mytty Countess 906
G A R Grid Maker #
Vision Black Oak 9009

CED	BW	WW	YW	MILK	CW	MARB	REA	\$M	\$W	\$F	\$G	\$B	\$C
11	0.1	49	78	10	14	0.67	0.65	41	37	62	54	116	191



An old school pedigree fortified by eight Pathfinders. She offers predictable low birth genetics recording a progeny BR of 4@97 and average birth weight of 77 lbs. Top 15% CED, 25% BW, 1% CEM and 30% \$G. Preg checked safe to Vision Maverick 0033 due April 28th.

Lot 81**LOT 81 Vision Edella 671**

DOB: 9/18/16 • TATT00: 671 • REG. 19003728

S A V Pioneer 7301 #
S A V Platinum 0010 #
S A V Greystone Jannet 5345 #

Boyd On Target 1083 #
Vision Edella 665 #
Vision Edella 337

S A V Final Answer 0035 #
S A V Blackbird 5297
S A V 8180 Traveler 004 #
S A V Jannet 7059

S A F 598 Bando 5175 #
Boyd Forever Lady 7095
SydGen On The Mark
Vision Edella 1045

CED	BW	WW	YW	MILK	CW	MARB	REA	\$M	\$W	\$F	\$G	\$B	\$C
1	2.5	60	101	24	46	0.41	0.25	59	56	94	28	121	216



A maternal sister to the Pathfinder sire Vision Unanimous 1418. Her extra fleshing ability, mass and dimension will enable her to thrive in many environments. Her Pathfinder dam earned a progeny record of BR 6@97, WR 6@102, YR 5@103, IMF 7@107 and Fat 7@105. Preg checked safe to Vision Maverick 1033 due April 1st.

Vision Angus

Thank You!

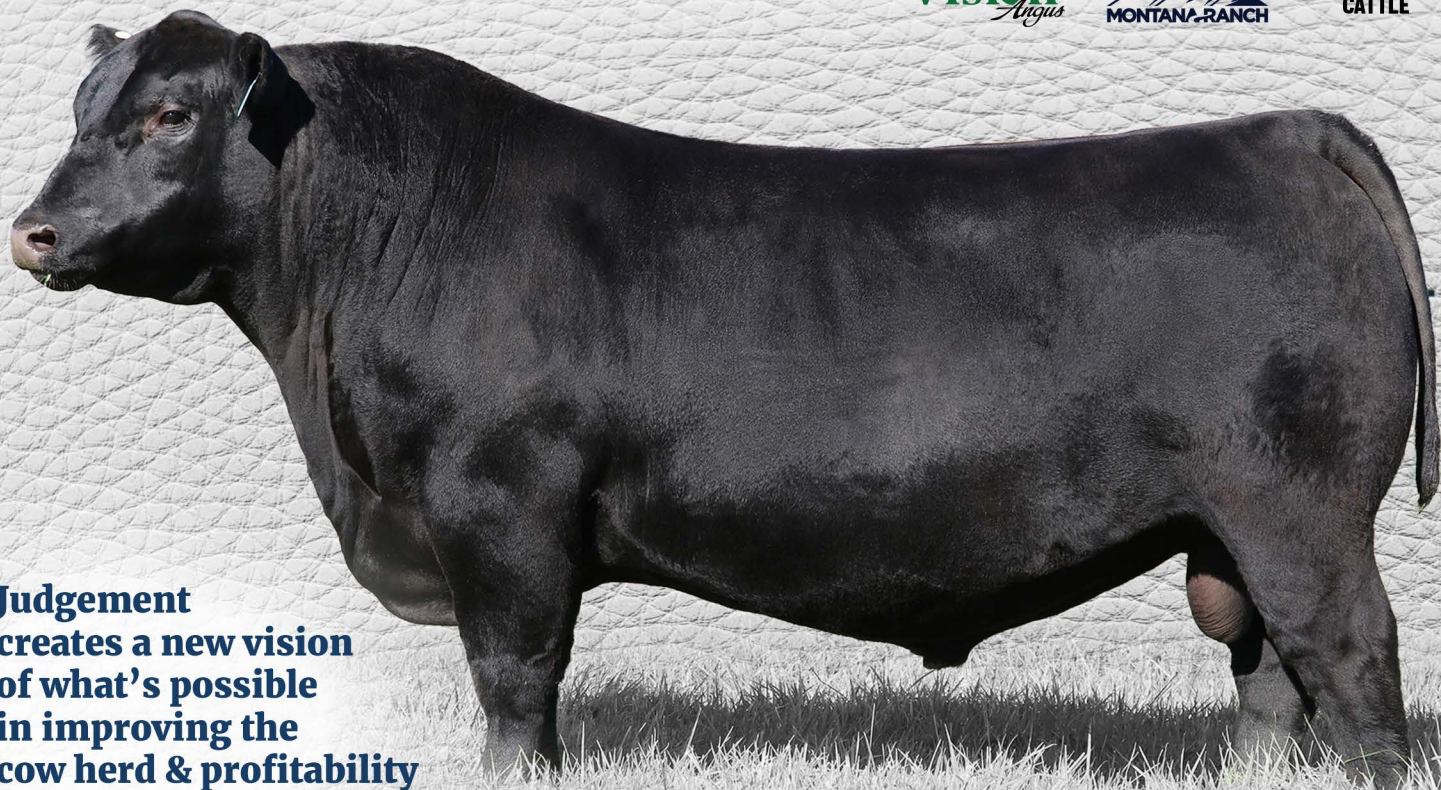
FOR YOUR ATTENDANCE & CONSIDERATION!
YOUR SATISFACTION IS GUARANTEED!

MONTANA JUDGEMENT 1038

Vision
Angus

MONTANA-RANCH

LONKER-ANGELL
CATTLE



**Judgement
creates a new vision
of what's possible
in improving the
cow herd & profitability
for cattlemen.**

MONTANA JUDGEMENT 1038

DOB: 2/14/2021 • TATTOO: 1038 • REG. 20193391

S A V Rainfall 6846
Square B Atlantis 8060
Elbanna of Conanga 1209
Connealy Final Product
Mill Brae FP Joanie 3063
Mill Brae FA Joanie 9263

Coleman Charlo 0256
S A V Blackcap May 4136
Connealy Consensus
Elbasta of Conanga 9703
Connealy Product 568
Ebonista of Conanga 471
S A V Final Answer 0035
Mill Brae Joanie Ferd 903

CED	BW	WW	YW	MILK	SC	DOC	HP	CW	MARB	RE	\$M	\$W	\$F	\$G	\$B	\$C
1	3.5	76	127	25	1.35	12	14.8	39	.64	.88	82	70	83	52	136	258



Montana Joanie 1037
The \$70,000 full sister
to Judgement



Mill Brae Joanie 3063
The Pathfinder Dam
of Judgement

Evaluated as one of the most complete, fault-free bulls in the breed today. Judgement is a revolutionary sire for type, maternal excellence, feed efficiency, fertility and cow longevity. He excels for growth relative to mature size, and gain relative to consumption.

The earliest calves from Judgement are long-spined with outstanding early growth, muscle expression, stunning presence and are earning rave reviews from breeders across the country.

At Vision Angus the Judgement calves are being born with impressive calf vigor and ideal new born shape with no dystocia. As they age, they have the look of stout, good lookin' and fast-growing cattle.



Look for Judgement progeny to highlight the March 3, 2025 Vision Angus Sale!

"The work of breeding animals is a work for a long time, requiring pluck, patience, a high degree of intelligence and a close practical judgement." WD Hoard, 1885





Vision *Angus*



GOD HAS A **VISION** FAR GREATER THAN MY SIGHT

Vision *Angus*

BRENT, TINA, AUSTIN & ALEX VIESELMAYER
36996 COUNTY ROAD 53
AMHERST, COLORADO 80721

FIRST CLASS MAIL • DO NOT DELAY

CHECK ONLINE FOR SALE UPDATES!

WWW.VISIONANGUS.COM | WWW.FACEBOOK.COM/VISIONANGUS

These Lots All Sell
MONDAY, MARCH 4TH



THE SHOWTIMES DESIGN
THESHOWTIMESMAGAZINE.COM